

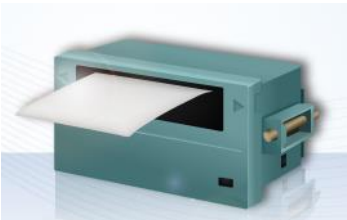


23. HMI Supported Printers

This chapter describes the printers supported by HMI and the setup steps.

23.1. The Supported Printer Types	23-2
23.2. Steps to Add a New Printer and Start Printing	23-5
23.3. The Supported Printer Types on cMT3151	23-7

23.1. The Supported Printer Types

HMI supported printer drivers include the following types:

Printer type	Description
<ul style="list-style-type: none"> <li data-bbox="172 495 400 524">● SP-M, D, E, F 	<p data-bbox="722 495 1366 667">Serial printers, please configure communication parameters to match the printer. [Pixels of width] must be correctly set and can't exceed printer default setting:</p> <p data-bbox="722 685 1166 719">100 pixels for 1610 series printers.</p> <p data-bbox="722 734 1246 768">220 pixels for 2407, 4004 series printers.</p> <p data-bbox="722 784 1315 853">The driver uses EPSON ESC Protocol for Serial Micro Printer.</p>
<ul style="list-style-type: none"> <li data-bbox="172 875 517 904">● EPSON ESC/P2 Series 	<p data-bbox="722 875 1345 958">Serial printers, please configure communication parameters to match the printer.</p> <p data-bbox="722 974 1286 1008">The ESPON ESC/P2 printer protocol is used.</p> <p data-bbox="722 1023 1286 1106">Impact Printer: LQ-300, LQ-300+, LQ-300K+ (RS-232), LQ-300+II (RS-232)</p> <p data-bbox="722 1122 1126 1155">Inkjet Printer: Stylus Photo 750</p> <p data-bbox="722 1171 1023 1205">Laser Printer: EPL-5800</p>
<ul style="list-style-type: none"> <li data-bbox="172 1261 496 1290">● HP PCL Series (USB) 	<p data-bbox="722 1261 1390 1344">HP compatible USB printers that support HP PCL5 protocol or PostScript3 Printer Control Language.</p> <p data-bbox="722 1359 1390 1485">The printers that support PCL5 or later versions will support PCL5 protocol due to the downward compatibility of PCL.</p>

- **Axiohm A630**



Micro printer from France connects via serial port; please configure communication parameters to match the printer.

- **SPRT**



Serial printers, please configure communication parameters to match the printer. [Pixels of width] must be correctly set and can't exceed printer default setting "100".

- **EPSON TM-L90**



Serial printers, please configure communication parameters to match the printer. [Pixels of width] must be correctly set and can't exceed printer default setting "576".

- **EPSON TM-T70**



Serial printers, please configure communication parameters to match the printer. [Pixels of width] must be correctly set and can't exceed printer default setting "576".

The paper cutting mode can be selected: [No cut] / [Partial cut].

- **BRIGHTTEK WH-A19**



Supported models: A92R10-00E72A

72 in model number represents hexadecimal printer, and A represents wide voltage 5~9V. This is the same as the A6 16 impact printer.

- **BRIGHTTEK WH-E19**



Serial printers, please configure the same communication parameters as the printer.

- **BRIGHTTEK WH-E22**



Supported models:

E22R10-00E725: Same as A7 16 impact printer.

A7 represents A72R90-31E72A.

E221R90-00E11740GA: Serial printer, connects through RS-485 port, please use a RS232-to-RS485 converter.

- **BRIGHTTEK WH-C1/C2**



Serial printers, please configure communication parameters to match the printer. The paper cutting mode can be selected: [No cut] / [Half cut] / Full cut].

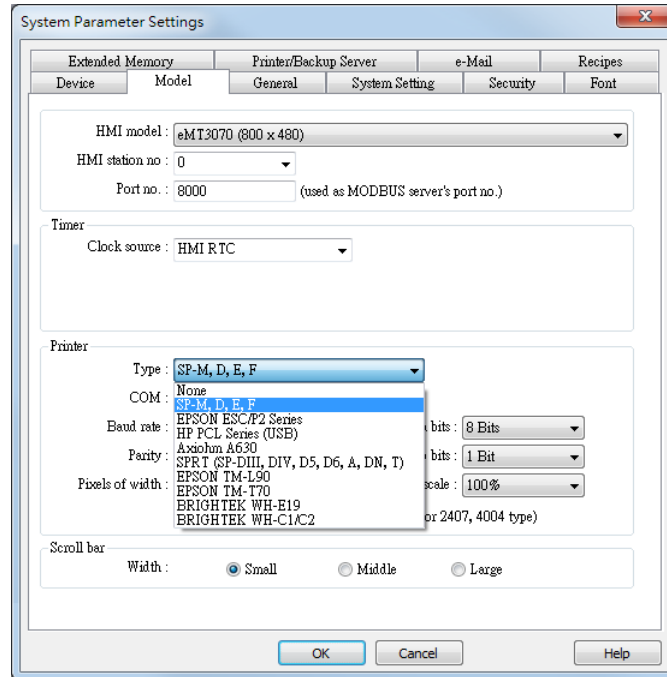
- **Remote Printer Server**



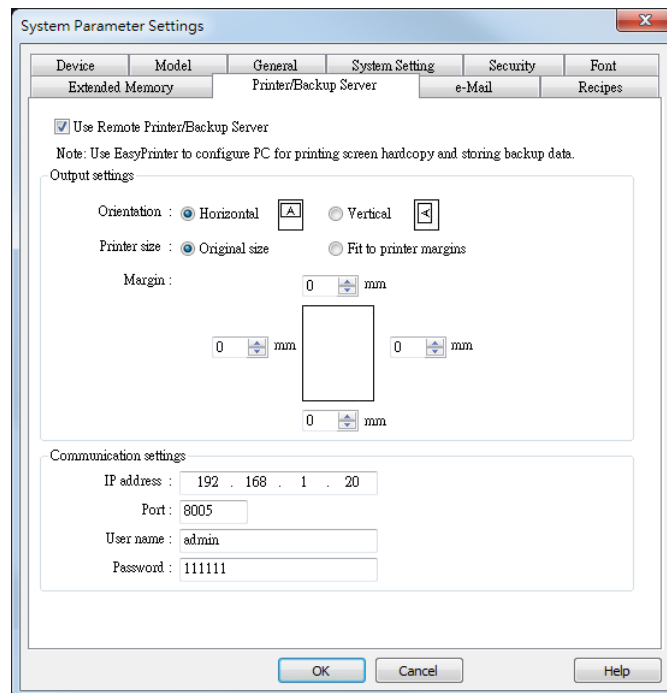
Use EasyPrinter to start printing by the printers connected with PC via Ethernet. This works under MS Windows so most printers on the market are supported.

23.2. Steps to Add a New Printer and Start Printing

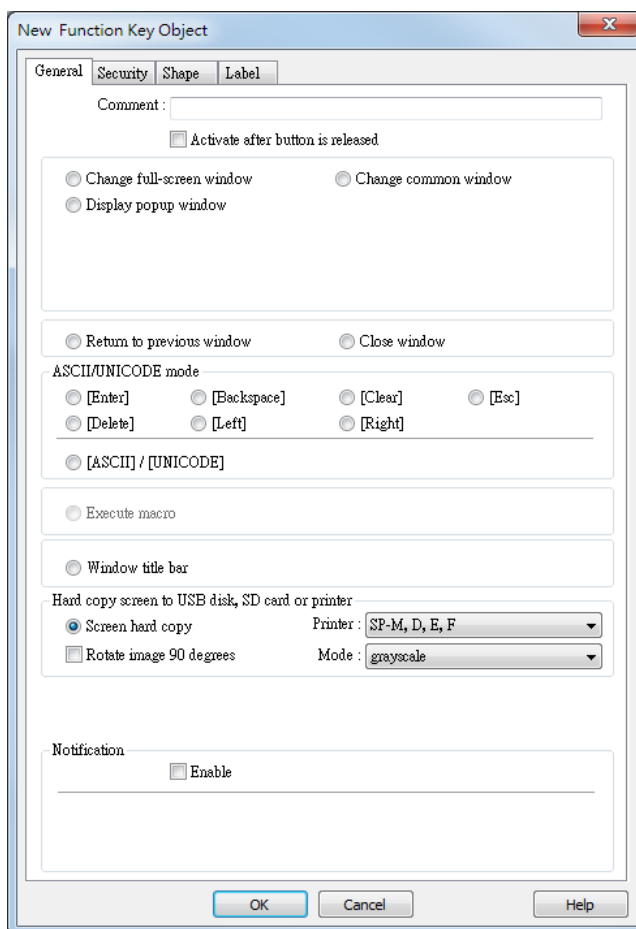
1. Add printer type.
 - In [System Parameter Settings] » [Model] select the printer type and set the relevant parameters.



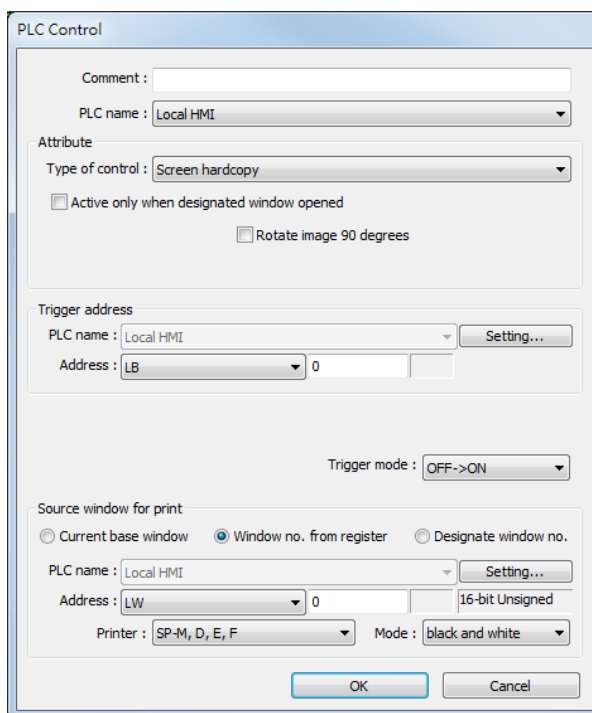
- To connect Remote Printer Server, set the parameters in [System Parameter Settings] » [Printer/Backup Server].



- 2. Start printing.
 - Start printing with Function Key.

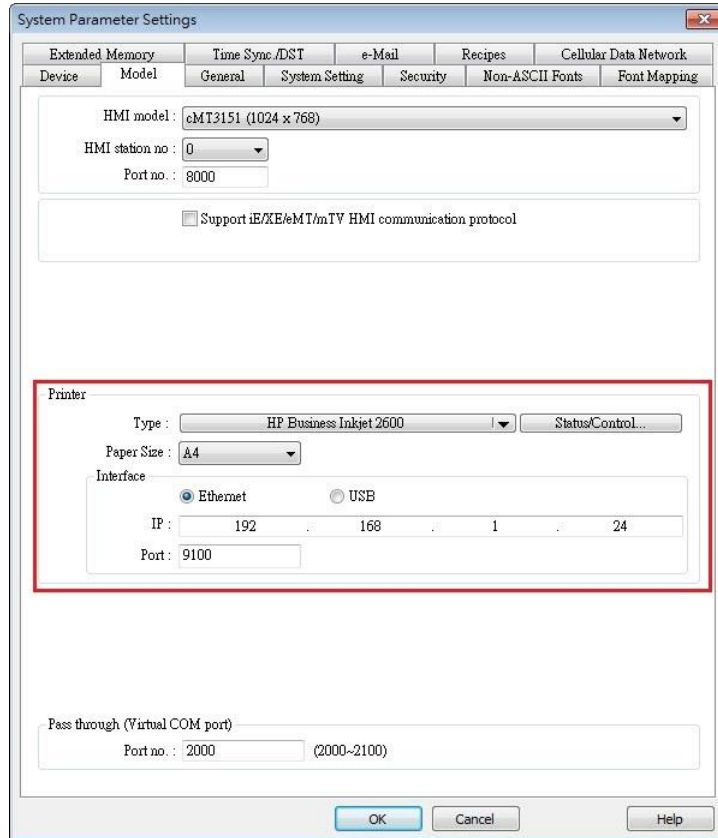


- Or, use PLC Control [Screen hardcopy] to start printing with a designated bit address.

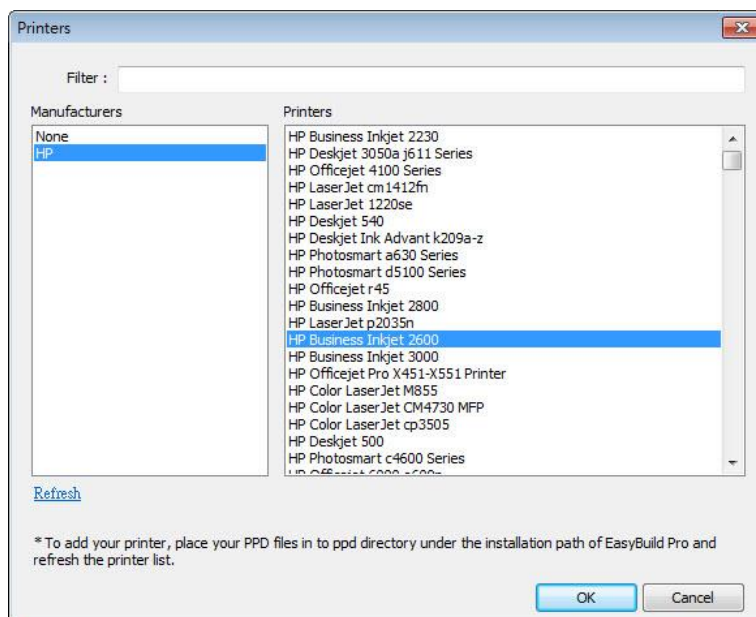


23.3. The Supported Printer Types on cMT3151

To connect cMT3151 with a printer, go to System Parameter Settings » Model tab.



1. Select a printer type. To add a new printer, place the printer's PPD file in the ppd folder under EasyBuilder Pro installation directory, and then click [Refresh].



2. Use Status Address to monitor printer status, and use Control Address to dynamically update connection parameters.

Status/Control

Status address

Enable

PLC : Local HMI [Settings...]

Address : LW 0

Status : LW-0
(0 : not ready, 1 : initializing, 2 : ready, 3 : printing)

Error : LW-0 + 1
(0 : none, 1 : no device, 2 : unknown error)

Control address

Enable

PLC : Local HMI [Settings...]

Address : LW 10

Command : LW-0
(0 : none, 1 : update)

Interface : LW-0 + 1
(0 : Ethernet, 1 : USB)

IP : LW-0 + 2 (4 words)

Port : LW-0 + 6

OK Cancel