

Software Version : EasyBuilder Pro V6.06.01.631

Corrections

The following issues were addressed in this release:

1. Unstable communication with a device may cause its related MQTT topic subscriptions to terminate.
2. For local HMI's data security settings, max. value of greater than 65535 is ineffective.

Communication and Drivers

1. **[ABB AC500]**
Added MW_Bit address type.
2. **[CODESYS V3 (Ethernet)]**
Fixed an issue where data cannot be written to WSTRING address type.
3. **[Siemens S7-1200/S7-1500 Absolute Addressing (Ethernet)]**
Fixed an issue where tags cannot be correctly selected if the imported TIA project file (*.ap##) contains multiple devices.
4. **[Atlas Copco Torque Tool Open Protocol (Ethernet)]**
Added Ex Monitored Inputs address type.

Software Version : EasyBuilder Pro V6.06.01.610

Corrections

The following issue in V6.06.01.607 was addressed in this release:

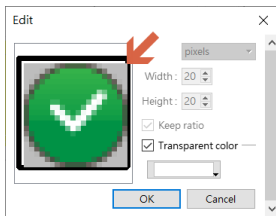
1. Customized file handling setting of Trend Display cannot be saved.

Software Version : EasyBuilder Pro V6.06.01.607

Corrections

The following issues were addressed in this release:

1. The count parameter for statistics related macro functions (AVERAGE, MAX, MIN...etc) cannot be greater than 263.
2. Scientific notation with negative exponent cannot be used in macro.
3. In picture library setting, slight color deviation may be observed in the preview image within the edit window.



4. ID:1 error may occur on selected devices.
5. In [JS object], using canvas transform yields unexpected results.
6. In [Numeric] and [ASCII], using particular text alignment or position settings can stretch the touchable area beyond the object's bounds.

Communication and Drivers

1. **[Siemens S7-1200/S7-1500 Absolute Addressing (Ethernet)]**
Added support for 64-bit addresses: IL, QL, ML.
2. **[KEYENCE KV-8000 (Symbolic) (Ethernet)]**
Fixed the issue where bit array data is not correctly displayed.
3. **[Schneider SoMachine M Series (Ethernet)]**
[CODESYS V3 (Ethernet)]
Added support for data types: LTIME, DATE, TIME_OF_DAY (TOD), DATE_AND_TIME (DT)

Software Version : EasyBuilder Pro V6.06.01.583

Corrections

The following issues were addressed in this release:

1. Importing Excel file data to the Label Tag Library yields incorrect result.
2. 2D Barcode Display object cannot be created after editing of any Weincloud or Push Notification Barcode Display object.
3. ID:4 error may occur on selected devices.
4. Projects in which KEYENCE KV-8000(Symbolic) driver is used cannot be opened.

Communication and Drivers

1. **[OMRON EtherNet/IP NJ/NX Series]**
Fixed the issue where HMI-device communication does not resume after online editing.
2. **[Free Protocol]**
Added support for pass-through.
3. **[Rockwell CompactLogix – Free Tag Names]**
Increased the allowed length of tag names to 256.

Software Version : EasyBuilder Pro V6.06.01.563

Corrections

The following issues were addressed in this release:

1. When Data Sampling saves to HMI memory until space full in Customized File Handling mode, it incorrectly saves to system reserved memory when storage space is insufficient. Following the correction, data sampling will stop in such a case.
2. Macro's Round() function does not work properly on non-cMT models such as iE, eMT series.
3. Data for an hour may be missing when reading a db file using EasyConverter.
4. The system register LB-11958 is not triggered when time settings are incorrect.
5. The system keyboard setting of a Numerical Input object cannot be saved without at least a custom keyboard set up.
6. Negative numbers cannot be entered in Numerical Input when data format is Signed and the dynamic lower limit is not defined.
7. History Data Display's Watch settings cannot be saved.

Communication and Drivers

1. **[Siemens S7-1200/S7-1500 Absolute Addressing (Ethernet)]**
Fixed errors that occur when reading consecutive string data.
2. **[CODESYS V3 (Ethernet)]**
Fixed communication issues for iE, eMT (non-cMT) models.
3. **[FATEK FB/FBs/B1/B1z Series]**
Added address types: WX_16BIT, WY_16BIT, WM_16BIT, WS_16BIT
4. **[KEYENCE KV-8000 (Symbolic) (Ethernet)]**
Fixed communication issues with tags that are mapped to W, DM (DD.ddd format) addresses.
5. **[DELTA AS300/DVP-ES3 MODBUS RTU/ASCII] [DELTA AS300/DVP-ES3 MODBUS TCP/IP]**
These drivers now support DVP-ES3 and are renamed accordingly. Also added addresses: X(Oct), Y(Oct), X_Bit(Oct), Y_Bit(Oct).

Software Version : EasyBuilder Pro V6.06.01.503

Notice

For MT6051iP, MT6071iE or MT6102iQ (which have already been discontinued) that is running a project with an incorrect model, communication issues may occur after an extended period of time. Note that the listed products have been discontinued.

For those affected, please change to the correct model in the project and then download the project again, or update to EasyBuilder Pro V6.06.01.503 and then download the project again to resolve this issue.

New Supported Model

cMT1106X

Corrections

1. Fixed an issue where under certain circumstances, system registers related to communication status give incorrect values.
2. Fixed an issue where it is not possible to navigate to the page which has an Event Display object whose Include categories setting is set to Dynamic Range.
3. Fixed an issue where index registers used in Combo Buttons may be ineffective.

Drivers

1. **[MODBUS TCP/IP]** Added addresses: VendorName, ProductCode, MajorMinorRevision.
2. **[Schneider M340/M580 series (Symbolic Addressing) (Ethernet)]** Added support for String with user-defined length and Derived Data Type.
3. **[Rockwell PLC]** Fixed tag import issues.

Software Version : EasyBuilder Pro V6.06.01.461

Corrections

1. Fixed an issue where events set to Emergency priority level may not all be properly triggered.

Drivers

1. **[Cimon CM1-SC01A]** Added address types (Z, D_Bit, T_Dec, C_Dec) and expanded address range (M, K, L, D, TS, TC, CS).
2. **[Rockwell DF1][Rockwell DF1 (BCC)][Rockwell DH485]** Added support for tag import.

Software Version : EasyBuilder Pro V6.06.01.446

Corrections

1. [cMT] Fixed an issue where login with USB Security Key may not be possible.
2. Fixed an issue where the certificate for MQTT cannot be imported.
3. Fixed an issue where Greek characters do not display with the correct font.
4. [cMT] Fixed an issue where in Dynamic Drawing, a border with incorrect color is drawn when drawing a filled shape.
5. Fixed issues related to text alignment settings.
6. Optimized certain behaviors of PDF Reader.
7. Fixed an issue where max. read / write command size settings of device are not correctly saved.

Drivers

1. Expanded address range of LS Series drivers:
[LS XEC/XGI CPU DIRECT] [LS XGI Cnet]: MW, WW, FW, MD
[LS XGI FEnet (Ethernet)]: WW
[LS XBM/XBC/XGK CPU DIRECT]: PW, MW, FW, TW,CW, SW, DW, UW, ZW
2. *[IDEC Microsmart FC6A Series]* Fixed tag import issues.
3. *[BACnet IP]* Fixed tag import issues.
4. *[CODESYS V3 (Ethernet)]* Fixed an issue where array data cannot be properly written to device using macro.

Software Version : EasyBuilder Pro V6.06.01.400

New Features

1. Added support for custom resolution up to 1920×1200 for cMT-FHDX-220.

Corrections

1. Fixed an issue where the states of Multi-State Switches are displayed incorrectly.
2. Fixed an issue where the original password cannot be used after decompilation.
3. Fixed an issue where under certain circumstances, a record may be occasionally missing when OPC UA Server reads device value.

Drivers

1. **[KEYENCE KV8000 (Symbolic) (Ethernet)]** Optimized communication.
2. **[OPC UA Client]** Fixed an issue where certain tags cannot be used in objects even after successfully imported.

Software Version : EasyBuilder Pro V6.06.01.383

New Features

Added support for Weincloud Dashboard. 

Corrections

1. Fixed an issue where multi-lined text is not displayed in the specified color in an ASCII object.
2. Fixed an issue where VNC Viewer does not properly display screens with certain resolutions.
3. Fixed an issue where LB-9060 (password error bit) may sometimes be triggered by mistake when using General security mode on a cMT model.
4. Fixed an issue where data may be missing because EasyConverter is not aware of the Daylight Saving Time setting on the host computer.
5. Fixed an issue where the alignment settings of the labels in objects may be incorrect after decompilation.
6. Fixed an issue where opening certain files may take a while.

Drivers

1. **[OMRON EtherNet/IP (NJ/NX Series)]** Fixed an issue where tags that contain uppercase letters cannot be read.
2. **[OPC UA Client]** Fixed an issue where data may not be correctly recorded when used with Data Sampling.
3. **[Rockwell EtherNet/IP (CompactLogix)]** Fixed compatibility issue with older CPU platforms.
4. **[Inovance H5U Series (Ethernet)]** Added new driver.

Software Version: EasyBuilder Pro V6.06.01.332

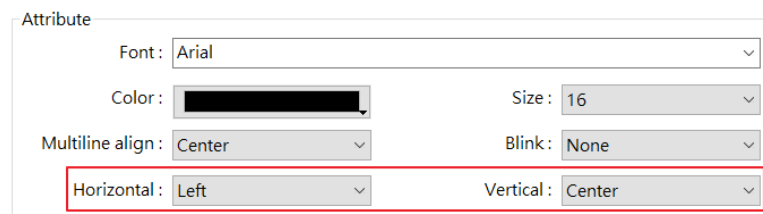
New Supported Models

MT8071iP2

New Features

EasyBuilder Pro

Feature	Description
1. [Find Overlapping Objects]	Added this tool to help find the overlapping objects in a project.
2. [Convert to Combo Button]	Added this tool to help convert multiple objects into a single Combo Button.
3. [Copy Formatting]	Added this tool to help copy the text formatting from one object and apply it to another one.
4. [Label]	Added support for vertical / horizontal alignment of text relative to the object and also added Vertical Alignment button in the ribbon menu. (The multiline align setting has been renamed as such.)



Vertical/Horizontal alignment of text label

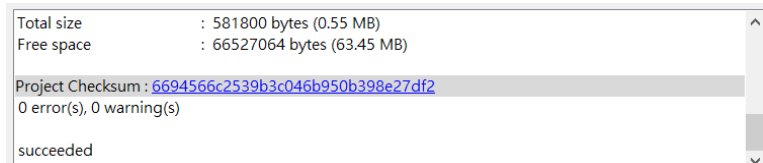
5. [Window Copy]	When performing window copy, underlay windows will be copied along with the target window.
------------------	--

cMT / cMT X Series

Feature additions listed in this section are available for cMT / cMT X series models that support the said features.

Feature	Description
1. [OPC UA Server]	Added reverse high/low byte setting for string tags.
2. [Database Server]	Added support for connection with Azure SQL Database.

- | | |
|---------------------------------------|--|
| 3. [Data Sampling] | Added an option in Customized File Handling. When the file creation mode is Trigger mode, this option can be selected so that, following HMI reboot, data will be written to a new file only after the designated register has been triggered. |
| 4. [Numeric] | Allowed Float and Double data types to use customized display format. |
| 5. [PLC Web Browser] | Added support for Status and Error Code control addresses. |
| 6. [Alarm Display]
[Event Display] | Added support for displaying column headers. |
| 7. [Numeric] | Added support for dynamic low/high limit settings using non-consecutive addresses. |
| 8. [MQTT] | In value-trigger-based mode, added [Included in all messages sent] option in MQTT Publisher's Address settings. Meanwhile, added [Required for all incoming messages] option in MQTT Subscriber's Address settings. |
| 9. [System Registers] | Added WiFi hotspot related system registers. |
| 10. [Control Token] | Added support for manual control token acquisition. The control token can be acquired or unacquired by using an Action Trigger object. |
| 11. [Project] | Added support for project checksum to ensure project integrity. It can be found during compilation, uploading / downloading of project, or in the corresponding system registers. |



```
Total size      : 581800 bytes (0.55 MB)
Free space     : 66527064 bytes (63.45 MB)
Project Checksum : 6694566c2539b3c046b950b398e27df2
0 error(s), 0 warning(s)
succeeded
```

Project checksum displayed at compilation

- | | |
|--------------|---|
| 12. [Others] | Added support for Cyrillic keyboard layout. |
|--------------|---|

All features listed in this section are added on cMT / cMT X series for compatibility with the behavior of legacy models.

Feature	Description
1. [Backup] [Screen Hardcopy]	Added support for output to FTP.
2. [Trend Display] [History Data Display] [Event Display]	Added support for history control addresses.
3. [Trend Display]	Added support for dynamic X-axis time range control.
4. [Event Log]	Provided an option to record dynamic String ID when using a string table.

Drivers

1. [LEADSHINE mPLC2 Modbus RTU,TCP/IP] Added new driver.
2. [YOKOGAWA FA-M3] Added address types: TP, TU, CU.
3. [YASKAWA MP2300Siec (Ethernet)] Added Electronic Key option.
4. [CAN Bus CANopen Slave] Added NMT START Command control address.
5. [Siemens S7-300 MPI][Siemens S7-300/ET200S (Ethernet)] Added address types: T, C.
6. [Beckhoff TwinCAT PLC – Free Tag Names (Ethernet)] Added support for import (tpy) and use of tags in their hierarchical form.
7. [KEYENCE KV-8000 (Symbolic) (Ethernet)] Added support for the use of Function Block addresses.
8. [ODVA EtherNet/IP (Explicit Messaging)] Added support for binary access to array addresses.