

## Software Version : EasyBuilder Pro V6.09.02.338

### *Resolved Issues*

1. The precision limitation of the Float data type used for the preset data range of the Recipe Database may prevent the input of upper and lower limit values.
2. The keyboard input may not function properly in VNC Viewer under certain circumstances.

### *Communication and Drivers*

1. **[Brother Speedio (Ethernet)]**  
Fixed data reading issues.
2. **[CODESYS V3 (Ethernet)]**  
Fixed an issue where the WSTRING data type cannot be used.
3. **[OPC UA Client]**  
Added functionality to change the connected OPC UA Server via system registers.
4. **[Siemens S7-1200/S7-1500 (Absolute Addressing) (Ethernet)]**  
Fixed the issue with tag import from TIA Portal V19 files.

## Software Version : EasyBuilder Pro V6.09.02.315

### *New Features*

1. **cMT2058XH:** Added support for Media Player, USB Camera, and IP Camera.

### *Resolved Issues*

1. Fixed the delay issue that occurs when editing specific projects.
2. Fixed the crash issue that occurs when decompiling specific projects.
3. Fixed the issue where the upper and lower limits of the Meter Display object cannot be correctly set under certain circumstances.

## Software Version : EasyBuilder Pro V6.09.02.310

### New Features

#### 1. [System Registers]

Added the following system registers:

LB-12824: Enable/disable VNC/WebView interlock

LW-12831: VNC/WebView interlock timeout (1 to 86400 seconds)

LW-12833: VNC/WebView interlock status bar (0: regular, 1: minimal)

LW-12834: System setting theme (0: light, 1: dark)

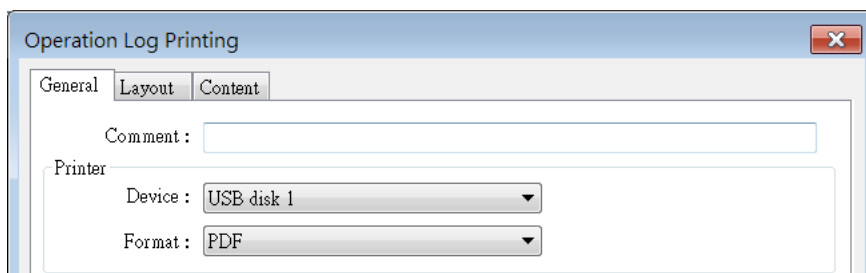
#### 2. [Event Log]

Added an option to mark events triggered prior to shutdown as recovered when starting up.



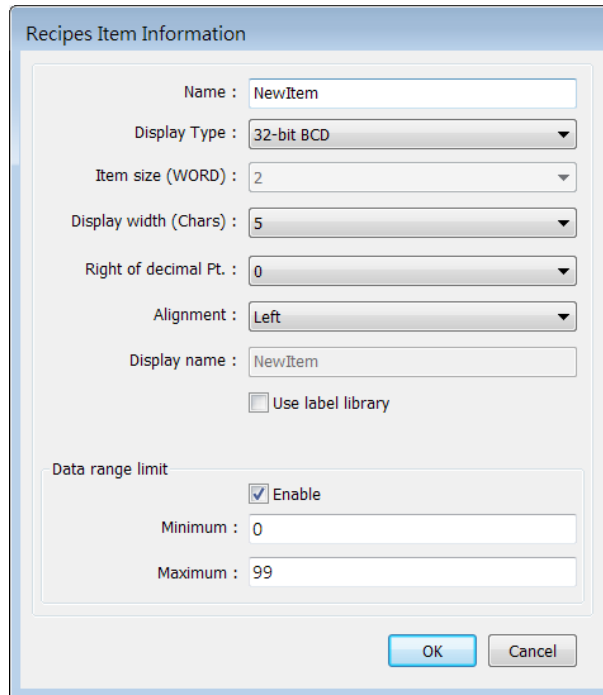
#### 3. [Operation Log Printing]

Added support for output in PDF file format.



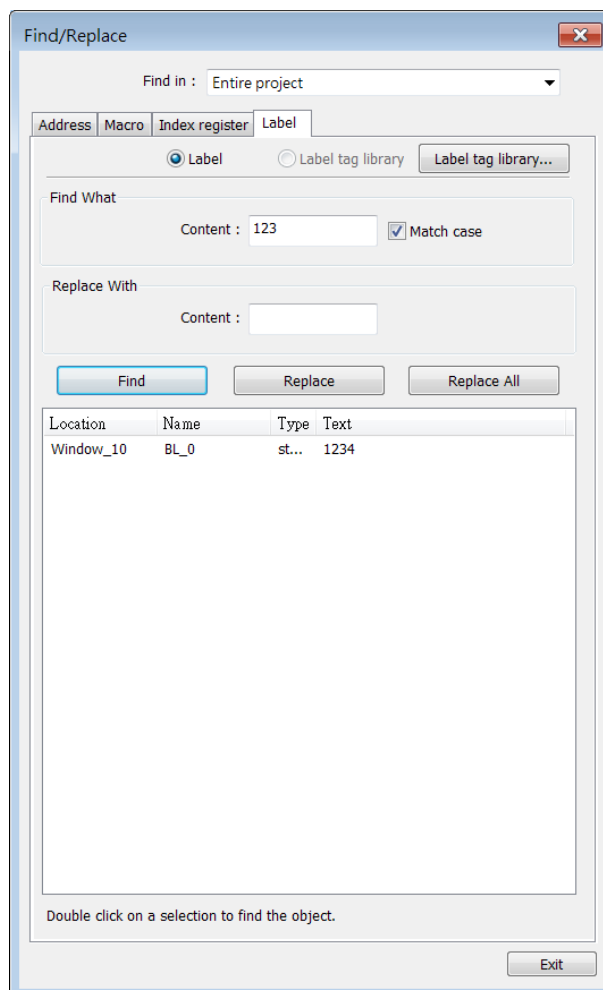
#### 4. [Recipe Database]

Added support for preset data ranges for numeric data types.



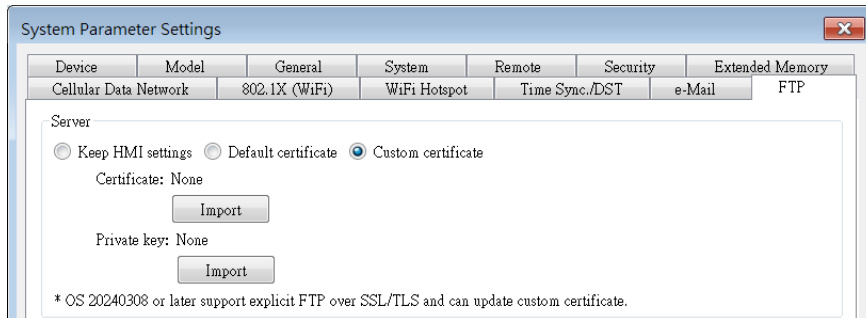
### 5. [Find/Replace]

Added support for quick search and bulk replacement of text labels.



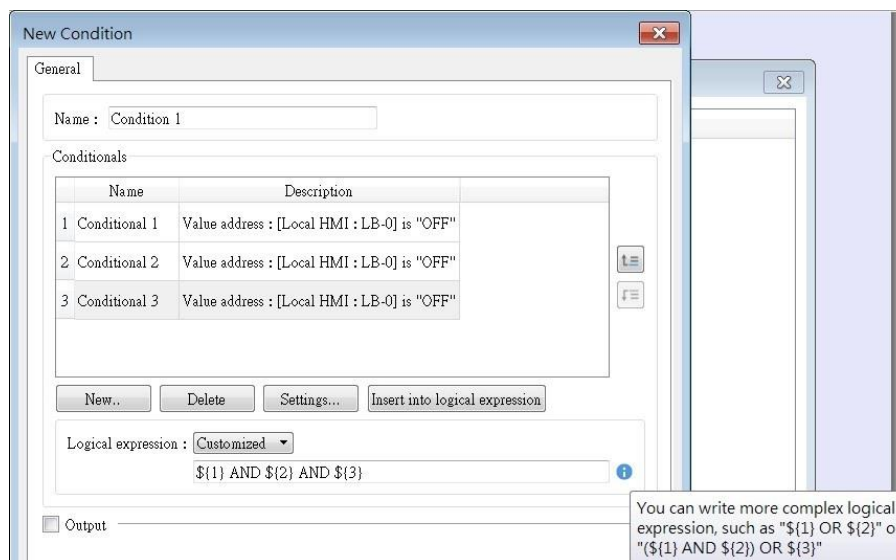
### 6. [FTP Server]

Added support for encrypted communication.



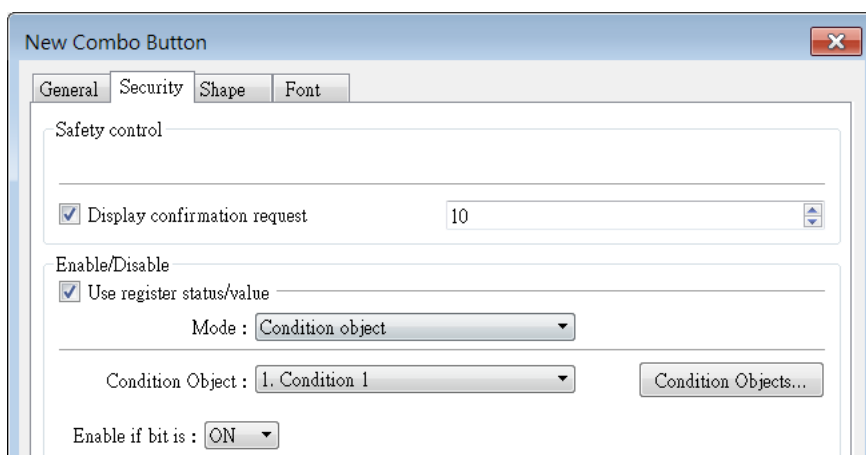
### 7. [Condition]

Added support for customized logical expressions, enabling the setting of more complex trigger conditions.



### 8. [Combo Button], [Direct Window], [Indirect Window], [Numeric], [ASCII]

Added support for using a Condition object as a trigger mode for security functions.



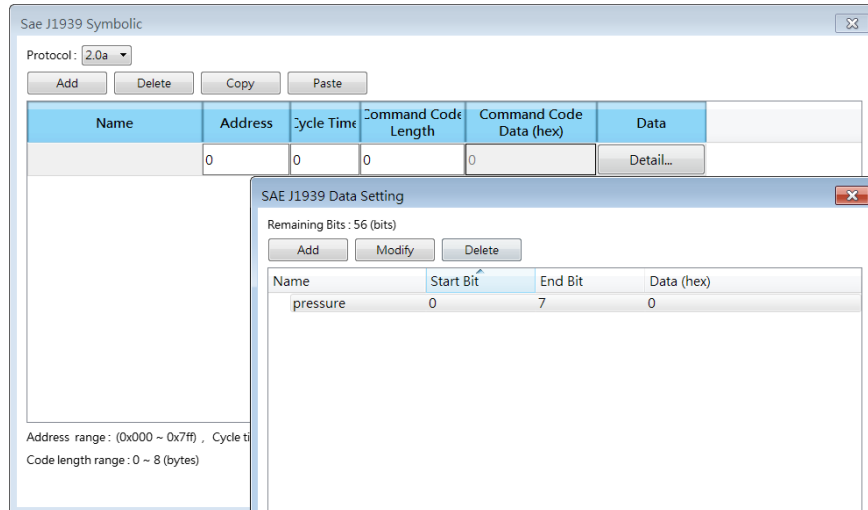
### Communication and Drivers

#### 1. [DELTA DVP 50MC Series (Modbus)(Ethernet)]

Added this driver.

#### 2. [CAN Bus 2.0A/2.0B General and SAE J1939 symbolic]

Updated the Tag Manager interface.



#### 3. [Control Technology 2500 Series (Ethernet)]

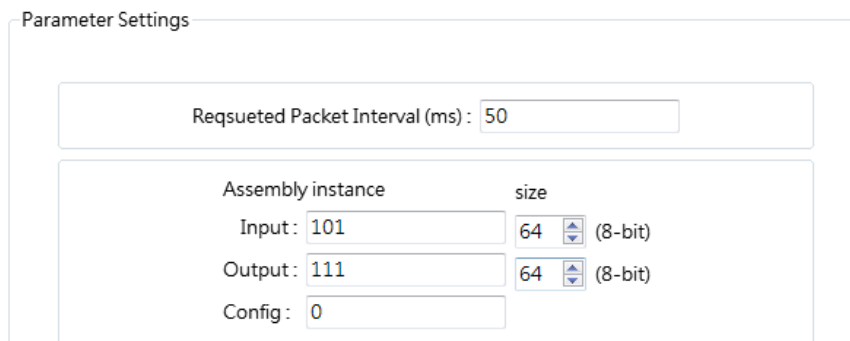
Added support for Alarm Addressing, Loop Addressing, Special Function Programs, Constant, and Drum data types.

#### 4. [DELTA Ethernet/IP (AS Series)]

Optimized communication efficiency.

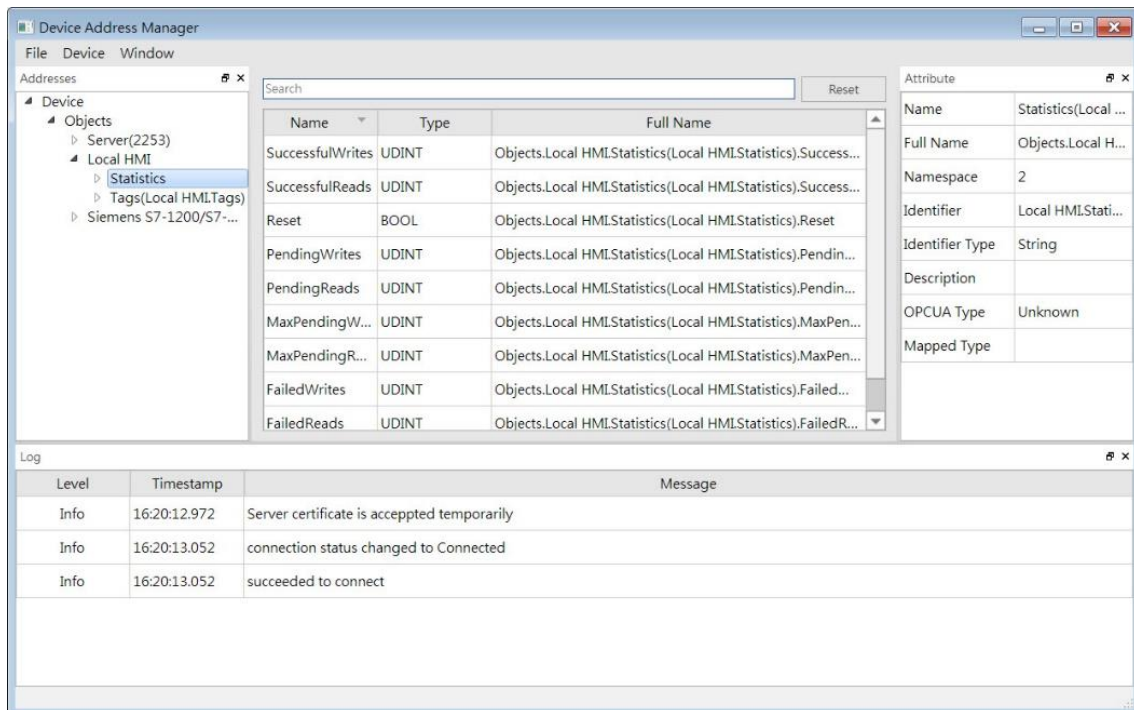
#### 5. [ODVA General EtherNet/IP (Implicit Messaging)]

Added the Configuration setting.

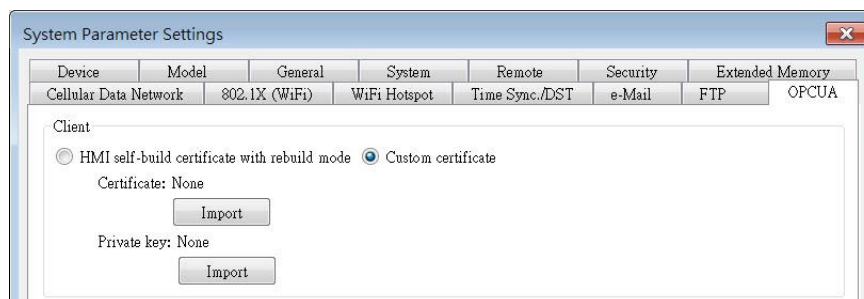


#### 6. [OPC UA Client]

- a. Updated the Tag Manager interface.



- b. Added support for the import of custom certificates.



### 7. [Rockwell CompactLogix - Free Tag Names]

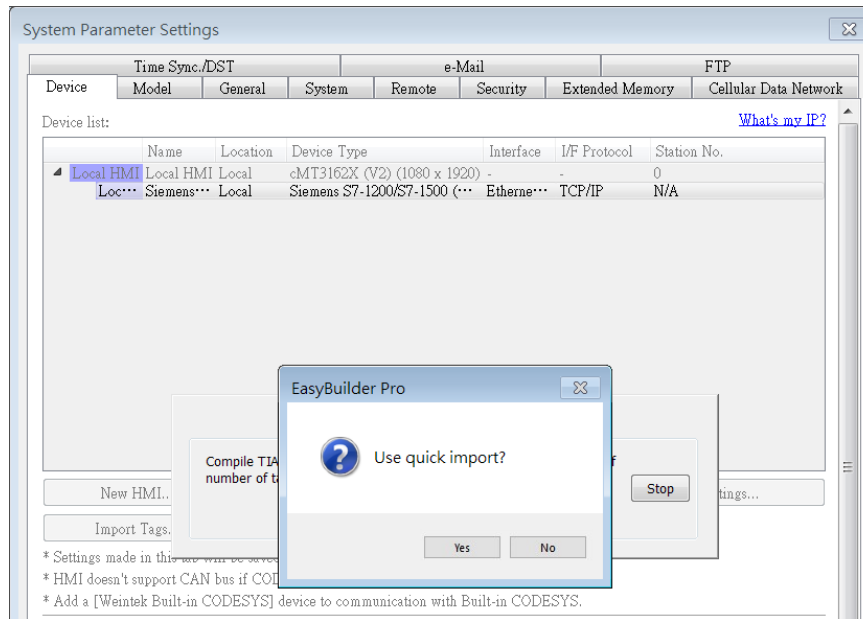
Optimized communication efficiency.

### 8. [Siemens S7-1200/S7-1500 (Absolute Addressing) (Ethernet)]

Added support for the import of S5Time data type.

### 9. [Siemens S7-1200/S7-1500 (S7CommPlus, Symbolic Addressing) (Ethernet)]

Added support for quick tag import.



### 10. [Beckhoff TwinCAT PLC - Free Tag Names (Ethernet)]

[Mitsubishi iQ-R Series - Binary Mode (Symbolic Addressing) (Ethernet)]

[OMRON EtherNet/IP (NJ/NX Series)]

Added support for reading array data that does not start from index 0.