

Q.

How to upload a project file by using a USB drive or an SD card?

This FAQ explains how to upload project files from HMI to PC by using a USB drive or an SD card. Please note that the format of the uploaded project file may differ due to HMI model / OS version. Certain models may not support uploading project files using USB / SD.

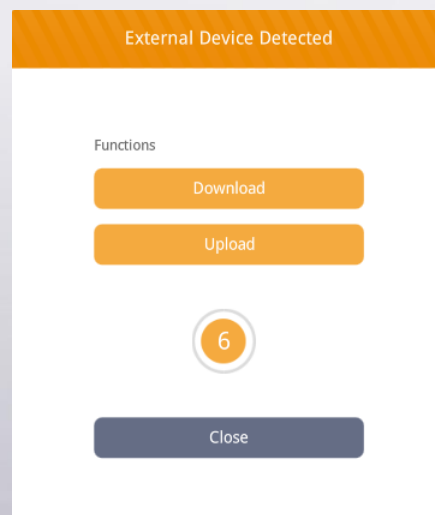
A.

Step 1. After a USB drive or an SD card is inserted into HMI, the following window will be displayed.

eMT, iE, XE, mTV Series

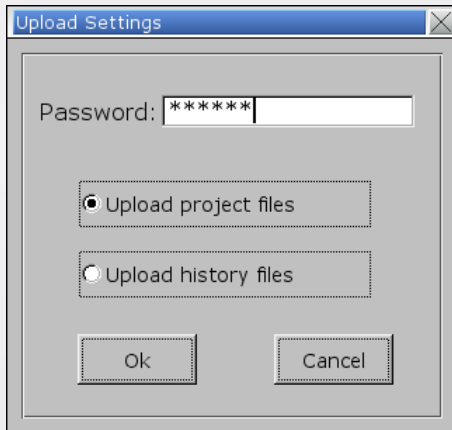


cMT, cMT X Series

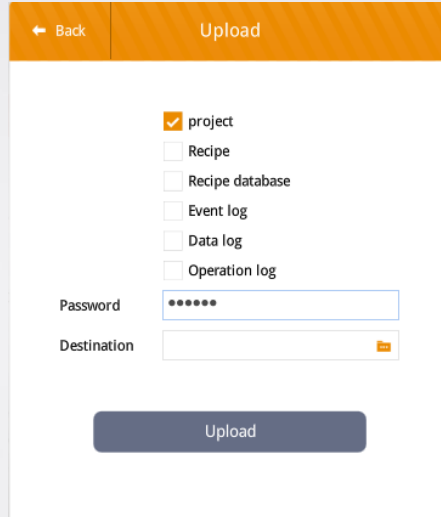


Step 2. Tap [Upload] and enter HMI upload password.

eMT, iE, XE, mTV Series

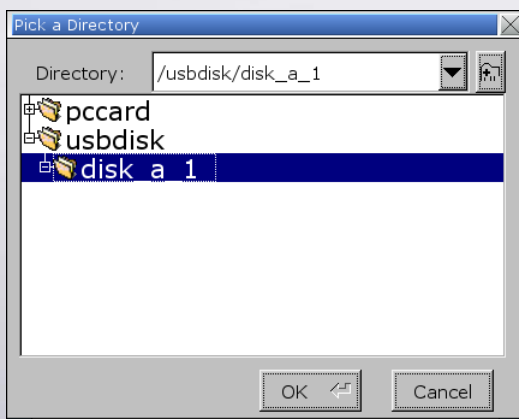


cMT, cMT X Series

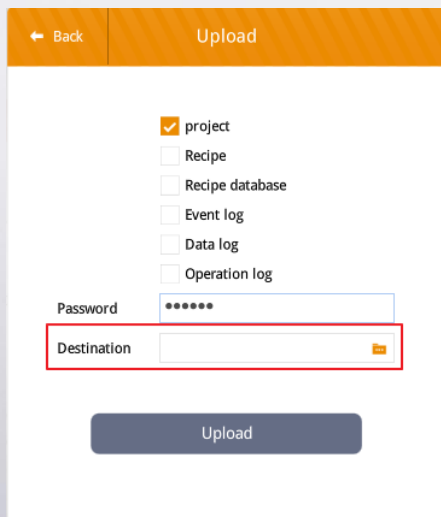


Step 3. Browse for the directory to save the project file and then tap [OK] / [Upload].

eMT, iE, XE, mTV Series



cMT, cMT X Series

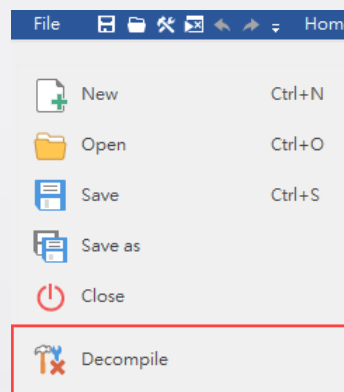


Step 4. Insert the USB drive or SD card into PC.

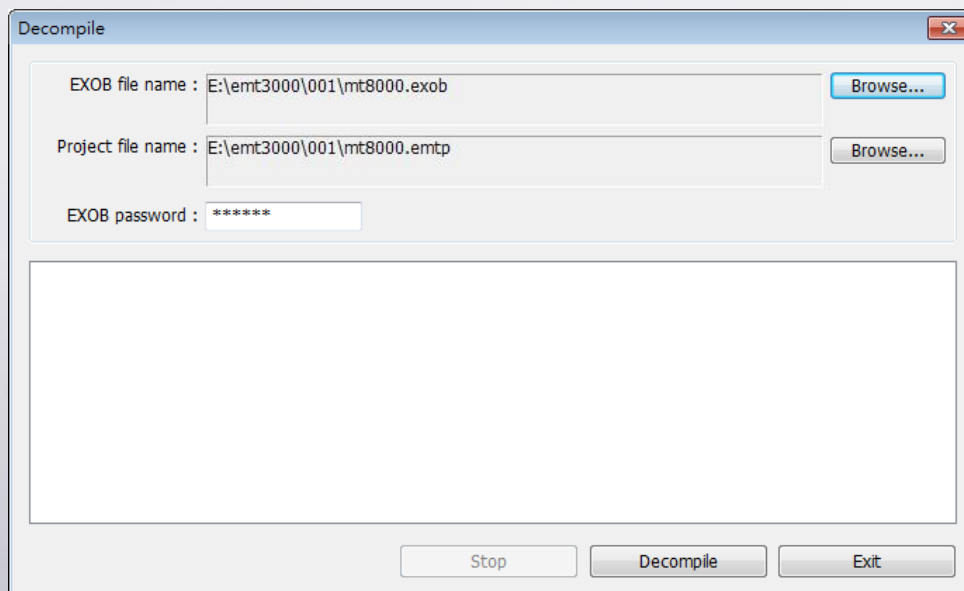
Step 5. In [Project folder] » [001], add the filename extension “.exob” to the

mt8000 filename (e.g., mt8000 -> mt8000.exob). Please note that the format of the uploaded project file may differ due to HMI model / OS version. If only project.cxob / project.exob file is uploaded, you may skip this step.

Step 6. Launch EasyBuilder, click [File] » [Decompile].



Step 7. Select project.cxob / mt8000.exob file and click [Decompile]. A *.cmtmp / *.emtp file will be generated.



Step 8. Open the *.cmtmp / *.emtp file in EasyBuilder to edit the project.