

Bosch Rexroth SIS (Symbolic Addressing)

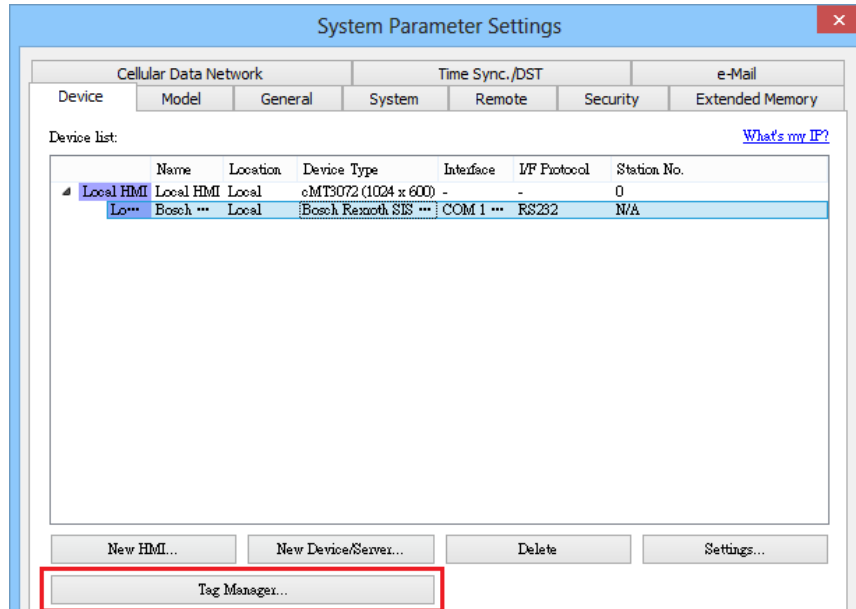
Supported Series: IndraDrive HCS02

HMI Setting:

Parameters	Recommended	Options	Notes
PLC type	Bosch Roxroth SIS (Symbolic Addressing)		
PLC I/F	RS232		
Baud rate	38400		
Data bits	8		
Parity	None		
Stop bits	1		

How to Import Tags:

1. Click **[New]** to add **[Bosch Roxroth SIS (Symbolic Addressing)]** driver, and then click **[Tag Manager]**.



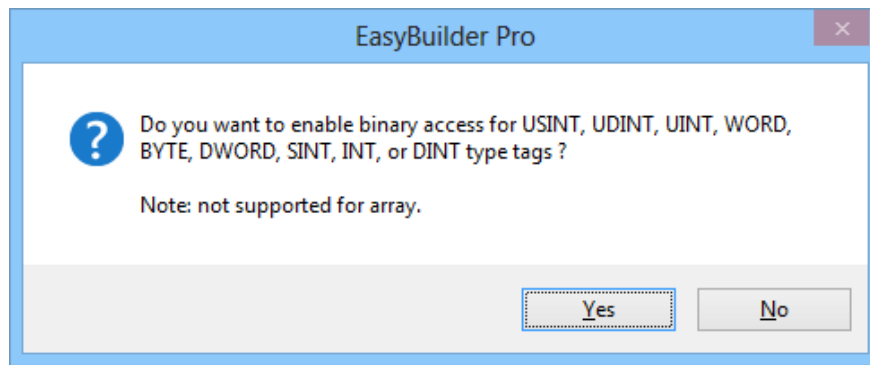
2. Select the tag **(.SYM_XML)** file to be imported.

How to generate *.SYM_XML:

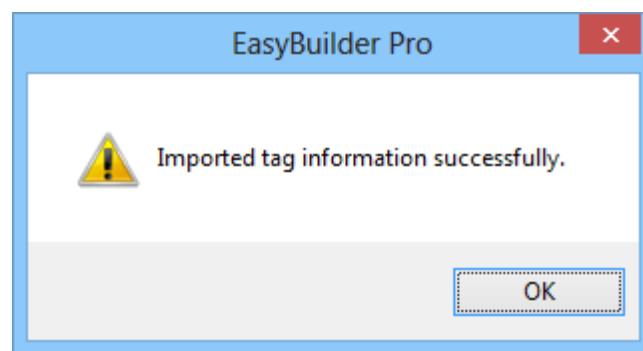
step1. **[Project]** -> **[Options]** -> **[Symbol configuration]** , select **[Dump symbol entries]** and **[Dump XML symbol table]**.

step2. Open **[Configure symbol file]**, select **[Export data entries]**

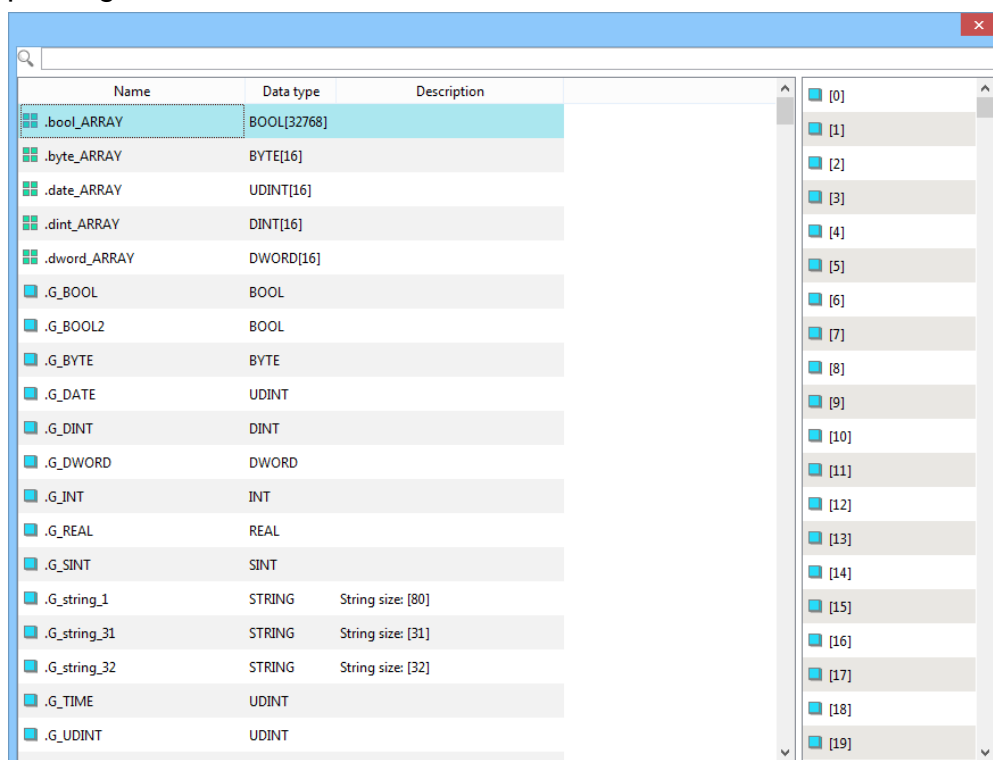
3. Choose whether to enable the binary access function.



4.Imported tag information successfully.



4. Display import tag information.



Wiring Diagram:

RS-232 (CM1-SC02A: 9P D-Sub)

The serial port pin assignments may vary between HMI models, please click the following [link](#) for more information.

