

EMERSON ControlWave (Ethernet) – Free Tag

Names

Supported Series: EMERSON ControlWave MICRO

Website: <http://www2.emersonprocess.com/en-US/Pages/Home.aspx>

HMI Setting:

| Parameters | Recommended | Options | Notes |
|-----------------|---|---------|---------|
| PLC type | EMERSON ControlWave (Ethernet) – Free Tag Names | | Use UDP |
| PLC I/F | Ethernet | | |
| Port no. | 1234 | | |
| Source port no. | 1234 | | |

IP Address Settings

IP address :

Port no. :

Timeout (sec) : ▼

Turn around delay (ms) :

Source port no. :

The number of resending commands : ▼

Support Device Type:

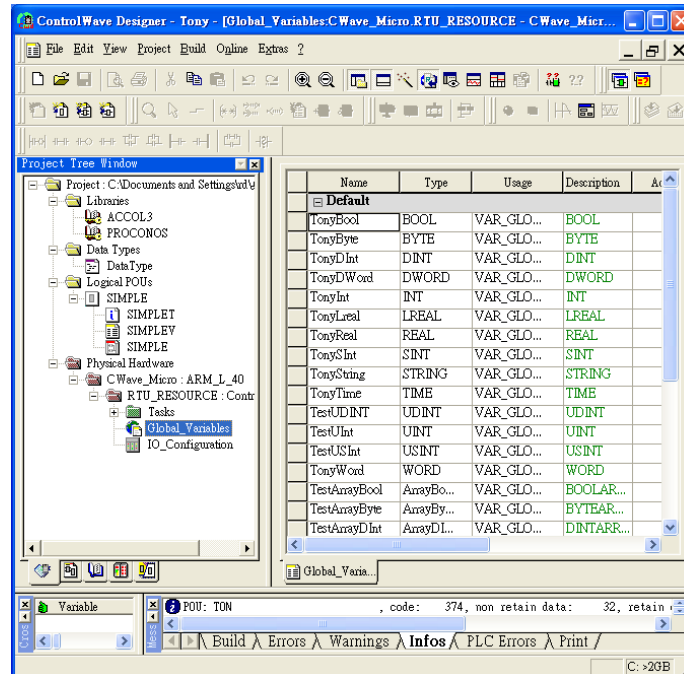
| Data type | EasyBuilder data format | Memo |
|-----------|-----------------------------------|--------|
| Bool | bit | |
| Byte | 16-bit BCD, Hex, Binary, Unsigned | 8-bit |
| SInt | 16-bit BCD, Hex, Binary, Signed | 8-bit |
| USInt | 16-bit BCD, Hex, Binary, Unsigned | 8-bit |
| Word | 16-bit BCD, Hex, Binary, Unsigned | 16-bit |
| Int | 16-bit BCD, Hex, Binary, Signed | 16-bit |
| UInt | 16-bit BCD, Hex, Binary, Unsigned | 16-bit |
| DWord | 32-bit BCD, Hex, Binary, Unsigned | 32-bit |
| DInt | 32-bit BCD, Hex, Binary, Signed | 32-bit |
| Real | 32-bit Float | 32-bit |
| UDInt | 32-bit BCD, Hex, Binary, Unsigned | 32-bit |
| LInt | 64-bit Signed | 64-bit |
| ULInt | 64-bit Unsigned | 64-bit |
| LWord | 64-bit Unsigned | 64-bit |
| Double | 64-bit Float | 64-bit |

Note1: For device types: **DWord** / **DINT** / **UDINT** / **Real** , error may occur if the value exceeds 7 digits (million).

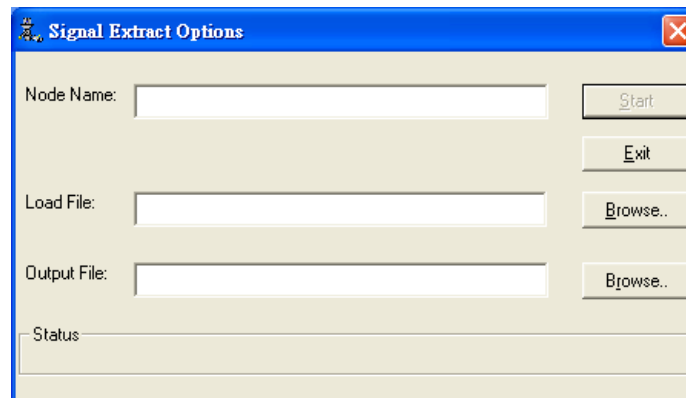
Note2: EBPro V6.03.02 or later supports 64 bits data type (**cMT Series only**), but please note that the address limit range is 48 bits in maximum.

PLC Setting:

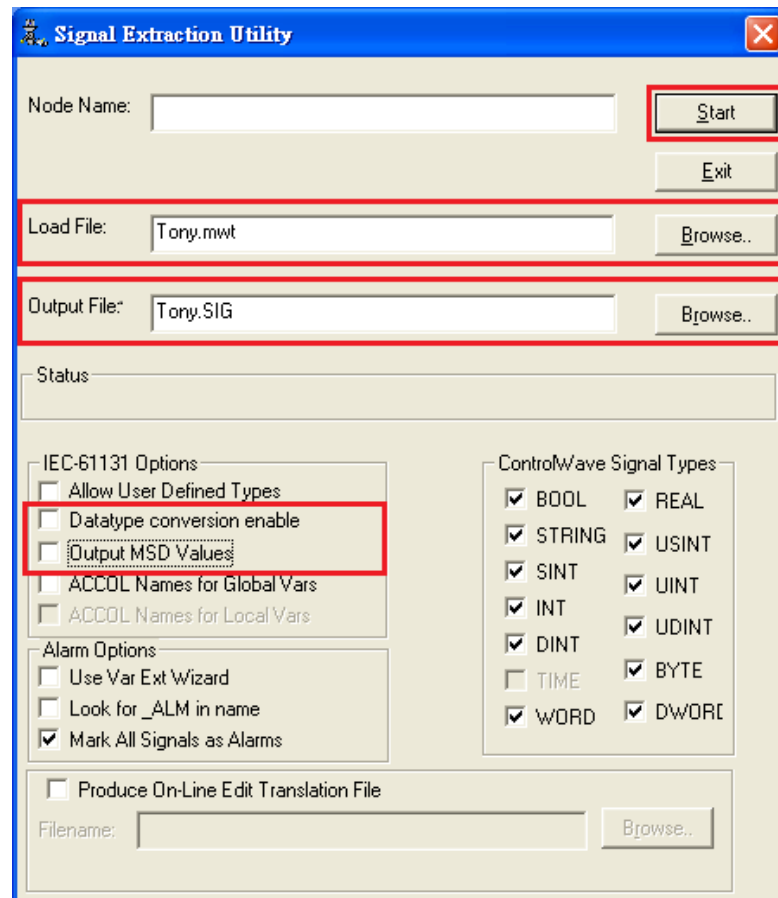
1. Under **Global Variables** create the tags, a tag name with over 20 words can affect communication, please avoid it.



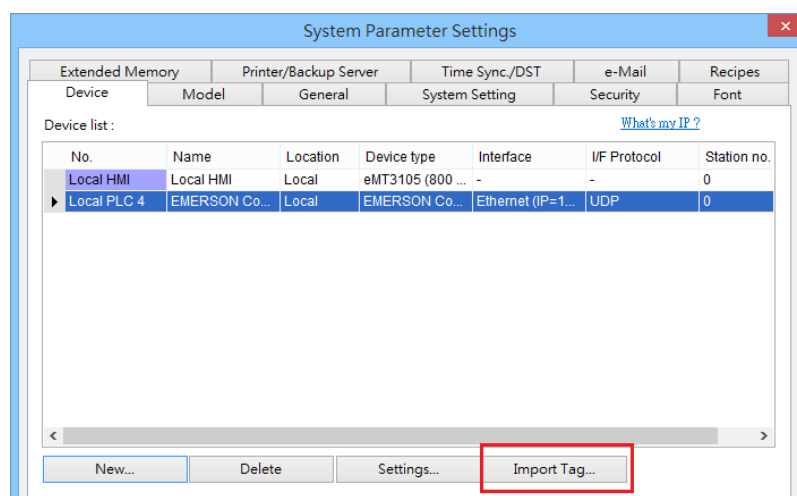
2. Open the program from **Programs -> OpenBSI Tool -> Common Tools -> Signal Extractor**.



3. Browse for the file name in **Load File** field, and then the **Output File** field will automatically generate the SIG file name. In **IEC-61131 Options** group box, deselect **Datatype conversion enable** and **Output MSD Values** check boxes, and then click **Start** to generate the file for tag import.



4. Import the tags after adding the driver in EasyBuilder.



Wiring Diagram:

Ethernet cable:

