

Mitsubishi A173UH/A2A/A2U/A2AS/A2USH/A3U

Supported Series: Mitsubishi A173UH,A2A,A2U,A2AS,A2USH,A3U

Website: <http://www.mitsubishi-automation.com/>

HMI Setting:

| Parameters | Recommended | Options | Notes |
|----------------------|--|-----------------------------------|-------|
| PLC type | Mitsubishi A173UH/A2A/A2U/A2AS/A2USH/A3U | | |
| PLC I/F | RS232 | | |
| Baud rate | 9600 | | |
| Data bits | 8 | | |
| Parity | Odd | | |
| Stop bits | 1 | | |
| PLC sta. no. | 0 | | |
| File register | 0 | 0 ~ 8 | *Note |
| Device type | A2A / A2U | A2A/A2U/A2AS/A2USH/ A173UH/A3U | |

*Note: Parameter -> Memory capacity -> File register

The screenshot shows the 'A parameter' dialog box with the following settings:

- Program capacity:** Sequence (1--30) Microcomputer. Main: 6 K steps, 0 Kbytes. Network: 0 Kbytes.
- Sub-sequence (0--30):** Sub-microcomputer (None). Sub1: 0 K steps, 0 Kbytes. Sub2: 0 K steps. Sub3: 0 K steps.
- File register (0--8):** 1 K points, 2048 Bytes (highlighted with a red box).
- Capacity for debugging:** Sampling trace, Status latch (data memory), Status latch (file register) - all set to 0 Kbytes.
- Memory capacity information:** Main capacity: 12 Kbytes, Sub capacity: 0 Kbytes, Total capacity: 18 Kbytes.

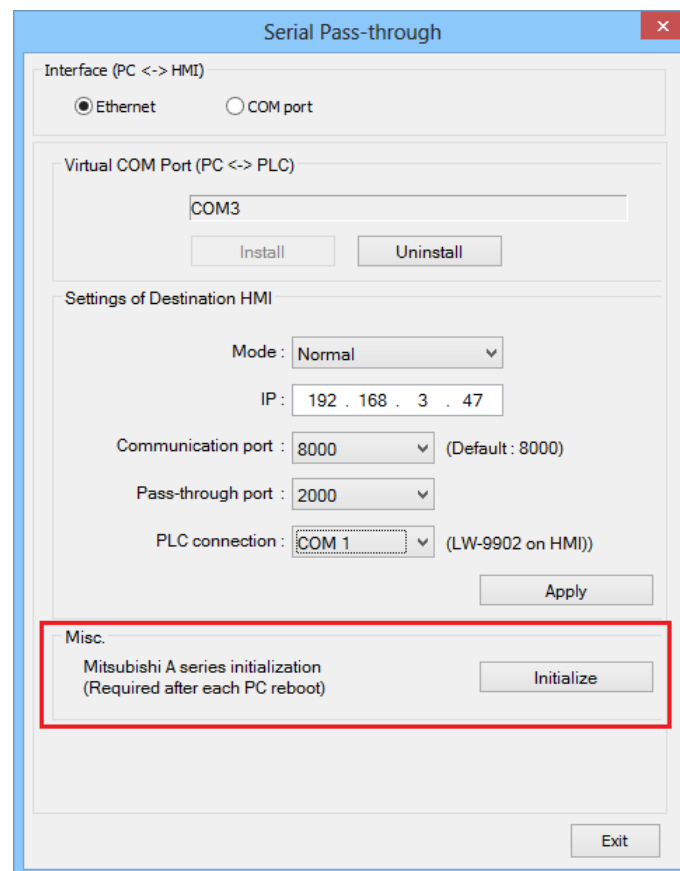
Buttons at the bottom: Acknowledge XY assignment, Default, Check, End, Cancel.

Device Address:

| Bit/Word | Device type | Format | Range | Memo |
|----------|-------------|--------|-----------|-----------------|
| B | X | HHHH | 0 ~ 270f | Input Relay |
| B | Y | HHHH | 0 ~ 270f | Output Relay |
| B | M | DDDD | 0 ~ 9999 | Auxiliary Relay |
| B | B | HHHH | 0 ~ ffff | |
| B | F | DDDDD | 0 ~ 65535 | |
| W | TV | DDD | 0 ~ 2047 | Timer Memory |
| W | CV | DDD | 0 ~ 1023 | Counter Memory |
| W | D | DDDD | 0 ~ 9999 | Data Register |
| W | W | HHHH | 0 ~ ffff | |
| W | R | DDDDD | 0 ~ 65535 | |

Pass-through:

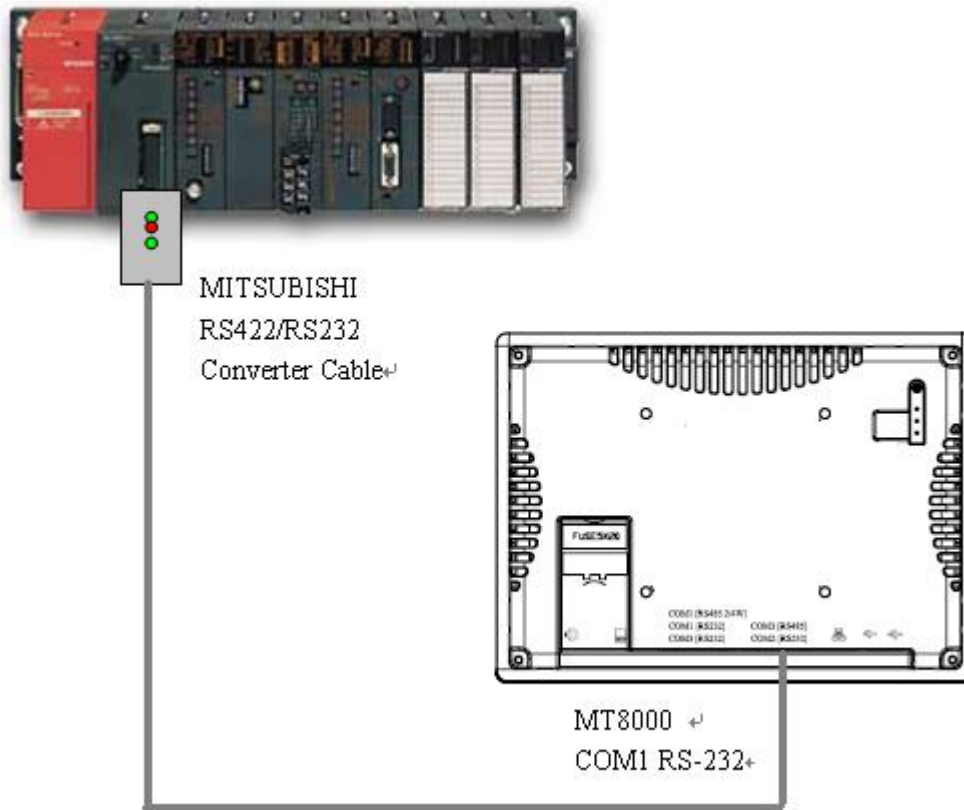
When the PC reboots or virtual com port is reinstalled, it needs to be re-initialized for pass-through.



Wiring Diagram:

Use the RS422 to RS232 PLC programming cable (shown as follows)

MITSUBISHI AnS CPU



Note: Due to hardware limitations, this PLC is not supported by HMI models without RTS/CTS.

Diagram 1

RS-232

The serial port pin assignments may vary between HMI models, please click the following link for more information.

| HMI | PLC Programming Converter | | PLC |
|----------------------|---------------------------|------|-------------------------|
| Link | | | RS422 25P D-Sub Male |
| Rx | TX | TX+ | 2 RX+ |
| Tx | RX | RX+ | 3 TX+ |
| GND | GND | DTR+ | 4 DSR+ |
| RTS | CTS | GND | 7 GND |
| CTS | RTS | TX- | 15 RX- |
| | | RX- | 16 TX- |
| | | DTR- | 17 DSR- |

Diagram 2

cMT-G01, cMT-G02, cMT-SVR-100/200, cMT-FHDX-820, cMT-SVRX-820 connection diagram

| HMI | | PLC |
|----------------------------------|----|----------------------------|
| Link RS485-4W | | A Series PLC CPU 25 pin |
| 8 TX+ | ←→ | 2 RX+ |
| 9 TX- | ←→ | 15 RX- |
| 6 RX+ | ←→ | 3 TX+ |
| 7 RX- | ←→ | 16 TX- |
| 1 Data+ | ←→ | 4 CTS+ |
| 4 Data- | | 17 CTS- |
| 5 GND | | 7GND |
| | | 20 21 Short |