

Mitsubishi M70 (Ethernet)

Supported Series : Mitsubishi M70 (QJ71E71+Q04A CPU)

Website: <http://www.mitsubishi-automation.com>

HMI Setting:

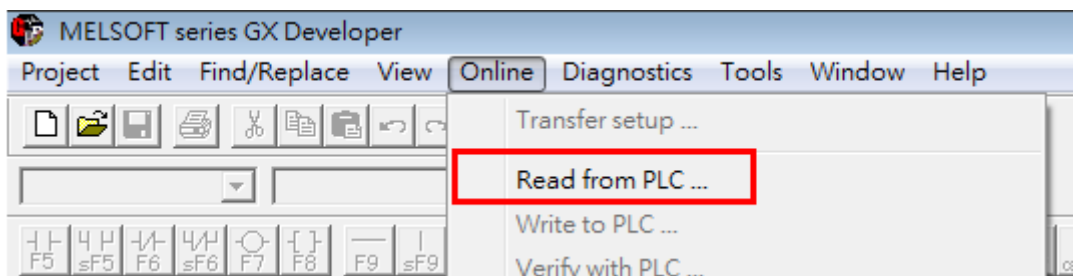
Parameters	Recommended	Options	Notes
PLC type	Mitsubishi M70 (Ethernet)		
PLC I/F	Ethernet		
Port no.	5002		

Online simulator	YES	EasyAccess 2.0	YES
-------------------------	-----	-----------------------	-----

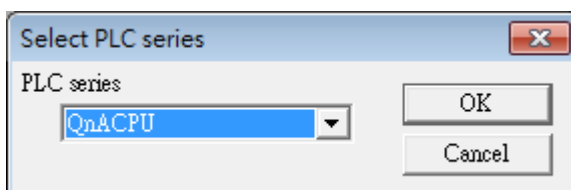
*Only support 1 HMI to 1 PLC for communication.

PLC Setting:

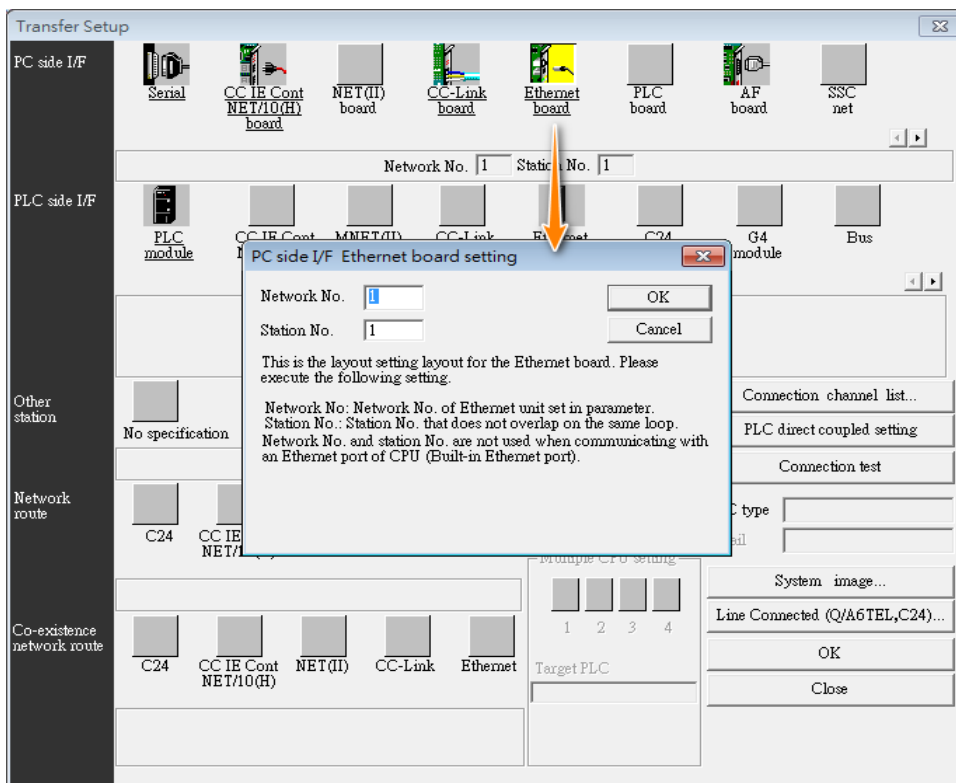
1. GX Developer -> Online -> Read from PLC



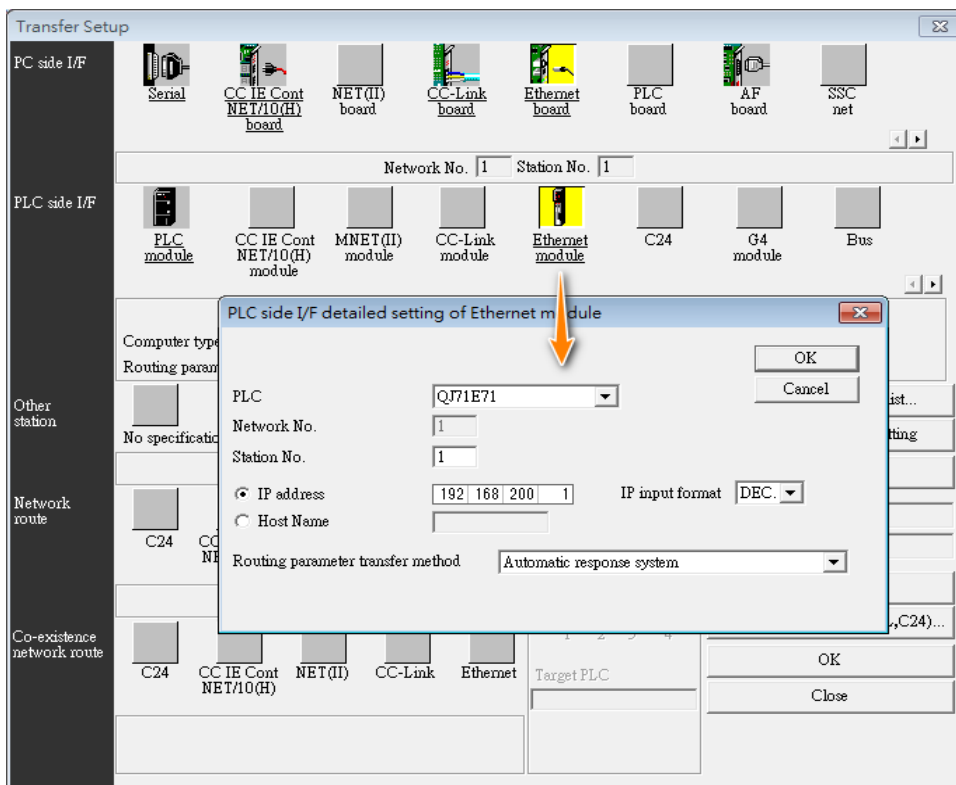
2. Select PLC series -> QnACPU -> OK



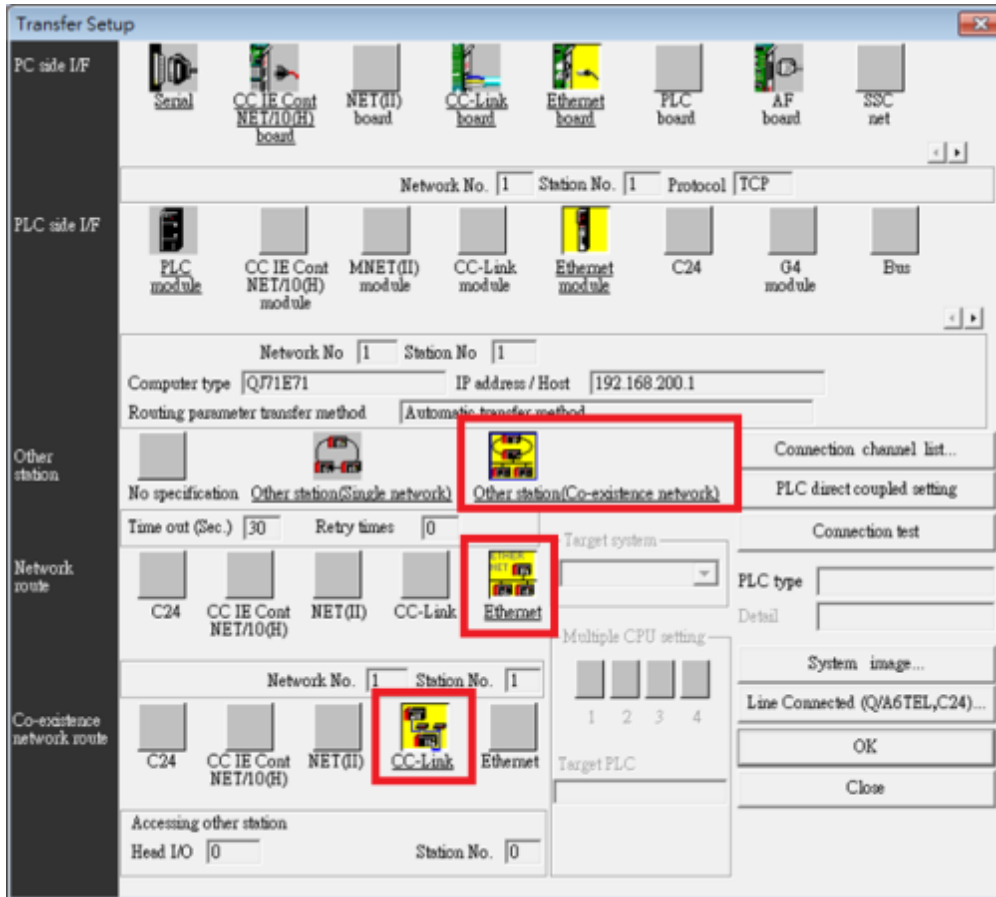
3. Ethernet board -> PC side I/F Ethernet board setting



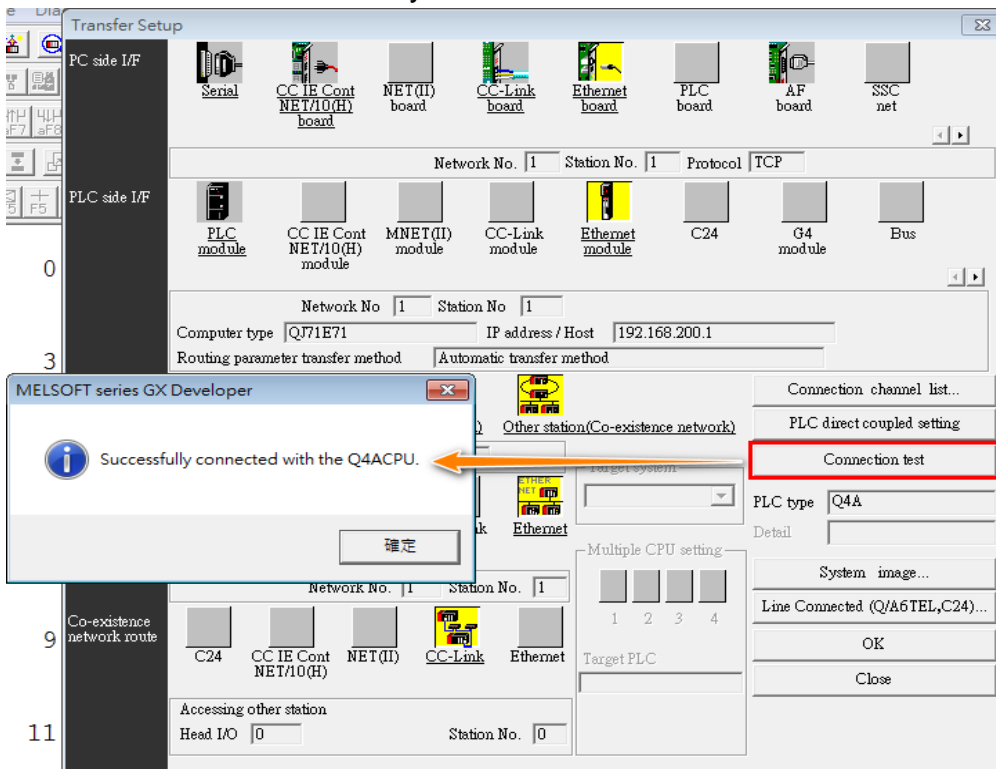
4. Ethernet module -> PC side I/F detailed setting of Ethernet module



5. Other station (Co-existence network) / Ethernet / CC-Link



6. Connection test -> Successfully



Device Address:

Bit/Word	Device type	Format	Range	Memo
B	X	HHHH	0 ~ 1fff	
B	Y	HHHH	0 ~ 1fff	
B	M	DDDDD	0 ~ 10239	
B	L	DDDD	0 ~ 8191	
B	F	DDDD	0 ~ 2047	
B	V	DDDD	0 ~ 2047	
B	B	HHHH	0 ~ 1fff	
B	SM	DDDD	0 ~ 2047	
B	SB	HHH	0 ~ 7ff	
B	DX	HHH	0 ~ fff	
B	DY	HHH	0 ~ fff	
B	D_Bit	DDDDDh	0 ~ 12287f	h: bit no.(0~f)
B	ZR_Bit	DDDDDDh	0 ~ 1042431f	h: bit no.(0~f)
B	TC	DDDD	0 ~ 2047	
B	TS	DDDD	0 ~ 2047	
B	CC	DDDD	0 ~ 1023	
B	CS	DDDD	0 ~ 1023	
B	STC	DD	0 ~ 63	
B	STS	DD	0 ~ 63	
B	D	DDDDD	0 ~ 12287	
W	W	HHHH	0 ~ 1fff	
W	SW	HHH	0 ~ 7ff	
W	R	DDDDD	0 ~ 32767	
W	SD	DDDD	0 ~ 2047	
W	Z	DD	0 ~ 15	
W	ZR	DDDDDD	0 ~ 1042431	
W	TN	DDDD	0 ~ 2047	
W	CN	DDDD	0 ~ 1023	
W	STN	DD	0 ~ 63	

Wiring Diagram:

Ethernet cable:

