

# Mitsubishi M80 CNC (Ethernet)

Supported Series: Mitsubishi M80 CNC (Ethernet)

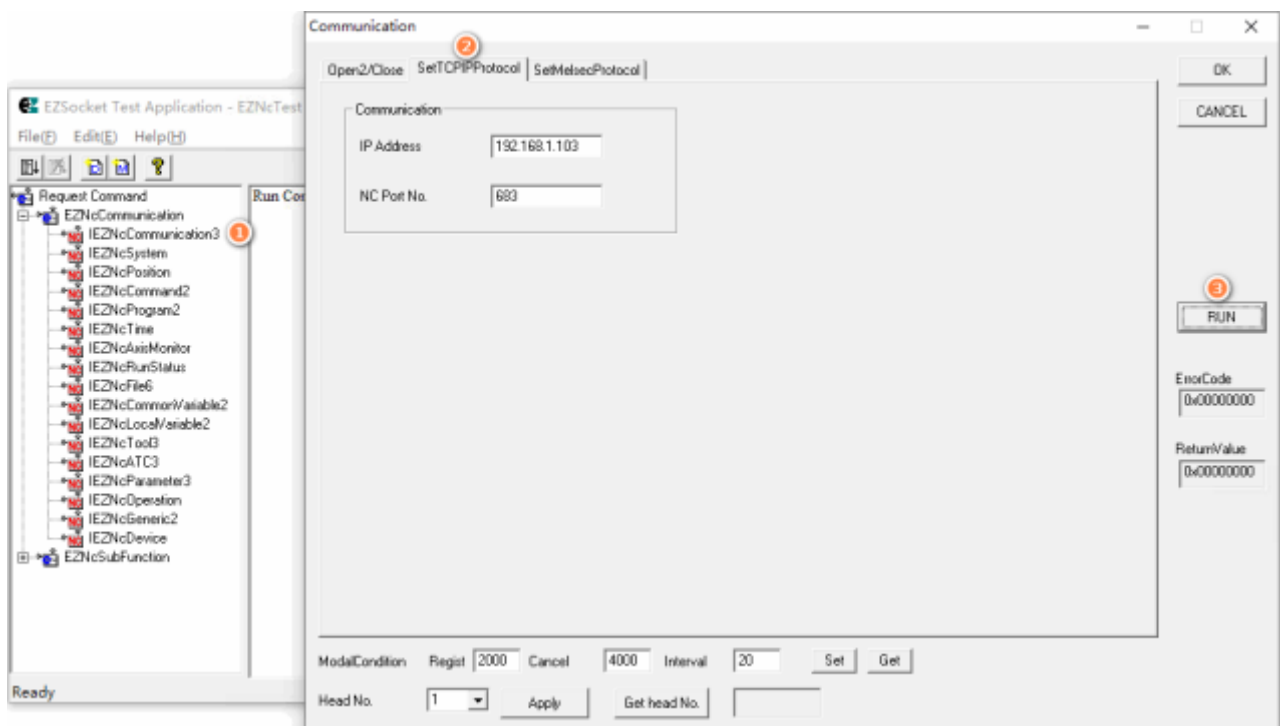
Website: <http://www.mitsubishi-automation.com>

## HMI Settings:

Parameters	Recommended	Options	Notes
<b>PLC type</b>	Mitsubishi M80 CNC (Ethernet)		
<b>PLC I/F</b>	Ethernet		
<b>Port no.</b>	683		

## PLC Settings:

Step 1: EZNoCommuncication -> IEZNoCOmmouncation3 -> SetTCPIPProtocol -> RUN

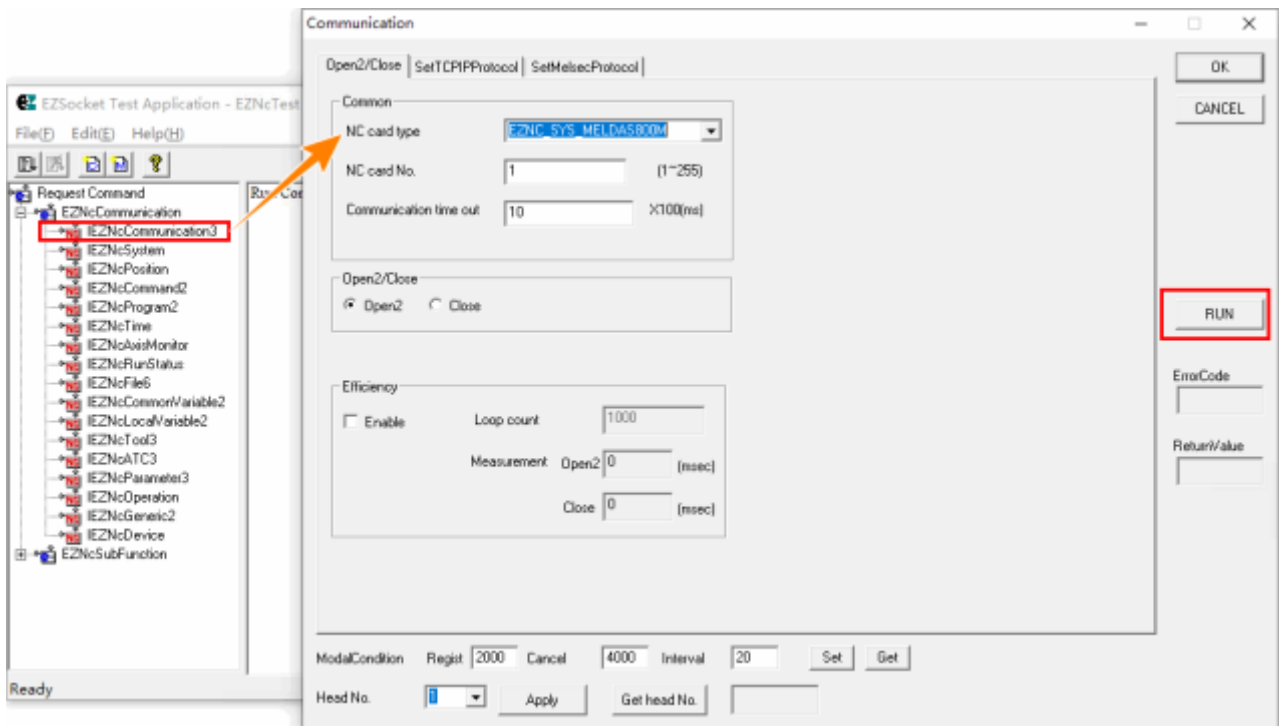


The screenshot displays the 'EZSocket Test Application' interface. On the left, a tree view under 'Request Command' shows 'EZNoCommunication' expanded, with 'IEZNoCommunication3' selected and marked with a red circle '1'. The main window shows the 'Communication' dialog box with the 'SetTCPIPProtocol' tab selected, marked with a red circle '2'. The dialog box contains the following fields:

- IP Address: 192.168.1.103
- NC Port No.: 683

At the bottom of the dialog box, there are fields for 'ModalCondition', 'Regist' (2000), 'Cancel' (4000), and 'Interval' (20), along with 'Set' and 'Get' buttons. A 'Head No.' dropdown is set to '1'. On the right side of the dialog box, there are 'OK', 'CANCEL', and 'RUN' buttons, with the 'RUN' button highlighted by a red circle '3'. Below the 'RUN' button, there are fields for 'Error Code' (0x00000000) and 'Return Value' (0x00000000).

## Step 2: EZNoCommunication -&gt; IEZNoCOmmouncation3 -&gt; Open2/Close -&gt; RUN



## Device Address:

Bit/Word	Device type	Format	Range	Memo
W	Position_Distance	D	1 ~ 8	
W	Position_FeedSpeed	D	0 ~ 4	
W	Position_ProgramPosition	D	1 ~ 8	
W	Position_WorkPosition	D	1 ~ 8	
W	Position_MachinePosition	D	1 ~ 8	
W	Position_CurrentPosition	D	1 ~ 8	
W	CommonVariable2_CommonV	DDDDDDDD	10000 ~ 90739901	
W	CommonVariable2_Name	DDD	500 ~ 599	
W	LocalVariable2_Local	DDDD	100 ~ 3305	
W	RunStatus_InvalidStatus	D	0	
W	RunStatus_CommandStatus	D	0	
W	RunStatus_CuttingMode	D	0	
W	RunStatus_AxisStatus	DDD	100 ~ 806	
W	RunStatus_RunStatus	D	0 ~ 3	
W	Time_ClockData	D	0 ~ 5	
W	Time_AliveTime	D	0	
W	Time_RunTime	D	0	
W	Time_StartTime	D	0	

Bit/Word	Device type	Format	Range	Memo
W	Time_EstimateTime	D	0 ~ 2	
W	Command2_ToolCommand	DDD	100 ~ 802	
W	Command2_FeedCommand	D	0 ~ 5	
W	Command2_Command	DDD	100 ~ 830	
W	Command2_Command2	DDD	1 ~ 304	
W	System_Version	DDD	100 ~ 803	
W	System_Systeminformation	D	0 ~ 1	
W	System_Alarm	DDDD	0 ~ 1106	

## Wiring Diagram:

### Ethernet cable:

