

## Mitsubishi Q00/Q00UJ/Q01/QJ71

Supported Series: Mitsubishi Q series PLC with QJ71C24 communication module, Q00, Q00J, Q00UJ, Q01, Q02H, Q06H, Q12H, Q25H, Q12PH, Q25PH CPU port.

Website: <http://www.mitsubishi-automation.com>

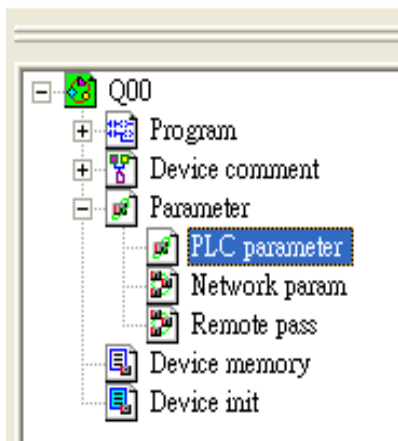
### HMI Setting:

Parameters	Recommended	Options	Notes
<b>PLC type</b>	Mitsubishi Q00/Q00UJ/Q01/QJ71		
<b>PLC I/F</b>	RS232	RS485 2W/4W, RS232	
<b>Baud rate</b>	9600	9600~115200	
<b>Data bits</b>	8		
<b>Parity</b>	Odd		
<b>Stop bits</b>	1		
<b>PLC sta. no.</b>	0		

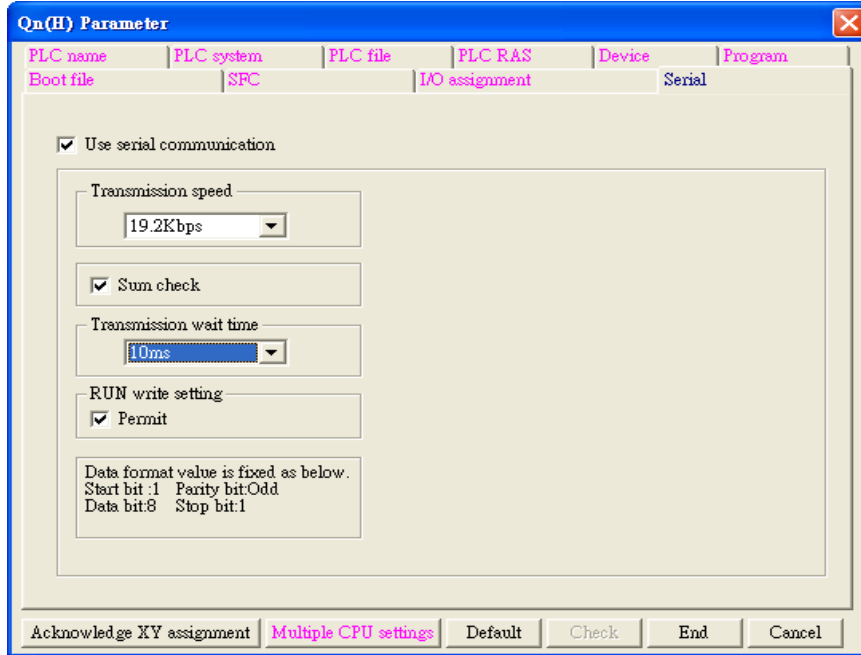
<b>Online simulator</b>	Yes	<b>Extend address mode</b>	NO
-------------------------	-----	----------------------------	----

### PLC Setting:

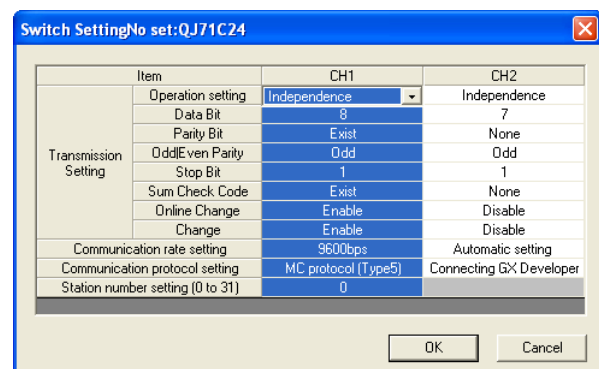
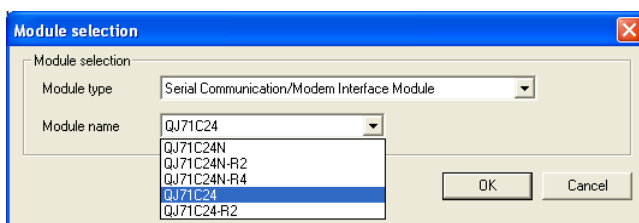
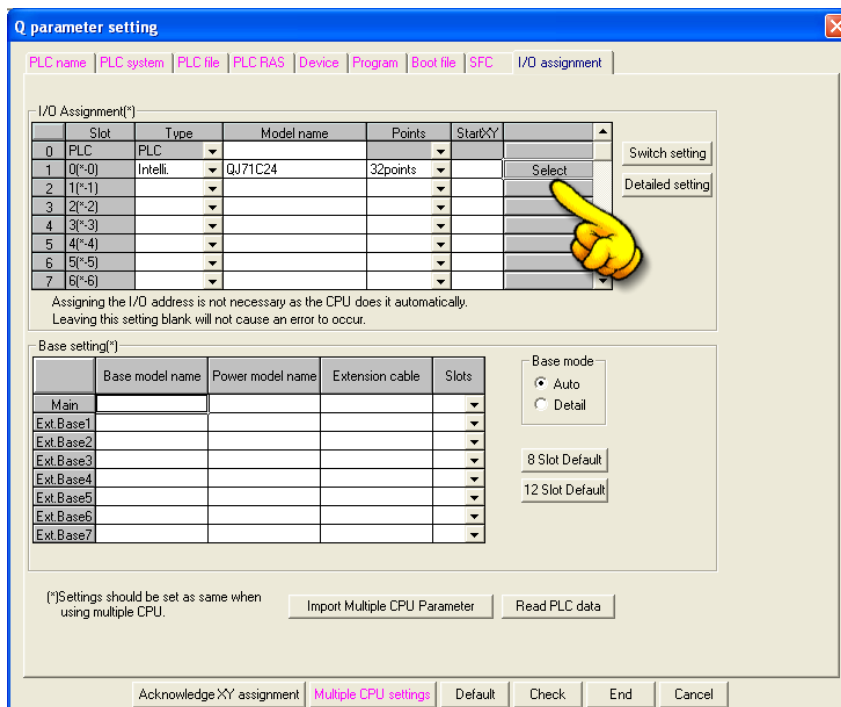
Q00, Q01 CPU port setting:



1. In GX Developer "PLC data list" click [PLC parameter].
2. In "PLC parameter" go to [Serial] page.
3. Select [Use serial communication].
4. Set [Transmission speed] to 9600~115200.
5. Select [Sum check].
6. Set [Transmission wait time] to 10ms.
7. Permit [RUN write setting].
8. Click [End] to close the dialog.
9. Write the PLC Parameter to PLC.
10. Reset PLC, the parameter will be activated.



QJ71 setting:



## Device Address:

Bit/Word	Device type	Format	Range	Memo
B	X	HHHH	0 ~ 1fff	Input Relay
B	Y	HHHH	0 ~ 1fff	Output Relay
B	M	DDDDD	0 ~ 61439	Internal Relay
B	L	DDDDD	0 ~ 32767	Latch Relay
B	F	DDDDD	0 ~ 32767	Annunciator
B	V	DDDDD	0 ~ 32767	Edge Relay
B	B	HHHH	0 ~ efff	Link Relay
B	TC	DDDD	0 ~ 2047	Timer Coil
B	SS	DDDDD	0 ~ 25471	Retentive Timer Contact
B	SC	DDDDD	0 ~ 25471	Retentive Timer Coil
B	CS	DDDDD	0 ~ 25471	Counter Contact
B	CC	DDDDD	0 ~ 25471	Counter Coil
B	SB	HHH	0 ~ 7ff	Special Link Relay
B	S	DDDD	0 ~ 8191	Step Relay
B	DX	HHHH	0 ~ 1fff	Direct Input
B	DY	HHHH	0 ~ 1fff	Direct Output
B	TS	DDDD	0 ~ 2047	Timer Contact
B	SM	DDDD	0 ~ 2047	
B	D_Bit	DDDDDDDDh	0 ~ 4212735f	
B	W_Bit	HHHHh	0 ~ 2ffff	
B	ZR_Bit	HHHHHh	0 ~ fe7fff	
B	ZR_Dec_Bit	DDDDDDDDh	0 ~ 1042431f	
W	W	HHHH	0 ~ 2fff	Link Register
W	TN	DDDD	0 ~ 2047	Timer Current Value
W	SN	DDDD	0 ~ 2047	Retentive Timer Current Value
W	CN	DDDD	0 ~ 1023	Counter Current Value
W	R	FFDDDDD	0 ~ 3132767	File Register (FF:File No. 0~31) (DDDDD:0~32767)
W	SW	HHH	0 ~ 7ff	Special Link Register
W	Z	DD	0 ~ 19	Index Register
W	ZR	HHHHH	0 ~ fe7a5	File Register
W	ZR_decimal_addr	DDDDDDD	0 ~ 1042341	
W	D	DDDDDDD	0 ~ 4212735	Data Register
W	SD	DDDD	0 ~ 2047	
W	Serial_No	D	0 ~ 7	
W	Product_No	D	0 ~ 7	

## Wiring Diagram:

QJ71C24 CH.2 RS422 Terminal

### Diagram 1

#### RS-485 4W

The serial port pin assignments may vary between HMI models, please click the following link for more information.

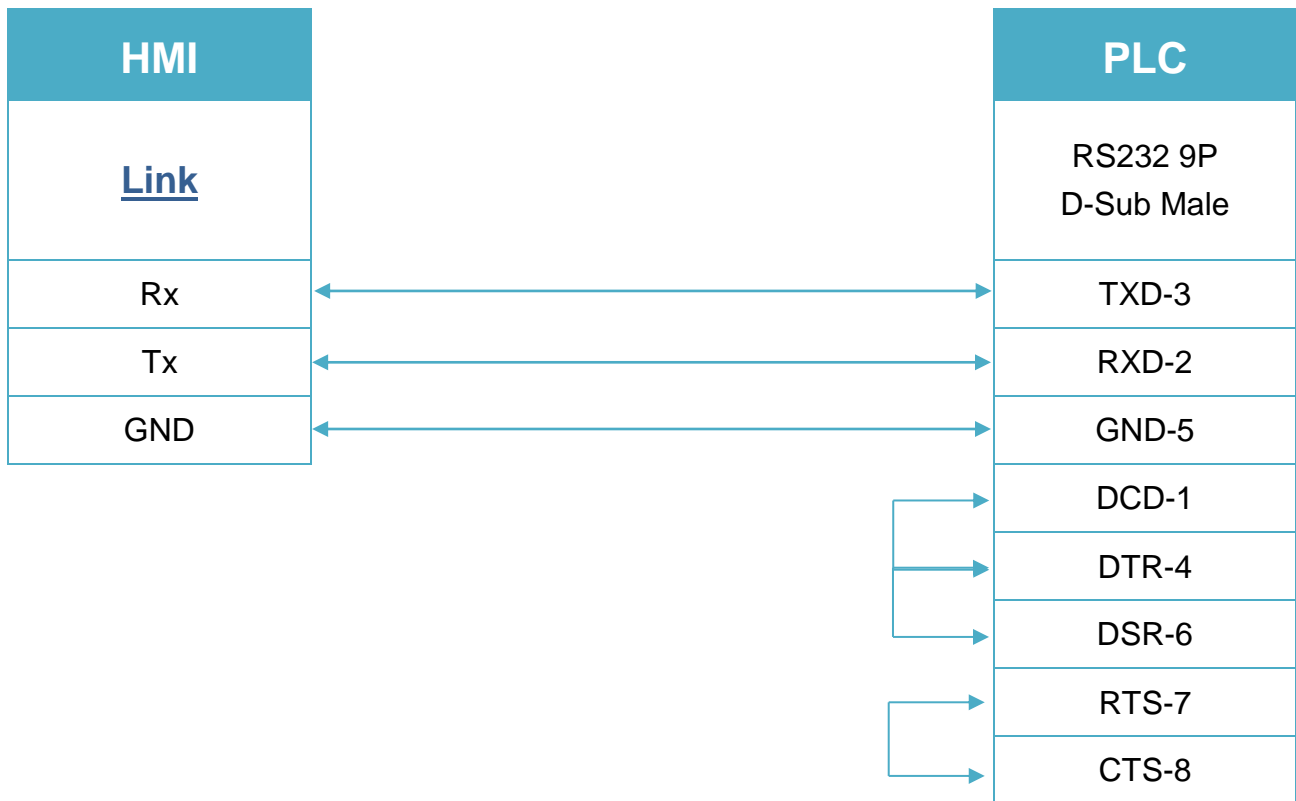


QJ71C24 CH.2 RS232

## Diagram 2

### RS-232

The serial port pin assignments may vary between HMI models, please click the following link for more information.



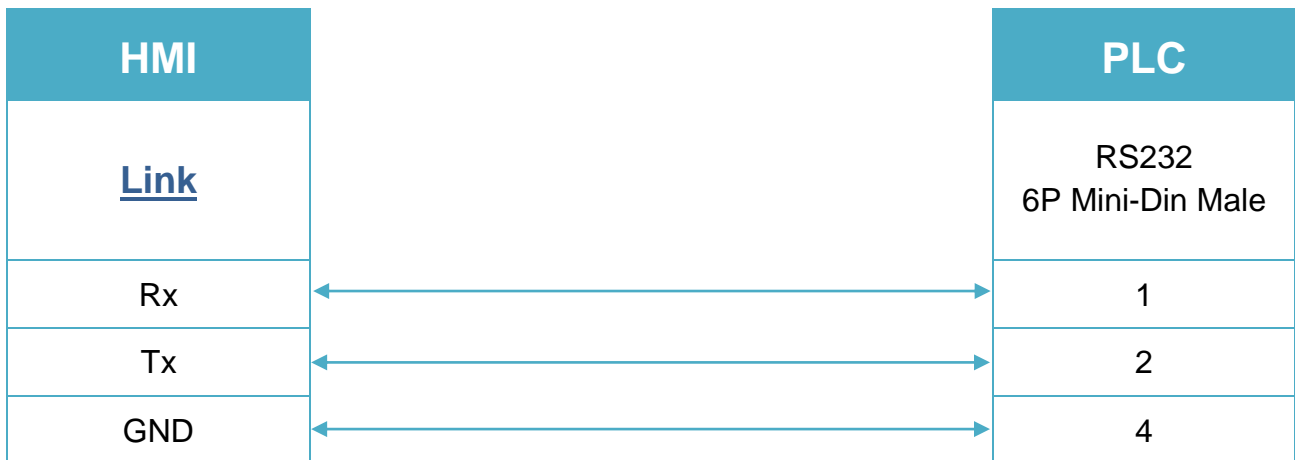
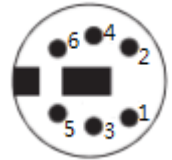
6P Mini-DIN: Q00, Q01 CPU port RS232

### Diagram 3

#### RS-232

The serial port pin assignments may vary between HMI models, please click the following link for more information.

**The following is the view from the soldering point of a connector.**



6P Mini-DIN: Q00UJ CPU port RS232

## Diagram 4

### RS-232

The serial port pin assignments may vary between HMI models, please click the following link for more information.

**The following is the view from the soldering point of a connector.**

