

## Mitsubishi iQ-R Series (Ethernet)

Supported Series: Mitsubishi

R00/R01/R02/R04/R08/R16/R32/R120/R04EN/R08EN/R16EN/R32EN/R120EN/R08P/R16P/R32P/R120P/R08SF/R16SF/R32SF/R120SF/R08PSF/R16PSF/R32PSF/R120PSF

CPU Ethernet Module, M80 CNC Controller

Website: <http://www.mitsubishi-automation.com>

### HMI Settings:

Parameters	Recommended	Options	Notes
PLC type	Mitsubishi iQ-R Series (Ethernet)		
PLC I/F	Ethernet		
Port no.	Set identically to the PLC setting		Advised to set port no. to 4999
PLC sta. no.	Set identically to the PLC setting		
Network number	0	0~999	
Communication data code	Binary	Binary / ASCII	
PLC Mode	IR-F	IQ-F / IQ-R	Refer to Mitsubishi manual

### PLC Settings:

**[Setting Method]** Use IP Address

**[Online Change]** needs to be set to enable

**[Communication Data Code]** Binary

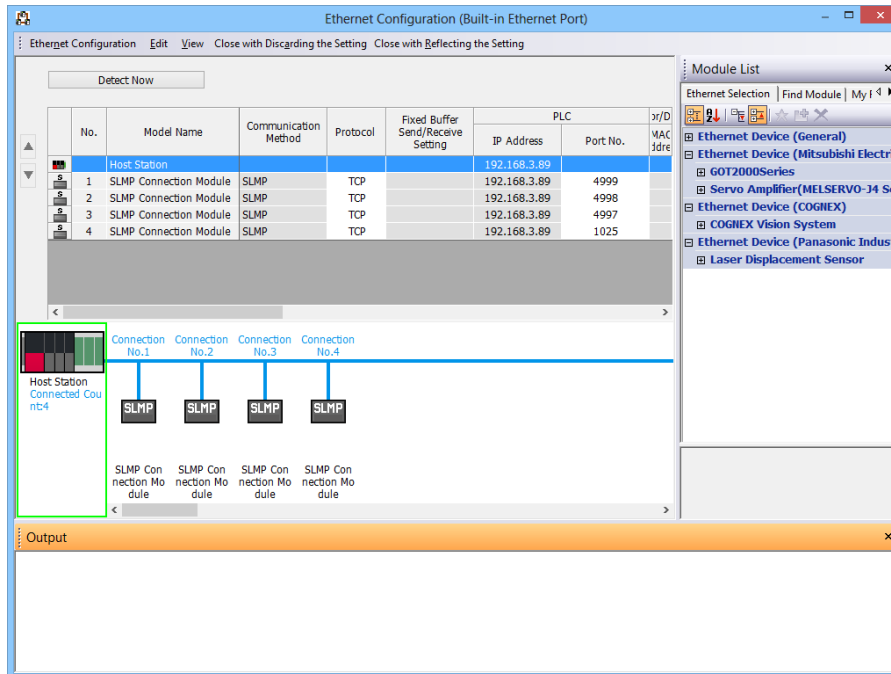
**[Opening Method]** do not open by program

Setting Item	Item	Setting
	<b>Owa Node Settings</b>	
	Parameter Setting Method	Parameter Editor
	IP Address	
	IP Address	192 . 168 . 3 . 89
	Subnet Mask	255 . 255 . 252 . 0
	Default Gateway	192 . 168 . 1 . 254
	Communications by Network No./Station No.	Disable
	Setting Method	Use IP Address
	Network No.	-----
	Station No.	-----
	Enable/Disable Online Change	Enable All (SLMP)
	Communication Data Code	Binary
	Opening Method	Do Not Open by Program
	<b>CC-Link IEF Basic Settings</b>	

## [Ethernet Configuration]

To connect PLC with multiple HMIs, Port No. must be set.

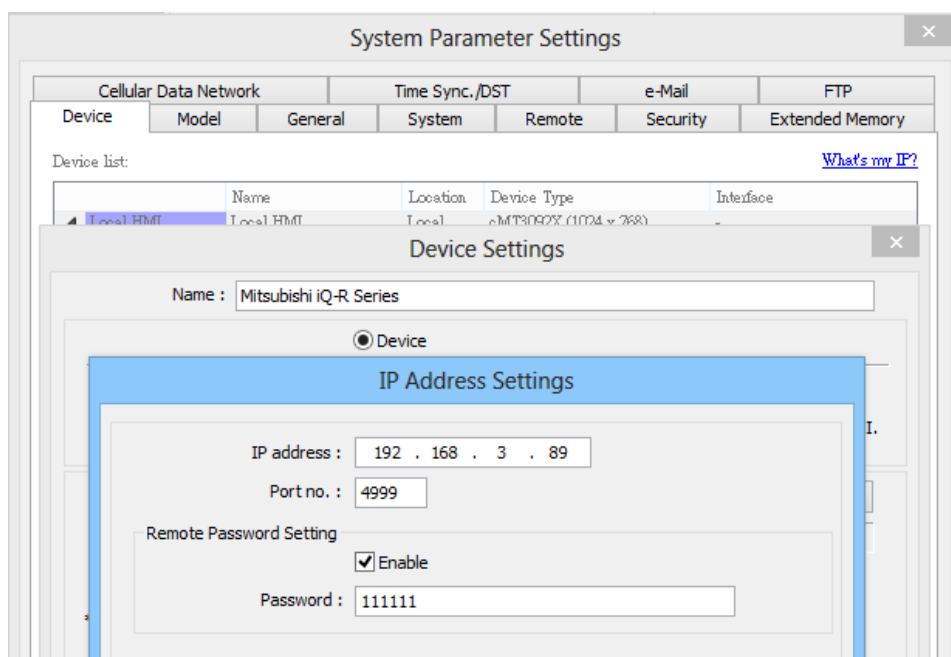
In GX WORK 3, the setting steps are: Project -> Parameter -> R04CPU -> Module Parameter -> Ethernet Port -> Setting Item -> External Device Configuration -> Detailed Setting



## [Remote Password Setting]

Set a remote password and a target connection in the engineering tool, and write the data to the CPU module.

Navigation Window => [Parameter] => [Remote Password] => [Remote Password Setting] Screen



## Device Address:

Bit/Word	Device type	Format	Range	Memo
B	X	HHHHh	0 ~ 2ffff	Input
B	Y	HHHHh	0 ~ 2ffff	Output
B	M	DDDDDDDD	0 ~ 153165823	Internal Relay
B	L	DDDDD	0 ~ 32767	Latch Relay
B	B	HHHHHHHh	0 ~ 9211fff	Link Relay
B	F	DDDDD	0 ~ 32767	Annunciator
B	SB	HHHHHHHh	0 ~ 9211fff	Link Special Relay
B	V	DDDDD	0 ~ 32767	Edge Relay
B	TS	DDDDDDDD	0 ~ 8993439	Timer Contact
B	TC	DDDDDDDD	0 ~ 8993439	Timer Coil
B	SS	DDDDDDDD	0 ~ 8993439	Retentive Timer
B	SC	DDDDDDDD	0 ~ 8993439	Retentive Timer Coil
B	CS	DDDDDDDD	0 ~ 8993439	Counter Contact
B	CC	DDDDDDDD	0 ~ 8993439	Counter Coil
B	SM	DDDD	0 ~ 4095	Special Relay
B	D_Bit	DDDDDDDDh	0 ~ 10117631f	Data Register
B	SD_Bit	DDDDh	0 ~ 4095f	Special Register
B	W_Bit	HHHHHHh	0 ~ 9a61fff	Link Register
B	SW_Bit	HHHHHHh	0 ~ 9a61fff	Link Special Register
B	R_Bit	DDDDh	0 ~ 32767f	
B	ZR_Bit	HHHHHHh	0 ~ 827ffff	
B	ZR_Dec_Bit	DDDDDDh	0 ~ 8552447f	
W	TN	DDDDDDDD	0 ~ 8993439	Timer Current Value
W	SN	DDDDDDDD	0 ~ 8993439	Retentive Timer Current
W	CN	DDDDDDDD	0 ~ 8993439	Counter Current Value
W	D	DDDDDDDD	0 ~ 10117631	Data Register
W	W	HHHHHH	0 ~ 9a61ff	Link Register
W	SW	HHHHHH	0 ~ 9a61ff	Special Link Register
W	SD	DDDD	0 ~ 4095	Special Register
W	Z	DD	0 ~ 23	Index Register
W	R	DDDDD	0 ~ 32767	
W	ZR	HHHHHH	0 ~ 827fff	
W	ZR_Dec	DDDDDD	0 ~ 8552447	

## Wiring Diagram:

### Ethernet cable:

