

# OPC UA Client

Supported Series: Weintek OPC UA Server, Unified Automation, Prosys, Kepware

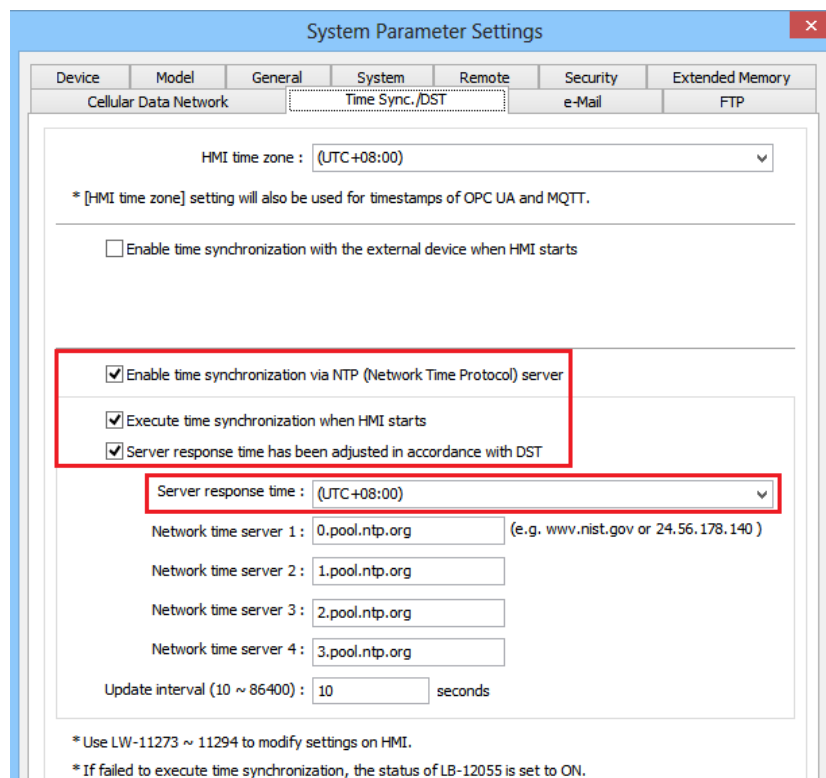
## HMI Setting:

Parameters	Recommended	Options	Notes
PLC type	OPC UA Client		
PLC I/F	Ethernet		
Port no.	4840		
Security policy	None	None / Basic128Rsa15 / Basic256 /	
Message security mode	None	None / Sign/ SignAndEncrypt	
<b>Re-Build Certificate when HMI Starts</b>			
<b>Use sha-256 mode (default sha-1)</b>			
<b>Support Uncertain Initial Value</b>			

<b>On-line simulator</b>	Yes	<b>Multi-HMI connect</b>	Yes
--------------------------	-----	--------------------------	-----

When you use opc ua client for the first time, you need to set time related settings, please refer to the settings below.

### System Parameter Setting -> Time Sync./DST



System Parameter Settings

Device | Model | General | System | Remote | Security | Extended Memory

Cellular Data Network | Time Sync./DST | e-Mail | FTP

HMI time zone : (UTC+08:00) ▼

\* [HMI time zone] setting will also be used for timestamps of OPC UA and MQTT.

Enable time synchronization with the external device when HMI starts

Enable time synchronization via NTP (Network Time Protocol) server

Execute time synchronization when HMI starts

Server response time has been adjusted in accordance with DST

Server response time : (UTC+08:00) ▼

Network time server 1 : 0.pool.ntp.org (e.g. www.nist.gov or 24.56.178.140)

Network time server 2 : 1.pool.ntp.org

Network time server 3 : 2.pool.ntp.org

Network time server 4 : 3.pool.ntp.org

Update interval (10 ~ 86400) : 10 seconds

\* Use LW-11273 ~ 11294 to modify settings on HMI.  
\* If failed to execute time synchronization, the status of LB-12055 is set to ON.

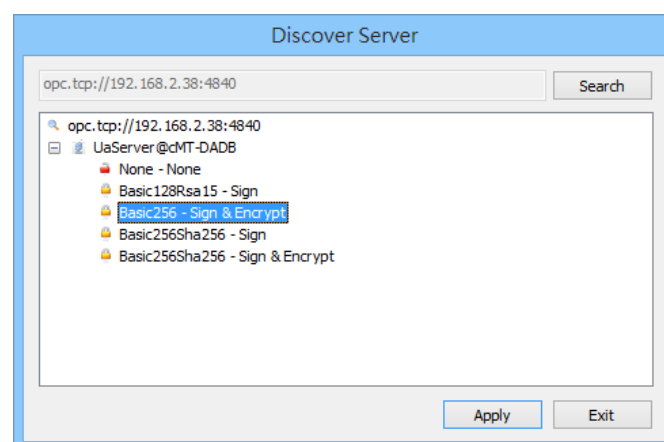
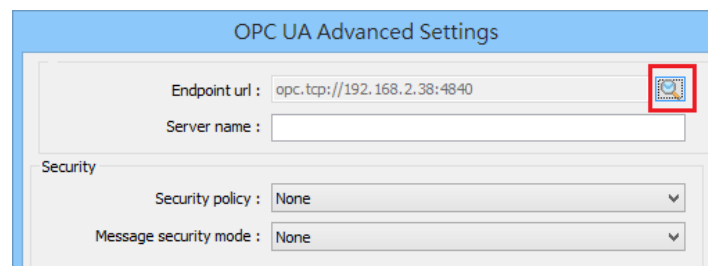
## Support Device Type:

Data type	EasyBuilder data format	Memo
Bool	bit	
Int	16-bit BCD, Hex, Binary, Signed	16-bit
UInt	16-bit BCD, Hex, Binary, Unsigned	16-bit
DInt	32-bit BCD, Hex, Binary, Signed	32-bit
Real	32-bit Float	32-bit
UDInt	32-bit BCD, Hex, Binary, Unsigned	32-bit
LInt	64-bit Signed	64-bit
ULInt	64-bit Unsigned	64-bit
Double	64-bit Float	64-bit

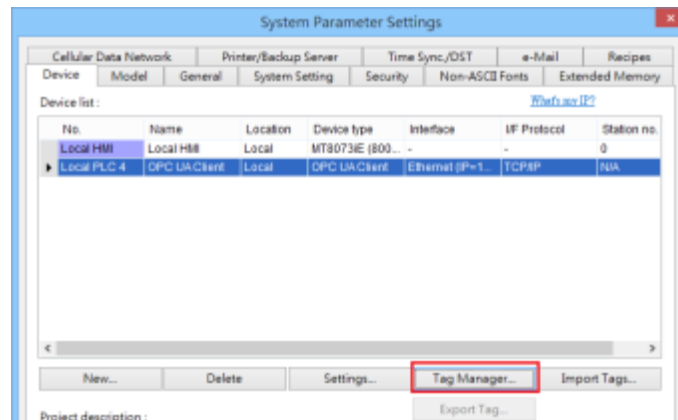
**Note:** EBPro V6.03.02 or later supports 64 bits data type (**cMT Series only**), but please note that the address limit range is 48 bits in maximum..

## Get Tags:

1. In EasyBuilder Pro, add OPC UA Client into the device list, set **[IP address]**, **[Port no.]**, and then open **[Security, Authentication]**.
2. Click the magnifier icon near the **[Endpoint url]** field to open Discover Server window. In the window the security parameters of OPC UA Server can be found. Click **[Apply]**, the parameters will be automatically filled into the fields in Security group box in OPC UA Settings window. Finish the rest of the settings and then click **[OK]** to leave.



3. Click Tag Manager. If **“Connection failed.”** message appears, please check the communication parameters.



4. In the Browsing list select the tags to be imported, click **[Add Items]** to add the selected ones into **[Import items]** list. Click **OK** to save and leave, and **“Get tag information successfully.”** message will show.

**Get Tag:** Get tag information again.

**Remove Unchecked:** Remove tag information.

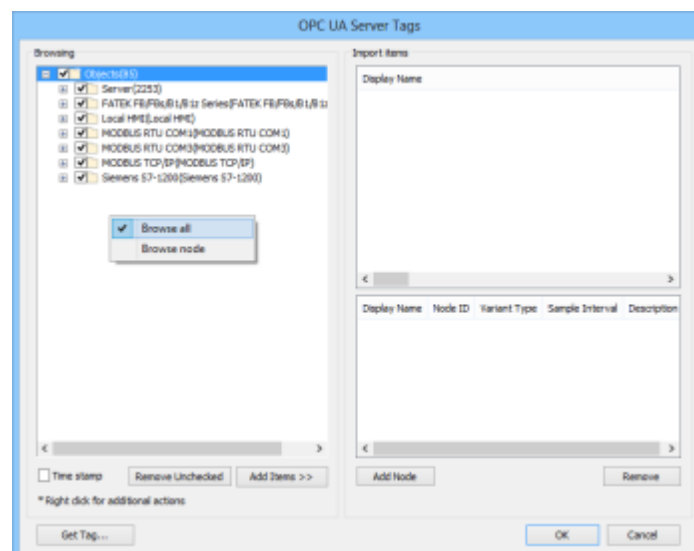
**Add Items:** Add the selected tag to the project

**Add Node:** Add tag manually. \*Note

**Remove:** Remove tag

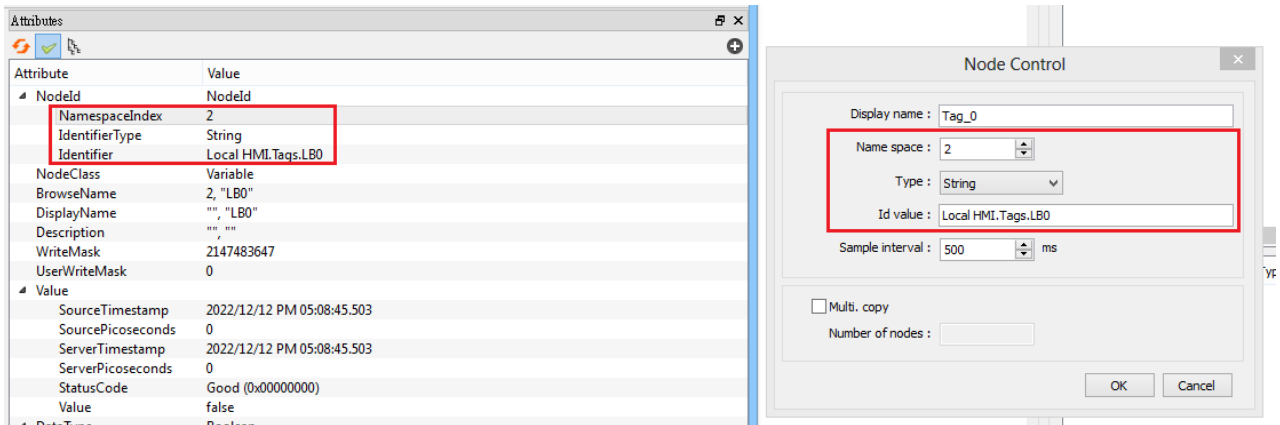
**Browse all:** Browse all tags, if not checked, only the top layer will be browsed

**Browse node:** Browse for single-layer nodes

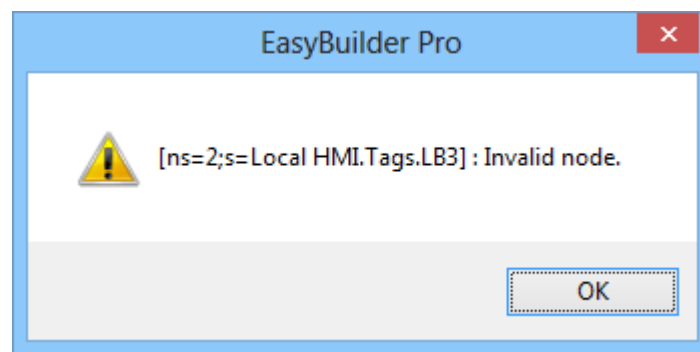


**Note:**

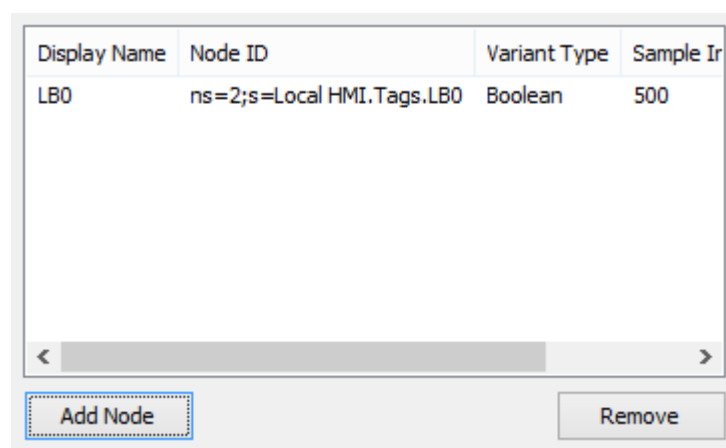
Manual AddNode needs to pay attention to the correctness of the parameters. The following figure shows the corresponding settings of UaExpert and EasyBuilderPro.



After pressing **[OK]**, it will check whether the node is valid, and the error will display a message.



Add Node successfully passed the inspection, you can see it on the list.



## Wiring Diagram:

### Ethernet cable:

