

Rockwell Micro850 - Free Tag Names

Supported Series: Rockwell Micro820/850

Website: <http://www.ab.com>

HMI Setting:

Parameters	Recommended	Options	Notes
PLC type	Rockwell Micro850 - Free Tag Names		
PLC I/F	RS232		
Baud rate	38400	1200 ~ 38400	
Data bits	8		
Parity	None	None,Even,Odd	
Stop bits	1		
PLC sta. no.	1	0 ~ 254	

PLC Setting:

Controller - Serial Port

Common Settings

Driver: CIP Serial ▼

Baud Rate: 38400 ▼

Parity: None ▼

Station Address: 1 ▲▼

Protocol Control

DF1 Mode: DF1 Full-Duplex

Control Line: No Handshake

Error Detection: CRC ▼

Embedded Responses: After One Received ▼

Duplicate Packet Detection

ACK Timeout (x20ms): 50 ENQ Retries: 3

NAK Retries: 3 Transmit Retries: 3

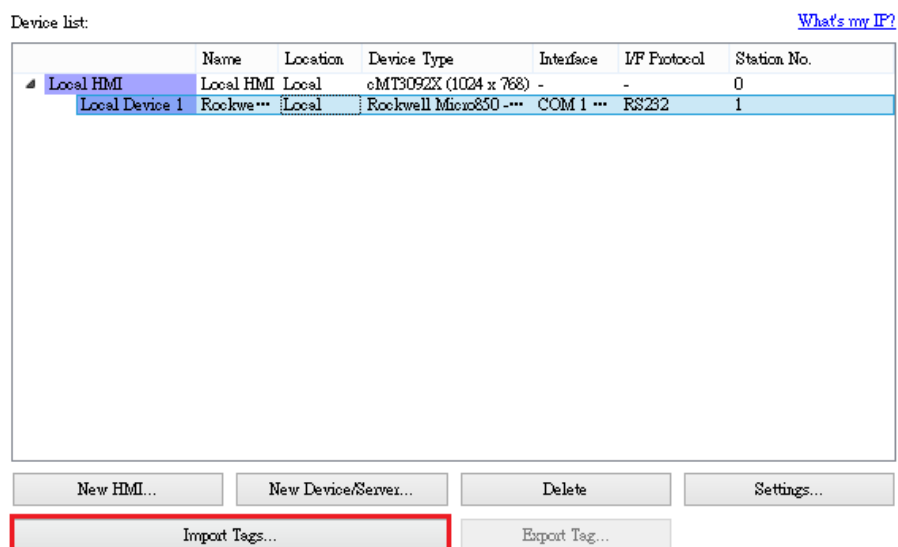
Support Device Type:

Data type	EasyBuilder data format	Memo
Bool	bit	
Byte	16-bit BCD, Hex, Binary, Unsigned	8-bit
SInt	16-bit BCD, Hex, Binary, Signed	8-bit
USInt	16-bit BCD, Hex, Binary, Unsigned	8-bit
Word	16-bit BCD, Hex, Binary, Unsigned	16-bit
Int	16-bit BCD, Hex, Binary, Signed	16-bit
UInt	16-bit BCD, Hex, Binary, Unsigned	16-bit
DWord	32-bit BCD, Hex, Binary, Unsigned	32-bit
DInt	32-bit BCD, Hex, Binary, Signed	32-bit
Real	32-bit Float	32-bit
UDInt	32-bit BCD, Hex, Binary, Unsigned	32-bit
LInt	64-bit Signed	64-bit
String	ASCII Object	Length=word

Note: EBPro V6.03.02 or later supports 64 bits data type (**cMT Series only**), but please note that the address limit range is 48 bits in maximum.

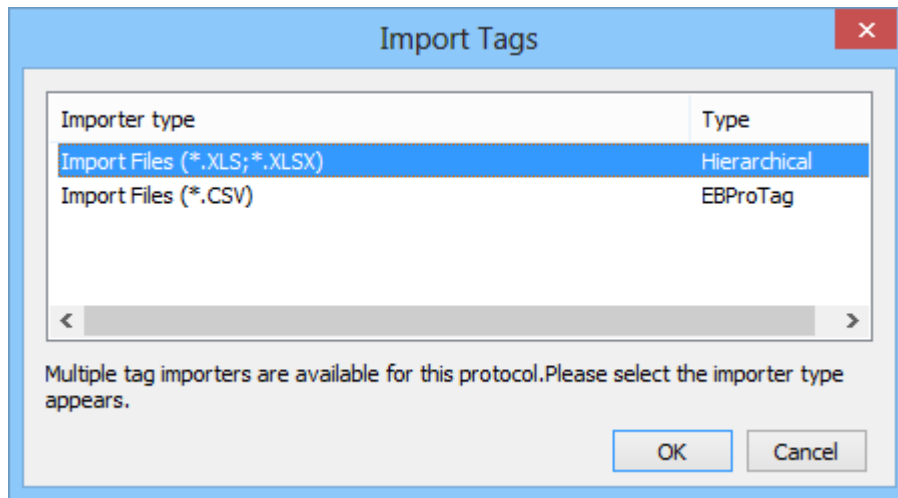
Import Tags:

1. System Parameter Settings -> Device -> Select Driver -> Import Tags

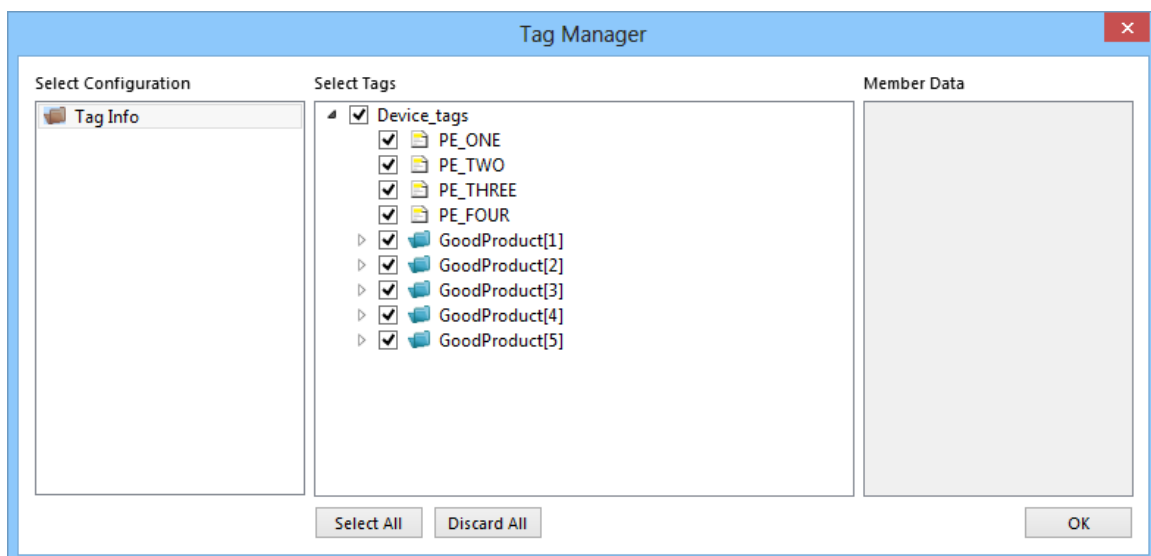


2. Import Files (*.XLS, *.XLSX): Rockwell Soft Export Tag File

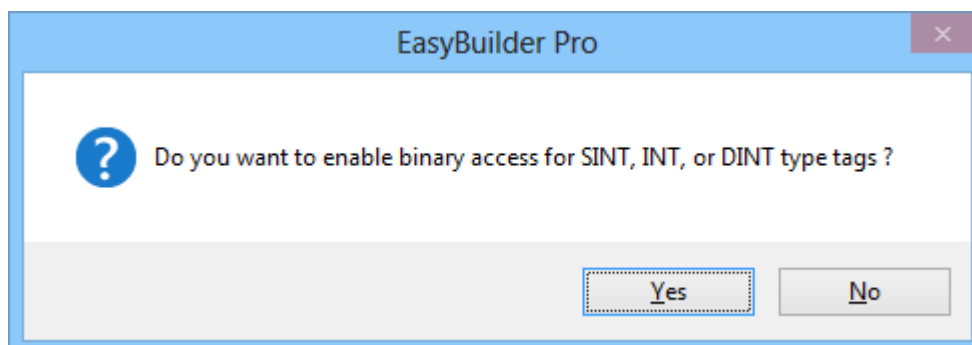
Import Files (*.CSV): EasyBuilderPro Export Tag File



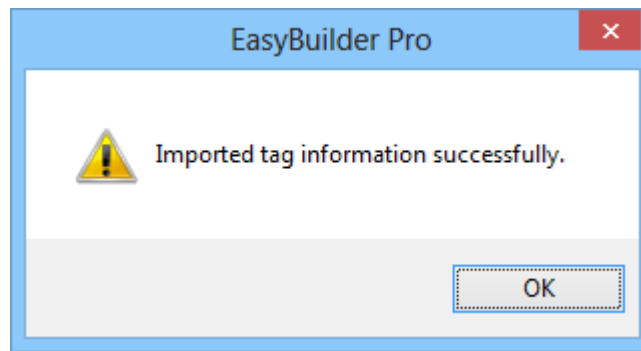
3. Select the imported tag, then press **[OK]**.



4. SINT, INT or DINT type tag choose whether to enable binary access.



5. Import tag information successfully.



Note1: This driver allows you to select multiple spreadsheets xls (or xlsx) at once when you import tags in EasyBuilderPro. In this way, you can import your Global variables and Program variables at once.

Note2: The spreadsheet exported from CCW won't include I/O tags. If you need to import I/O tags, you can take a copy of your exported spreadsheet, delete the existing tags, and manually type in the tag names and data types of the I/O tags, which are located in your Global variables within CCW.

Wiring Diagram:

Diagram 1

RS-232

The serial port pin assignments may vary between HMI models, please click the following link for more information.

