

## USB Device

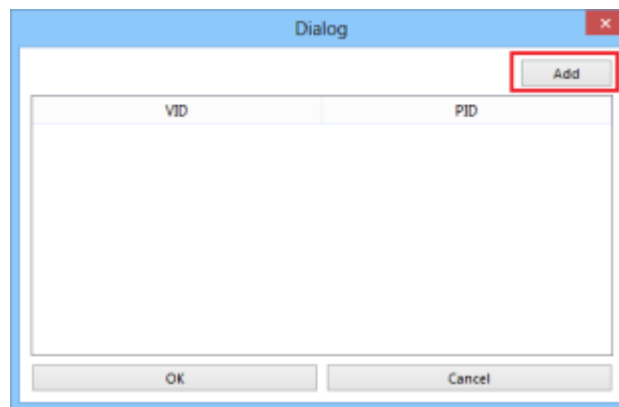
Devices that support bulk and interrupt communication modes

### HMI Settings:

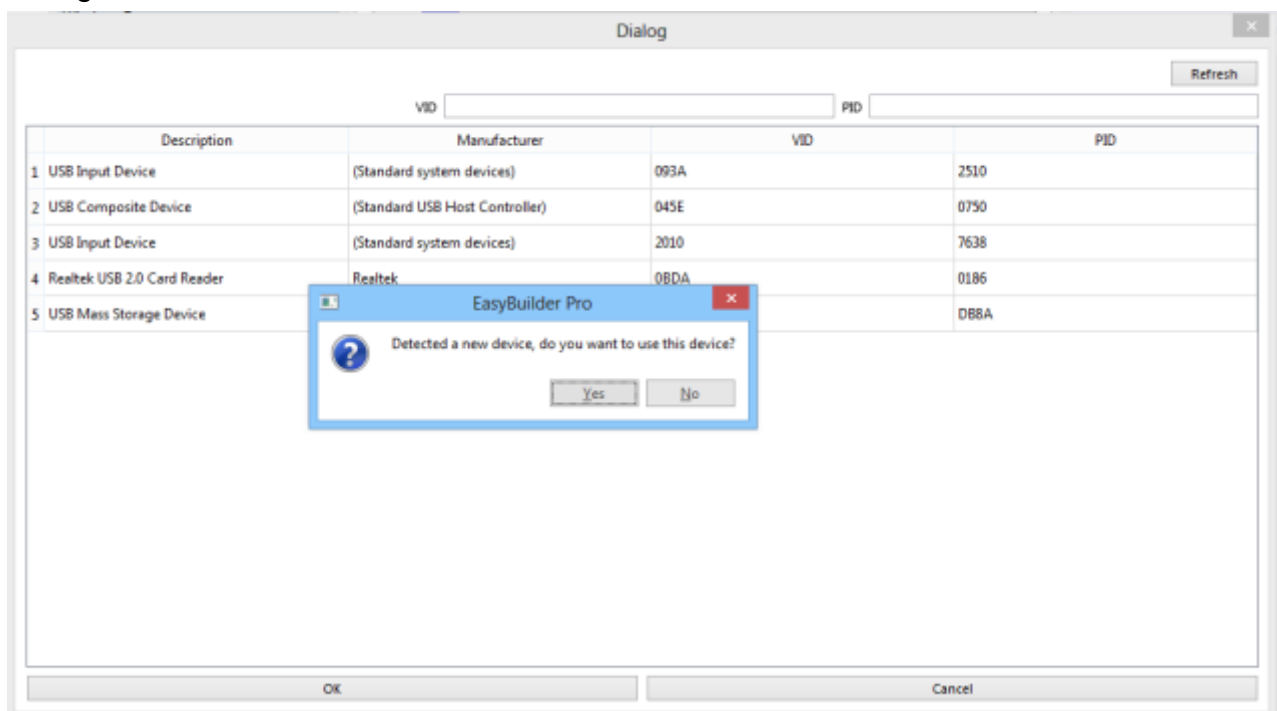
| Parameters | Recommended | Options | Notes |
|------------|-------------|---------|-------|
| PLC type   | USB Device  |         |       |
| PLC I/F    | USB         |         |       |

### Tag Manager:

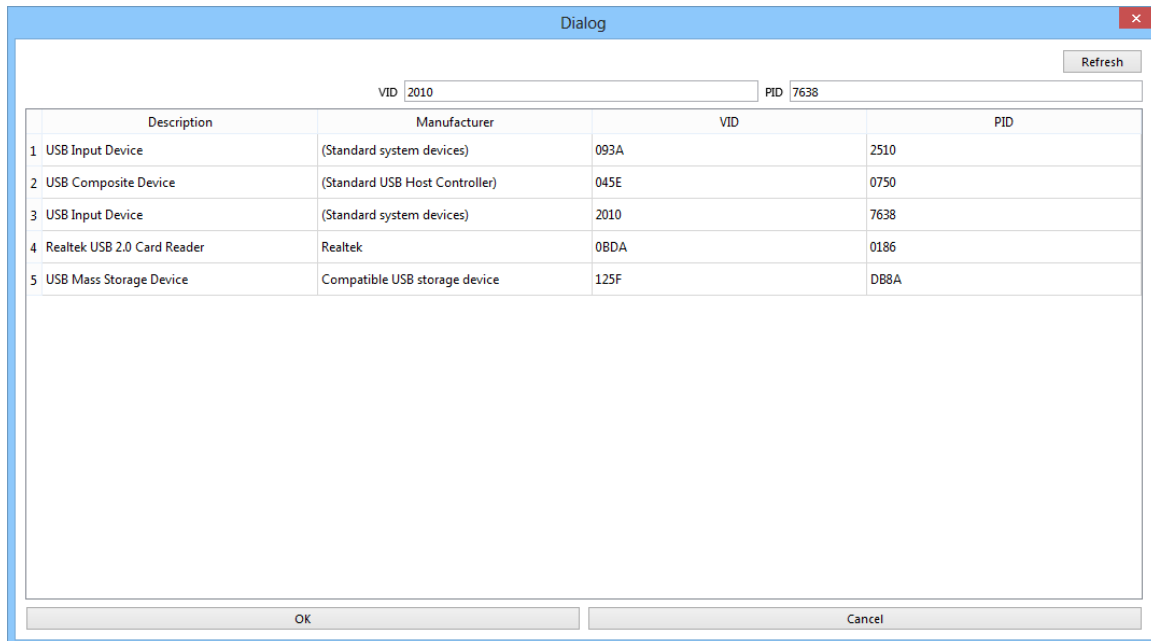
1. Click **[Add]** to join the device.



2. Connect the USB Device to the PC and it will automatically detect and pop up a dialogue window.



3. After selecting **[Yes]** to join the device, it will automatically fill in the **[VID]** and **[PID]** of the device, click OK



Dialog

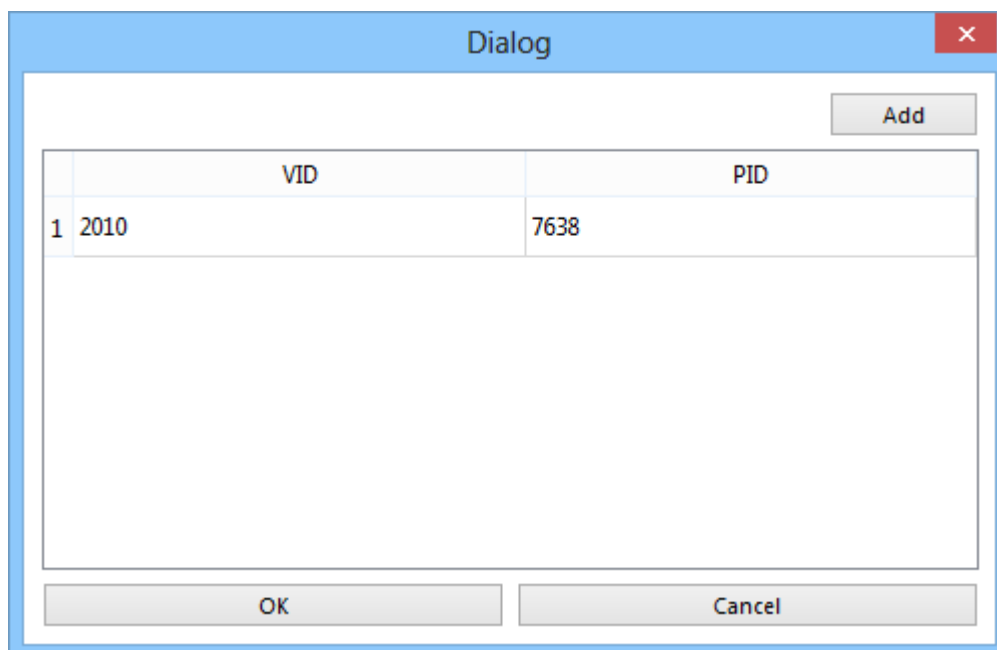
Refresh

VID 2010 PID 7638

|   | Description                 | Manufacturer                   | VID  | PID  |
|---|-----------------------------|--------------------------------|------|------|
| 1 | USB Input Device            | (Standard system devices)      | 093A | 2510 |
| 2 | USB Composite Device        | (Standard USB Host Controller) | 045E | 0750 |
| 3 | USB Input Device            | (Standard system devices)      | 2010 | 7638 |
| 4 | Realtek USB 2.0 Card Reader | Realtek                        | 0BDA | 0186 |
| 5 | USB Mass Storage Device     | Compatible USB storage device  | 125F | DB8A |

OK Cancel

4. The device will appear in the list, press **[OK]** to complete adding the device



Dialog

Add

|   | VID  | PID  |
|---|------|------|
| 1 | 2010 | 7638 |

OK Cancel



### DriverCapability:

| Bit   | Describe   |
|-------|--|
| Bit 0 | The device supports the basic functions of the USB driver. |
| Bit 1 | Device supports hot plug detection.                        |

### Status:

| Status | Describe  |
|--------|---|
| 0      | The device is ready                                   |
| 1      | The device is offline or cannot be found in the list. |
| 2      | Device hot-swap                                       |
| 3      | Device hot-swap insertion                             |
| 4      | The device could not be initialized successfully      |

### Request\_result: communication request status.

| Status | Describe                      |
|--------|-------------------------------|
| 0      | Read successfully             |
| 1      | Illegal request               |
| 2      | Request failed                |
| 3      | Waiting for device to respond |
| 4      | Request device response       |
| 5      | Request timed out             |

### Other Address Description:

| Status                  | Describe                             |
|-------------------------|--------------------------------------|
| Time_interval           | Read time period (unit: millisecond) |
| Last_packaged_timestamp | Timestamp of last data read          |
| Last_packaged_length    | The length of the last data read     |