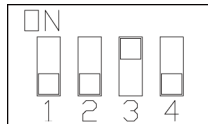


## eMT3070A Firmware Upgrade with SD Card

Upgrade steps:

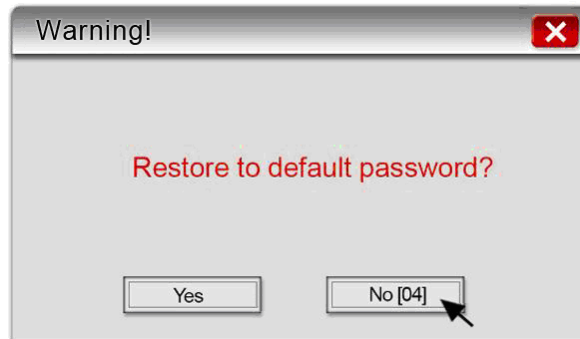
1. Unzip OS Image to firmware\_empt.bin and copy to SD card.
2. Insert SD card to HMI.
3. Turn ON Dip Switch #3.



4. Power ON HMI and wait for 1 minute for updating OS Image.
5. After updating, turn ON Dip Switch #1 and then Power ON HMI again. Wait for 1 minute to finish the process, and then start calibration mode.



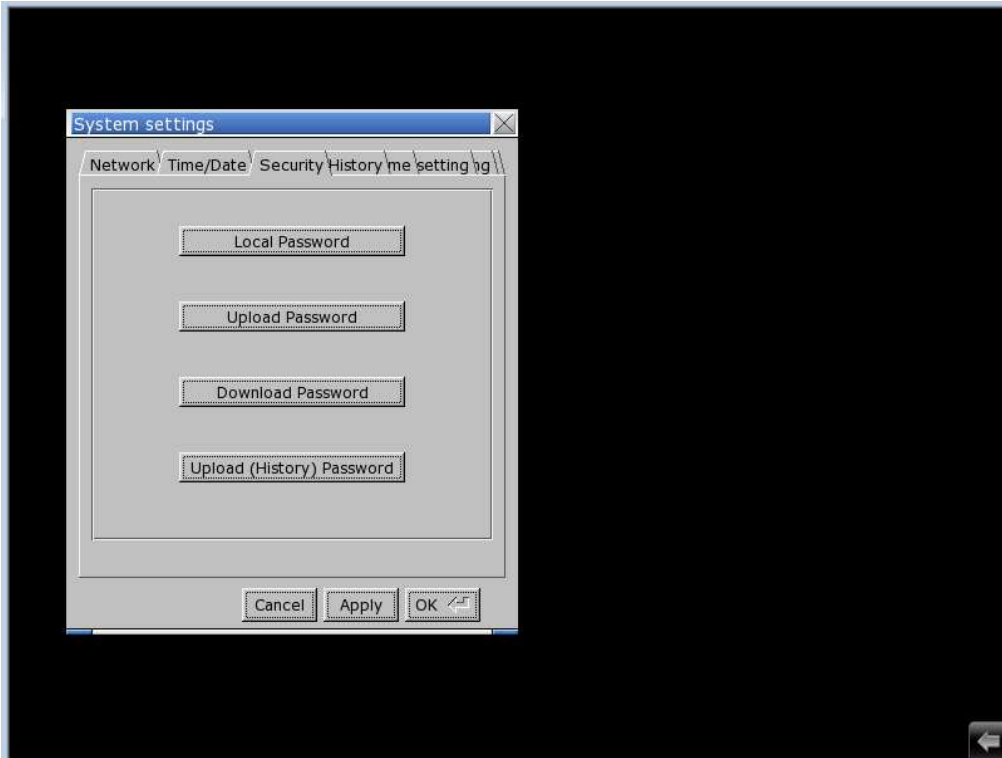
6. eMT3000 will jump to "Touch Adjust" (Touch screen calibration mode), after calibration, the pop-up window appears as below.



User will be inquired if restoring the system password to the default value.

Note:

- When the reset action is taken, project and saved data in the HMI will all be cleared, and please reset the download and upload password using system setting bar.



7. Power ON HMI again.
8. Download project to HMI.