

## DELTA DVP 50MC Series (Modbus) (Ethernet)

Supported Series: DELTA DVP 50MC Series.

Website: <http://www.deltadrivers.com>

### HMI Setting:

| Parameters | Recommended                               | Options | Notes |
|------------|---|---------|-------|
| PLC type   | DELTA DVP 50MC Series (Modbus) (Ethernet) |         |       |
| PLC I/F    | Ethernet                                  |         |       |
| Port no.   | 502                                       |         |       |

### Device Address:

| Bit/Word | Device type | Format   | Range       | Memo |
|----------|-------------|----------|-------------|------|
| B        | IX          | DDDo     | 0 ~ 1277    |      |
| B        | QX          | DDDo     | 0 ~ 1277    |      |
| B        | MX          | DDDDDDDo | 0 ~ 1310717 |      |
| W        | IW          | DD       | 0 ~ 63      |      |
| DW       | ID          | DD       | 0 ~ 31      |      |
| W        | QW          | DD       | 0 ~ 63      |      |
| DW       | Q           | DD       | 0 ~ 31      |      |
| W        | MW          | DDDDD    | 0 ~ 32767   |      |
| DW       | MD          | DDDDD    | 0 ~ 16383   |      |

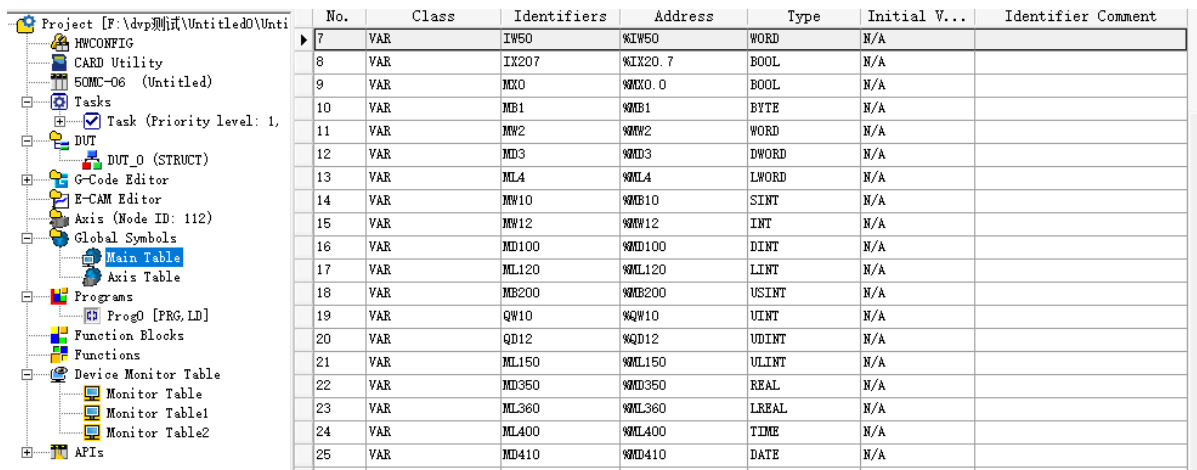
### Support Device Type:

| Data type | EasyBuilder data format           | Memo   |
|-----------|-----------------------------------|--------|
| Bool      | bit                               |        |
| Word      | 16-bit BCD, Hex, Binary, Unsigned | 16-bit |
| Int       | 16-bit BCD, Hex, Binary, Signed   | 16-bit |
| UInt      | 16-bit BCD, Hex, Binary, Unsigned | 16-bit |
| DWord     | 32-bit BCD, Hex, Binary, Unsigned | 32-bit |
| DInt      | 32-bit BCD, Hex, Binary, Signed   | 32-bit |
| Real      | 32-bit Float                      | 32-bit |
| UDInt     | 32-bit BCD, Hex, Binary, Unsigned | 32-bit |
| LWord     | 64-bit Unsigned                   | 64-bit |

| Data type | EasyBuilder data format | Memo   |
|-----------|-------------------------|--------|
| LInt      | 64-bit Signed           | 64-bit |
| ULInt     | 64-bit Unsigned         | 64-bit |
| LReal     | 64-bit Double           | 64-bit |

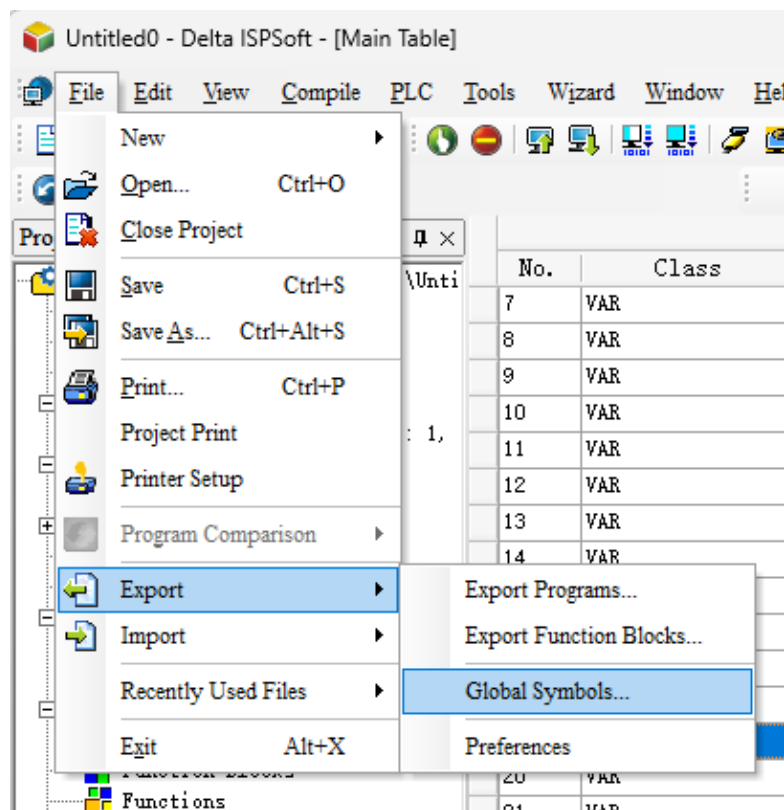
## Import Tags

1. [Main Table] -> [Global Symbols] creates address related information.

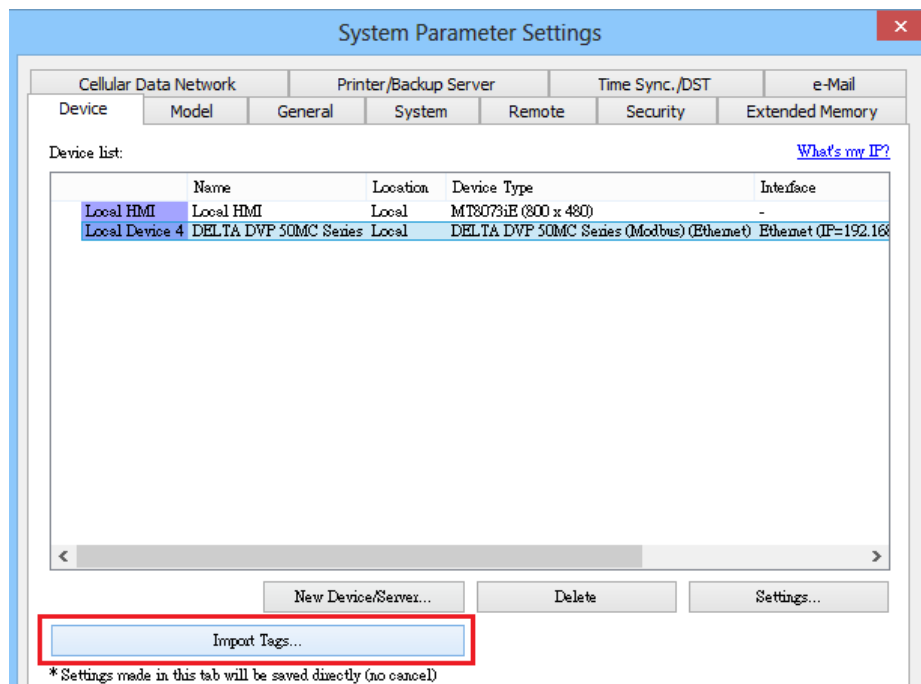


| No. | Class | Identifiers | Address | Type  | Initial V... | Identifier Comment |
|-----|-------|-------------|---------|-------|--------------|--------------------|
| 7   | VAR   | IW50        | %IW50   | WORD  | N/A          |                    |
| 8   | VAR   | IX207       | %IX20.7 | BOOL  | N/A          |                    |
| 9   | VAR   | MX0         | %MX0.0  | BOOL  | N/A          |                    |
| 10  | VAR   | MB1         | %MB1    | BYTE  | N/A          |                    |
| 11  | VAR   | MW2         | %MW2    | WORD  | N/A          |                    |
| 12  | VAR   | MD3         | %MD3    | DWORD | N/A          |                    |
| 13  | VAR   | ML4         | %ML4    | LWORD | N/A          |                    |
| 14  | VAR   | MW10        | %MW10   | SINT  | N/A          |                    |
| 15  | VAR   | MW12        | %MW12   | INT   | N/A          |                    |
| 16  | VAR   | MD100       | %MD100  | DINT  | N/A          |                    |
| 17  | VAR   | ML120       | %ML120  | LINT  | N/A          |                    |
| 18  | VAR   | MR200       | %MR200  | USINT | N/A          |                    |
| 19  | VAR   | QW10        | %QW10   | UINT  | N/A          |                    |
| 20  | VAR   | QD12        | %QD12   | UDINT | N/A          |                    |
| 21  | VAR   | ML150       | %ML150  | ULINT | N/A          |                    |
| 22  | VAR   | MD350       | %MD350  | REAL  | N/A          |                    |
| 23  | VAR   | ML360       | %ML360  | LREAL | N/A          |                    |
| 24  | VAR   | ML400       | %ML400  | TIME  | N/A          |                    |
| 25  | VAR   | MD410       | %MD410  | DATE  | N/A          |                    |

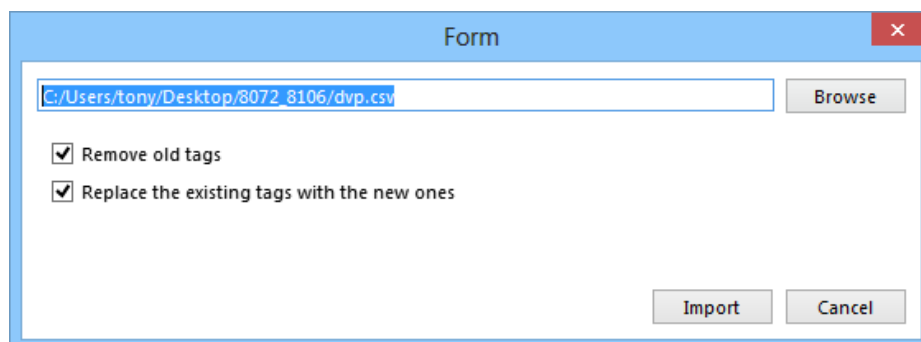
2. [File] -> [Export] -> [Global Symbols]



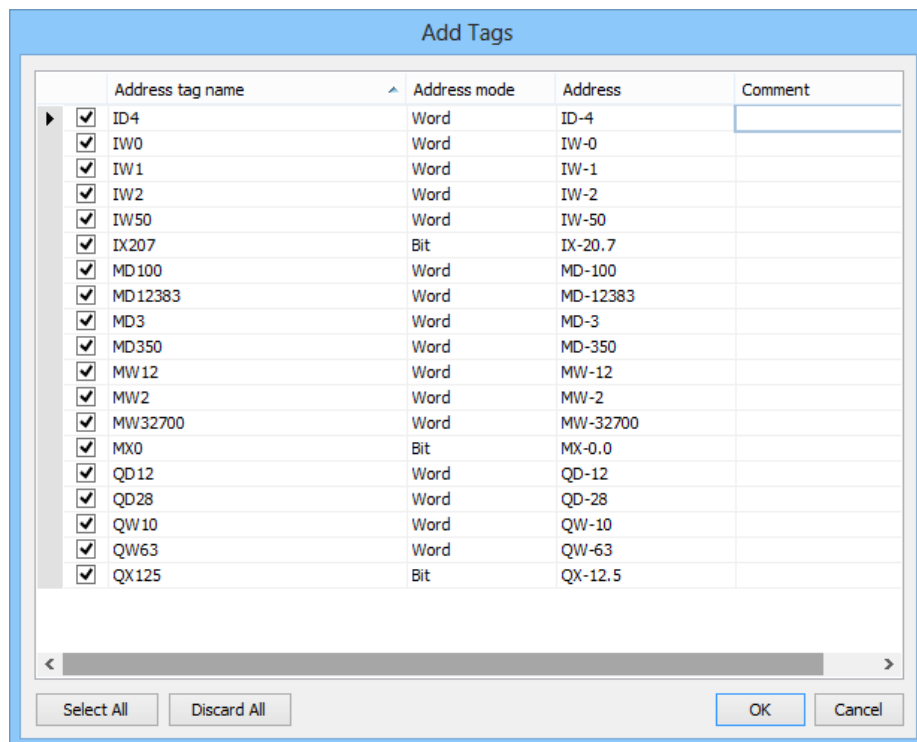
3. After adding the driver settings, click **[Import Tags]** and select the imported tag file.



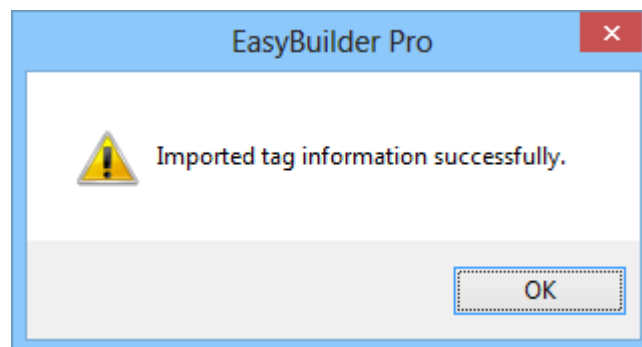
4. Choose to remove or keep the old tags and press **[Import]**.



5. Check the tags you want to import and click **[OK]** to import them.



6. Display a message that the import was successful



## Wiring Diagram:

Ethernet cable:

