

ODVA EtherNet/IP Server (Explicit Messaging)

HMI Setting:

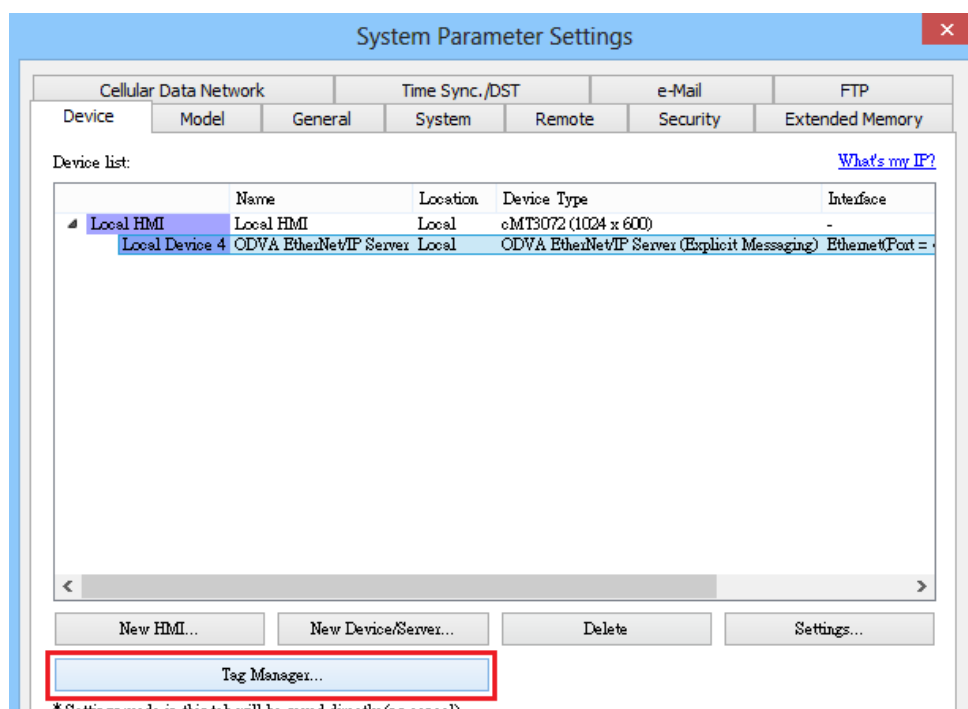
Parameters	Recommended	Options	Notes
PLC type	ODVA EtherNet/IP Server (Explicit Messaging)		
PLC I/F	Ethernet		
Port no.	44818		

Note1: Support cMT series only

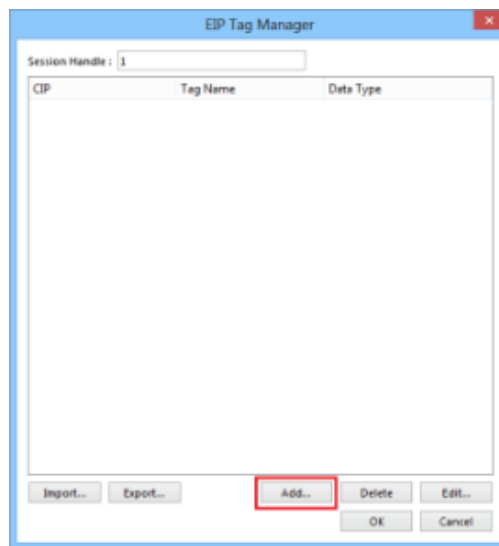
Note2: Only supports unconnected explicit messaging (via TCP) connection

Tag Manager:

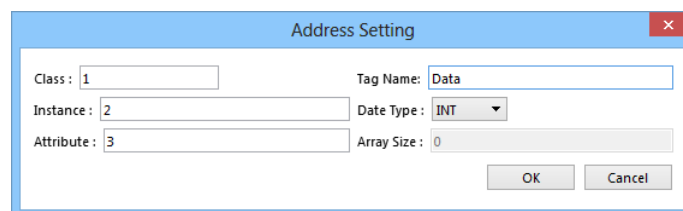
Step1: System Parameter Settings -> Device -> Tag Manager



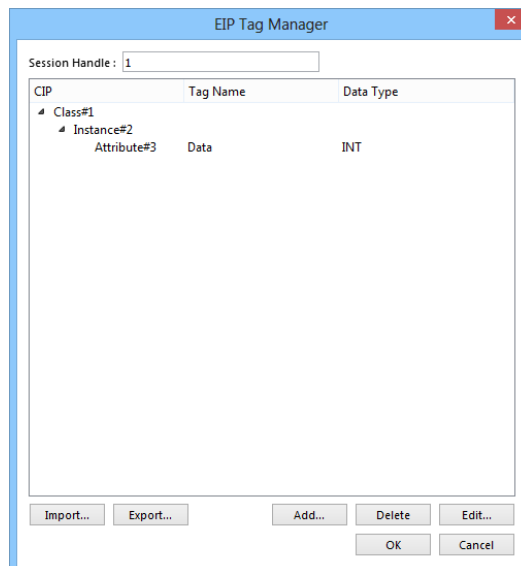
Step2: EIP Tag Manager -> Add



Step3: Address Setting -> OK



Step4: Press [OK] to save the settings.



[Session Handle]

The session handle is generated by the target device and returned to the initiator of the session. This handle will be used for subsequent communication with the target device. Please set a different session handle value (range: 1 ~ 65535) for each individual when an EIP client is connected to more than one EIP explicit server on the network.

Support Device Type:

Data type	EasyBuilder data format	Memo
BOOL	bit	
SINT	16-bit BCD, Hex, Binary, Signed	8-bit
USINT	16-bit BCD, Hex, Binary, Unsigned	8-bit
INT	16-bit BCD, Hex, Binary, Signed	16-bit
UINT	16-bit BCD, Hex, Binary, Unsigned	16-bit
DINT	32-bit BCD, Hex, Binary, Signed	32-bit
UDINT	32-bit BCD, Hex, Binary, Unsigned	32-bit
STRING	Word array for ASCII input and display	

* Only the string data type supports the array size.

Address Setting

Class : 1

Tag Name: ModelName

Instance : 2

Date Type : STRING

Attribute : 3

Array Size : 32

OK

Cancel

Wiring Diagram:

Ethernet cable:

