

## Rockwell DH485

Supported Series: Rockwell MicroLogix 1000, 1100, 1200, 1400, 1500, SLC 5/01, 5/02, 5/03, 5/04, 5/05.

Website: <https://www.rockwellautomation.com/>

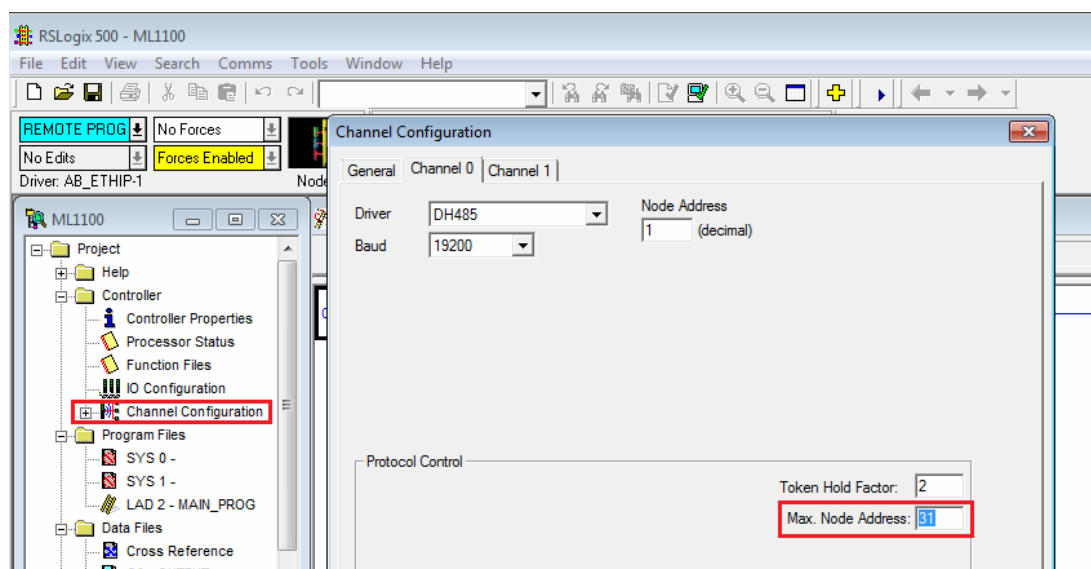
### HMI Setting:

Parameters	Recommended	Options	Notes
PLC type	Rockwell DH485		
PLC I/F	RS485 2W	RS232	
Baud rate	19200	9600, 19200	
Data bits	8		
Parity	Even		
Stop bits	1		
HMI sta. no.	0	2	
PLC sta. no.	1	1-31	

Online simulation	YES
Extend address mode	NO

### PLC Setting:

Communication mode	DH485 protocol 19200 (default) Set the Max. Node Address to the number of PLCs in use.
--------------------	---

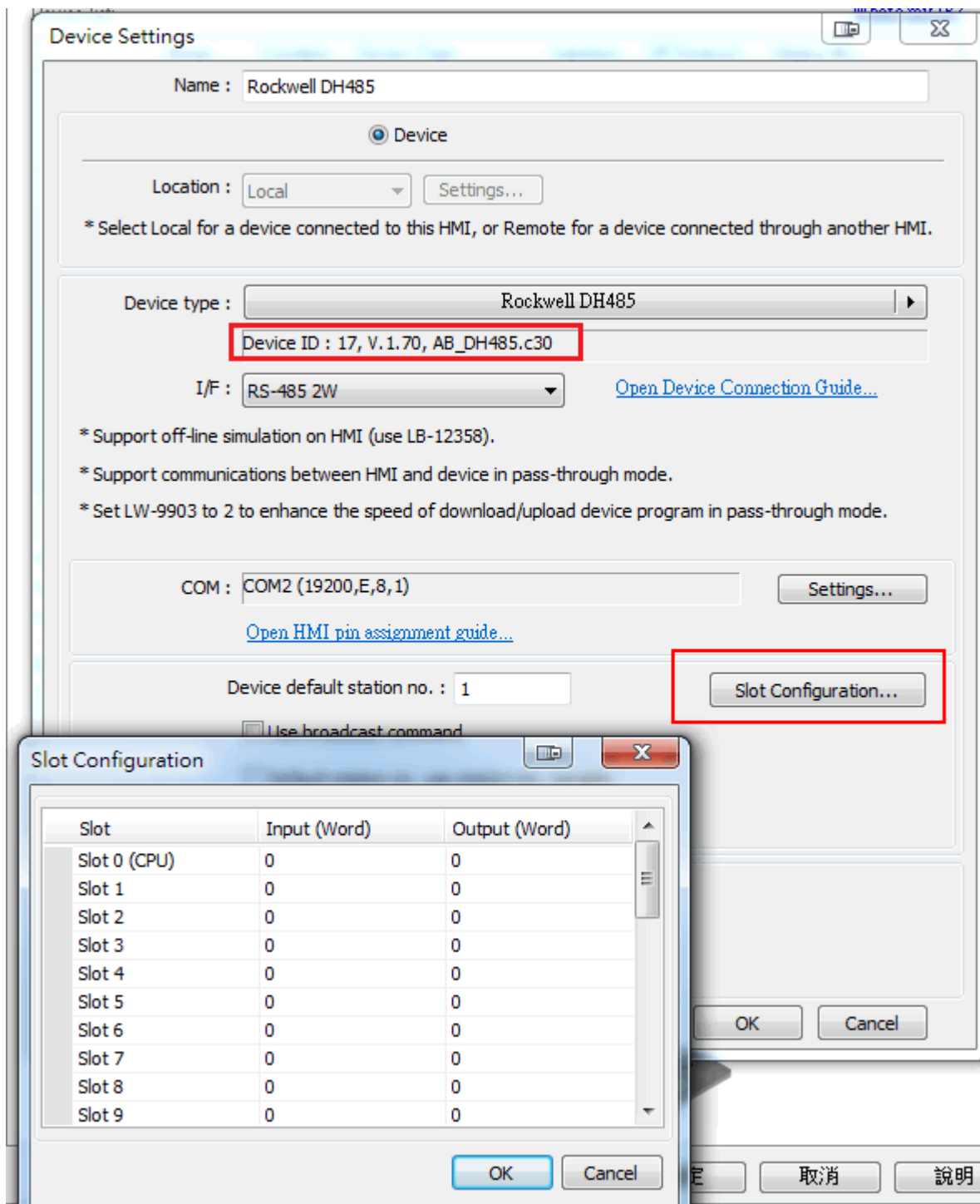


## Device Address:

Bit/Word	Device	Format	Range	Memo
B	I1	DDDdd	0 ~ 25515	Input (I)
B	O0	DDDdd	0 ~ 25515	Output (O)
B	I1n_Bit	SSEEd	0 ~ 303115	SS: slot, EE: sub element, dd:bit
B	O0n_Bit	SSEEd	0 ~ 303115	SS: slot, EE: sub element, dd:bit
B	B3	DDDdd	0 ~ 25515	Bit data file (B3)
B	B10 ~ 13	DDDdd	0 ~ 25515	Bit data file (B10 ~ 13)
B	Bfn	FFFDDDD	0 ~ 25525515	Bit data file (B3, 10 ~ 254)
B	NfnBit	FFFDDDD	0 ~ 25525515	Integer data file bit level (N7,10 ~ 254)
B	S_Bit	DDDdd	0 ~ 25515	Status file
W	I1n	SSEE	0 ~ 3031	SS: slot, EE: sub element
W	O0n	SSEE	0 ~ 3031	SS: slot, EE: sub element
W	T4SV	DDD	0 ~ 255	Timer Preset Value (T4)
W	T4PV	DDD	0 ~ 255	Timer Accumulator Value (T4)
W	C5SV	DDD	0 ~ 255	Counter Preset Value (C5)
W	C5PV	DDD	0 ~ 255	Counter Accumulator Value (C5)
W	TfnSV	FFFDDD	0 ~ 255255	Timer Preset Value
W	TfnPV	FFFDDD	0 ~ 255255	Timer Accumulator Value
W	CfnSV	FFFDDD	0 ~ 255255	Counter Preset Value
W	CfnPV	FFFDDD	0 ~ 255255	Counter Accumulator Value
W	F8	DDD	0 ~ 255	Floating point data file (F8)
W	N7	DDD	0 ~ 255	Integer data file (N7)
W	N10 ~ 15	DDD	0 ~ 255	Integer data file (N10 ~ 15)
W	Nfn	FFFDDD	0 ~ 255255	Integer data file (N7,10 ~ 254)
W	S	DDD	0 ~ 255	Status file

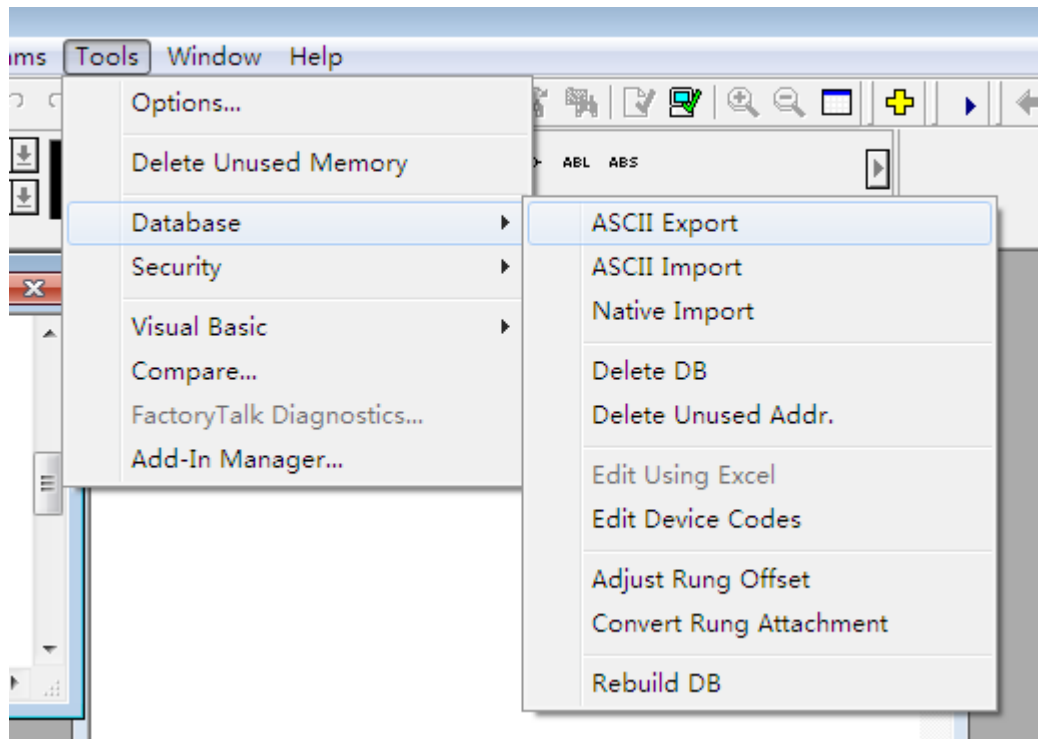
## Slot Configuration:

EBpro V6.07.02 or driver version V1.70 and later do not need to set Slot Configuration, only older versions need to set this item.

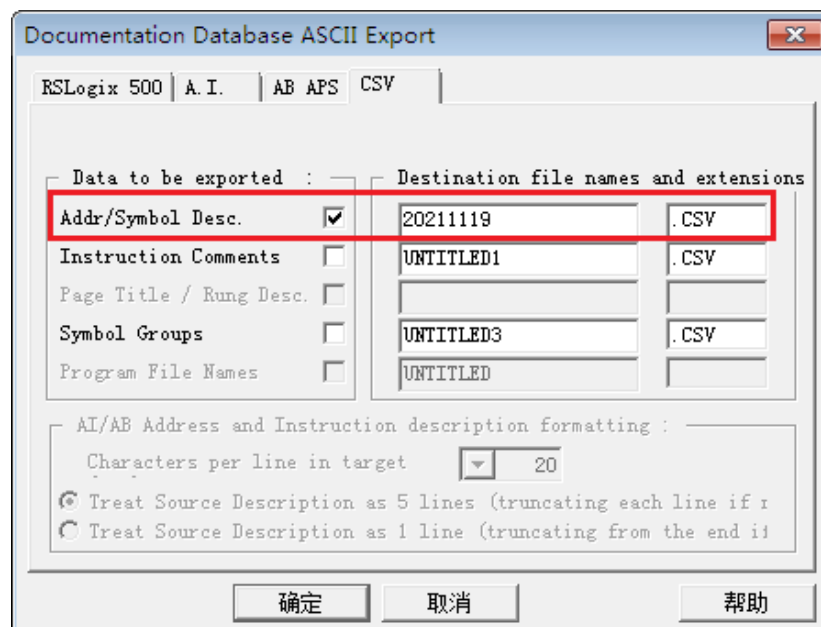


## Import Tags:

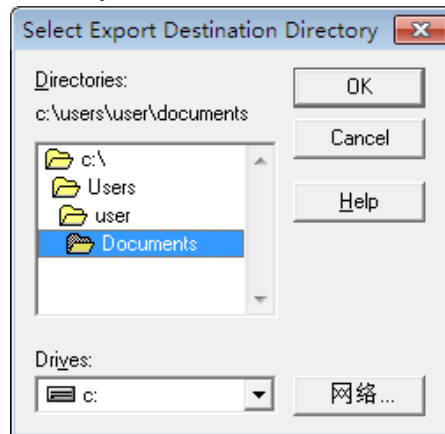
1. In the RSLogix 500 software, Tools -> Database -> ASCII Export



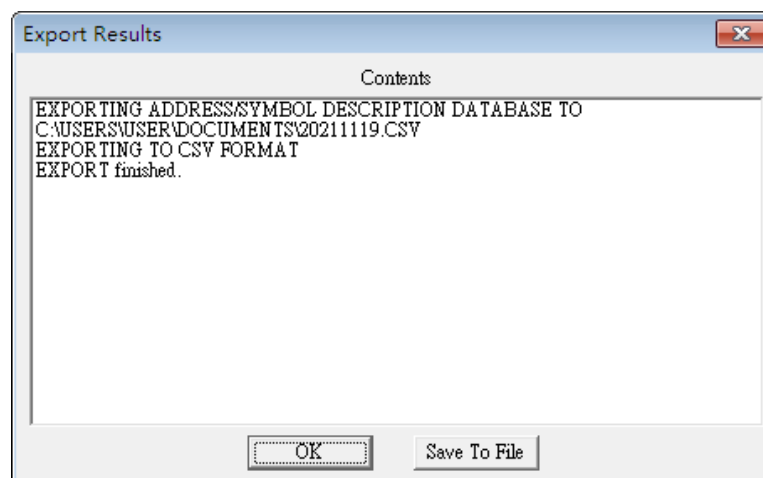
2. Select the csv tab, Add/Symbol Desc. and enter the destination file names.



### 3. Select export destination directory.

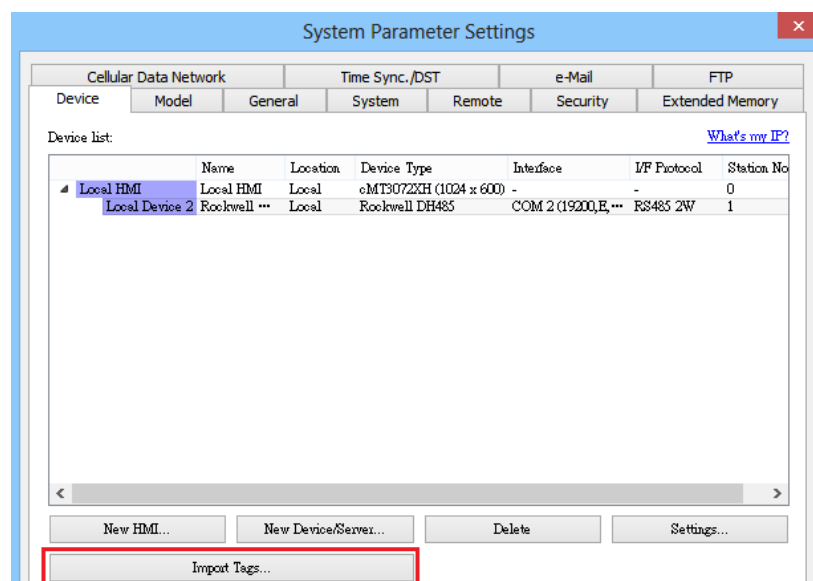


### 4. Export Result

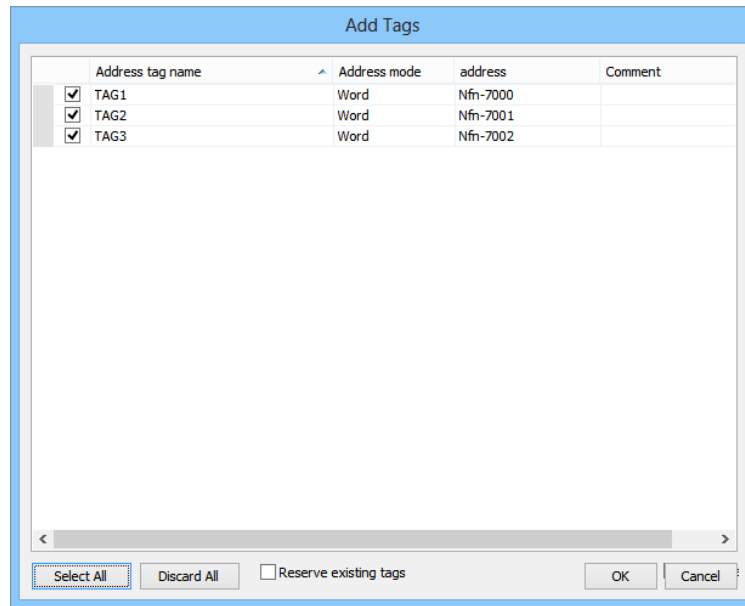


### 5. EasyBuilderPro -> System Parameter -> Device

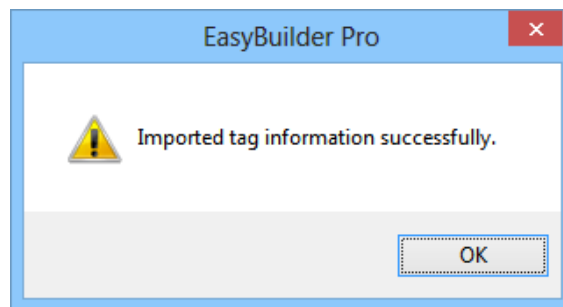
Create **[Rockwell DH485]** driver, click **[Import Tags]**, select the csv file the user wants to import.



6. Select the tag that the user wants to import.



7. Imported tag information successfully.



## Wiring Diagram:

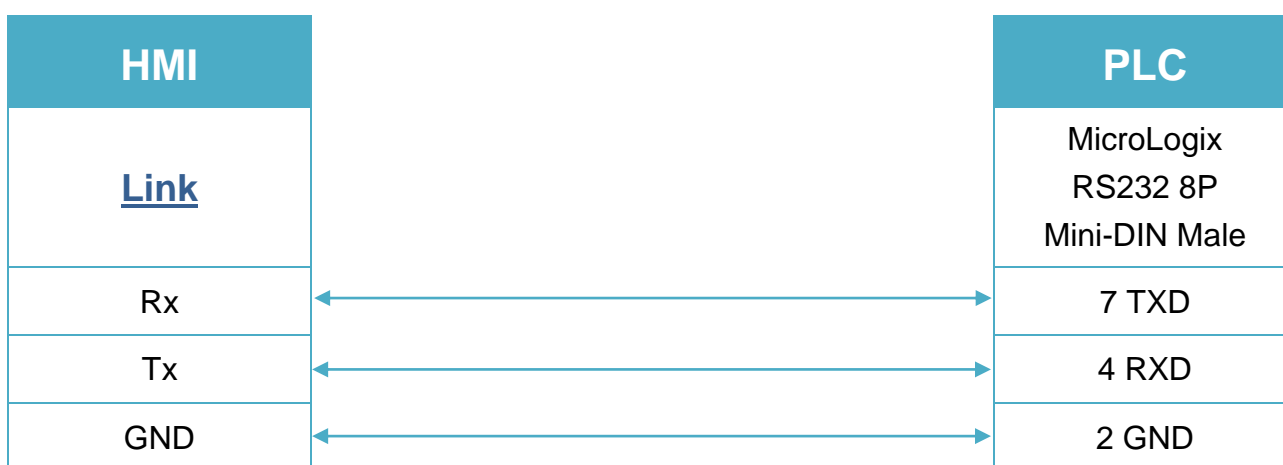
### Diagram 1

**RS-232** (9P D-Sub to 8P Mini-DIN: MicroLogix 1000, 1100, 1200, and 1500 must set DH485 protocol.)

The following is the view from the soldering point of a connector.



The serial port pin assignments may vary between HMI models, please click the following link for more information.



### Diagram 2

**RS-232** (9P D-Sub to 9P D-Sub: SLC5/03, 04, 05 CH0 must set DH485 protocol.)

The serial port pin assignments may vary between HMI models, please click the following link for more information.



**Diagram 3**

**RS-485 2W** (RS-485: SLC500 Fixed type, SLC5/01, 02, 03 CH1.)

HMI can't connect to 1747-AIC peripheral port.

The serial port pin assignments may vary between HMI models, please click the following link for more information.

