

Rockwell Micro850 (Ethernet) - Free Tag Names

Supported Series: Rockwell Micro820/850 Ethernet Module.

Website: <https://www.rockwellautomation.com/>

HMI Setting:

Parameters	Recommended	Options	Notes
PLC type	Rockwell Micro850 (Ethernet) - Free		
PLC I/F	Ethernet		
Port no.	44818		
HMI sta. no.	0		
PLC sta. no.	1		
Protocol (Multiple Service Packet)	Disable (Default)	Disable/Enable	*Note

***Note:** Model: 2080-L50E, 2080-L70E supports Multiple Service Packet Protocol, the firmware version needs to be upgraded to v22 or above.

Support Device Type:

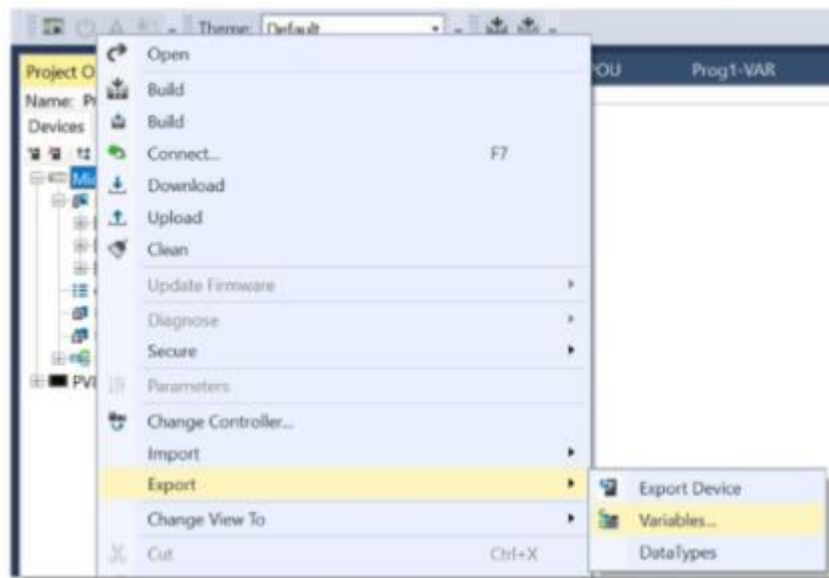
Data type	EasyBuilder data format	Memo
Bool	bit	
Byte	16-bit BCD, Hex, Binary, Unsigned	8-bit
SInt	16-bit BCD, Hex, Binary, Signed	8-bit
USInt	16-bit BCD, Hex, Binary, Unsigned	8-bit
Word	16-bit BCD, Hex, Binary, Unsigned	16-bit
Int	16-bit BCD, Hex, Binary, Signed	16-bit
UInt	16-bit BCD, Hex, Binary, Unsigned	16-bit
DWord	32-bit BCD, Hex, Binary, Unsigned	32-bit
DInt	32-bit BCD, Hex, Binary, Signed	32-bit
Real	32-bit Float	32-bit
UDInt	32-bit BCD, Hex, Binary, Unsigned	32-bit
String	ASCII Object	Length=word
LINT	64-bit Signed	64-bit

Note: EBPPro V6.03.02 or later supports 64 bits data type (**cMT Series only**), but please note that the address limit range is 48 bits in maximum.

Export and Import Tags:

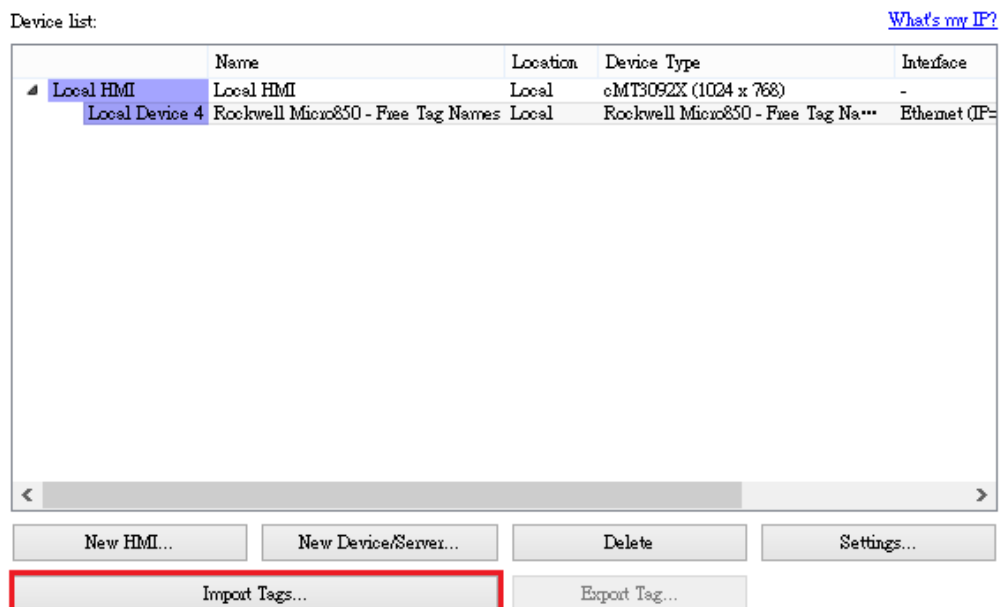
The Connected Components Workbench software terms for Controller Tags are Global Variables and Local Tags are called Local Variables.

1. To export Controller Tags, right-click the Micro800 controller icon in the **Project Organizer** and select **Export -> Variables**. Browse to the desired directory, enter a filename, and click **Save**. The file is saved in the Microsoft Excel format.



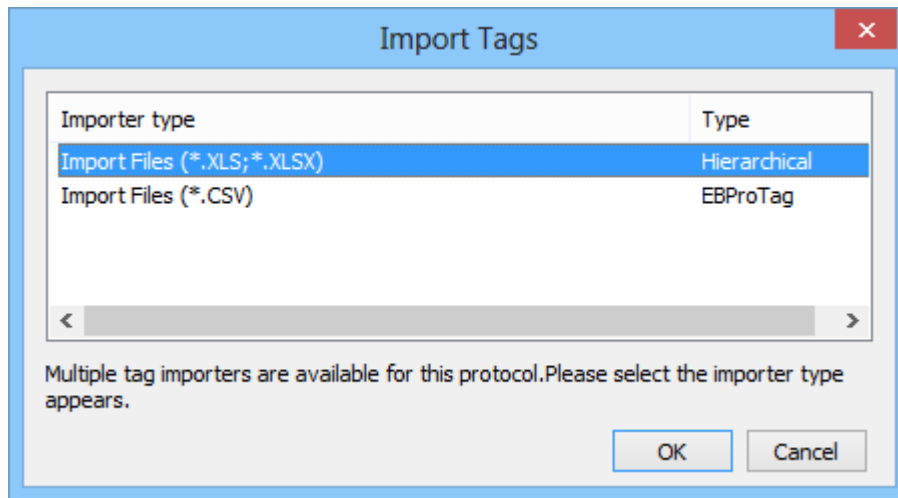
2. Open the EasyBuilder software, enter System Parameter and add a Rockwell Micro850 device.

System Parameter Settings -> Device -> Select Driver -> Import Tags

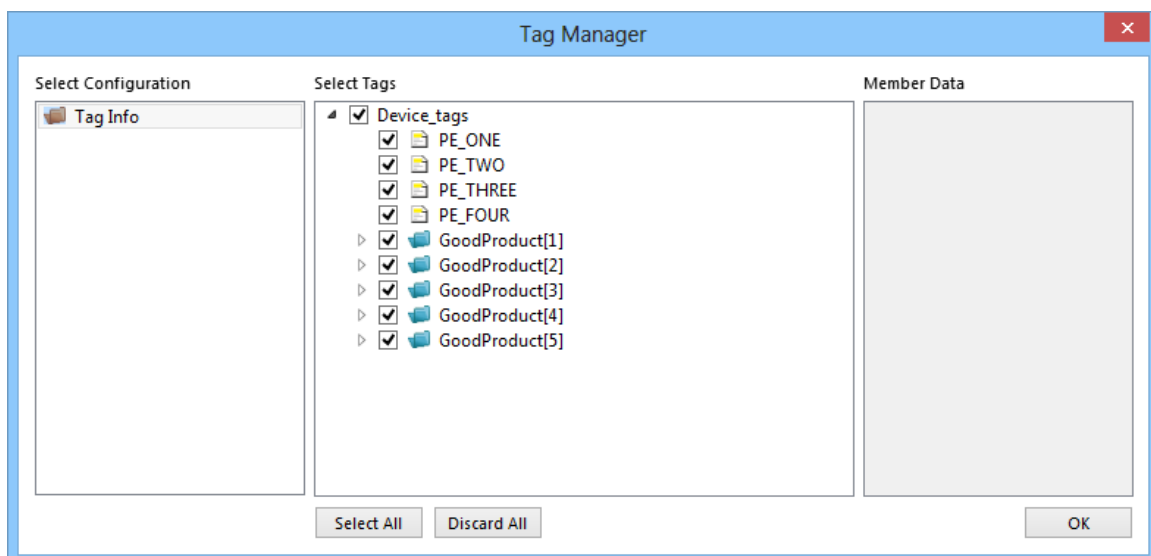


3. Import Files (*.XLS, *.XLSX): Rockwell Soft Export Tag File

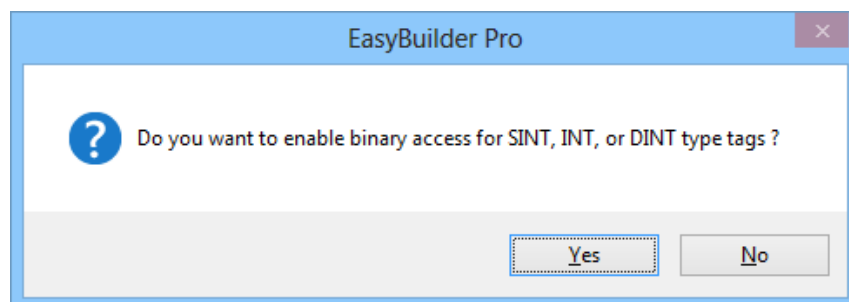
Import Files (*.CSV): EasyBuilderPro Export Tag File



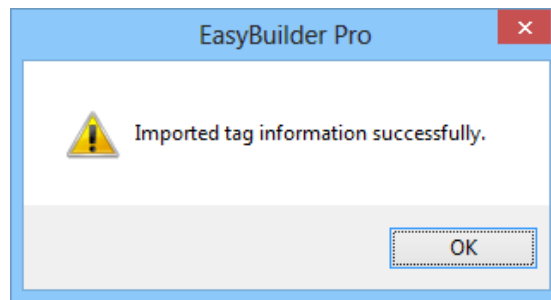
4. Select the imported tag, then press [OK].



5. SINT, INT or DINT type tag choose whether to enable binary access.



6. Import tag information successfully.



Note1: This driver allows you to select multiple spreadsheets xls (or xlsx) at once when you import tags in EasyBuilderPro. In this way, you can import your Global variables and I/O tags at once.

Note2: The spreadsheet exported from CCW won't include I/O tags. If you need to import I/O tags, you can take a copy of your exported spreadsheet, delete the existing tags, and manually type in the tag names and data types of the I/O tags, which are located in your Global variables within CCW.

Wiring Diagram:

Diagram 1

Ethernet cable:

