

Schneider M340/M580 Series (Symbolic Addressing) (Ethernet)

Supported Series: Schneider M340/M580 series (Support firmware v2.70 or later)

Website: <http://www.schleicher-electronic.com>

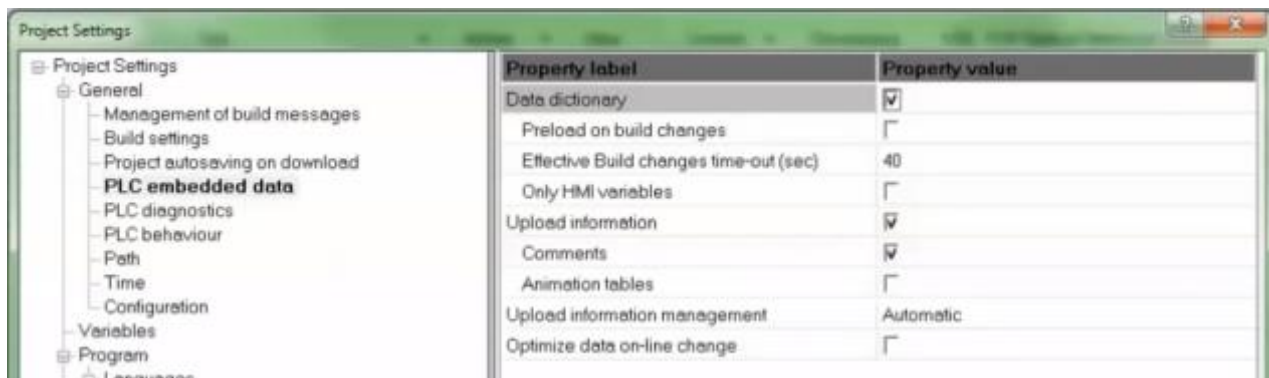
HMI Settings:

Parameters	Recommended	Options	Notes
PLC type	Schneider M340/M580 Series (Symbolic Addressing) (Ethernet)		
PLC I/F	Ethernet		
Port no.	502		

PLC Settings:

Data dictionary	Enable
------------------------	--------

Tools -> Project Settings -> PLC embedded data -> Activate the Data Dictionary



Support Device Type:

Data Type	EasyBuilder data format	Memo
BOOL	bit	*Note1
EBOOL	bit	*Note1
BYTE	16-bit BCD, Hex, Binary, Unsigned	8-bit
DATE	32-bit BCD, Hex, Binary, Unsigned	32-bit
DINT	32-bit BCD, Hex, Binary, Signed	32-bit
DWORD	32-bit BCD, Hex, Binary, Unsigned	32-bit
INT	16-bit BCD, Hex, Binary, Signed	16-bit
REAL	32-bit Float	32-bit
STRING	ASCII input and ASCII display	
TIME	32-bit BCD, Hex, Binary, Unsigned	32-bit
TOD	32-bit BCD, Hex, Binary, Unsigned	32-bit
UDINT	32-bit BCD, Hex, Binary, Unsigned	32-bit
UINT	16-bit BCD, Hex, Binary, Unsigned	16-bit
WORD	16-bit BCD, Hex, Binary, Unsigned	16-bit

***Note1:** Mapping ebool type to external IO may cause unknown communication errors. It is recommended to use bool type for mapping.

Support Tables:

Variables table

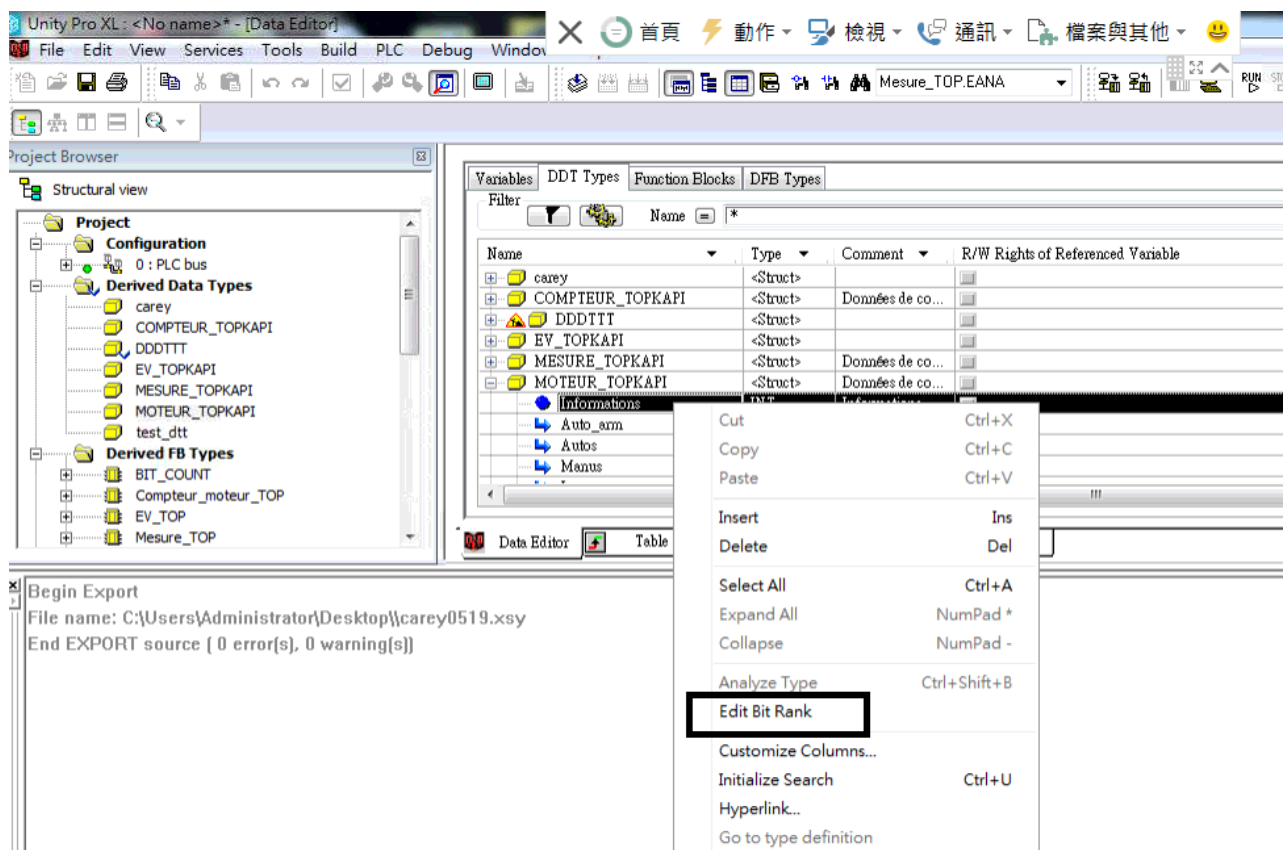
Derived data types table

Structure

Array (Supported one dimension)

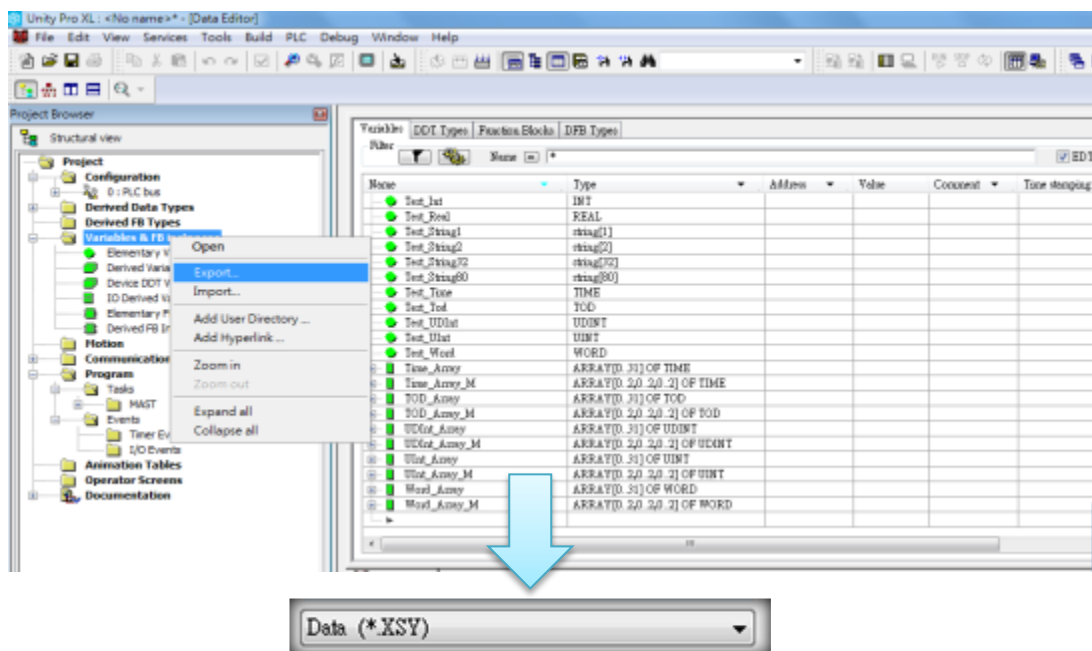
Array data structure

*[Edit Bit Rank] The generated address is not supported.

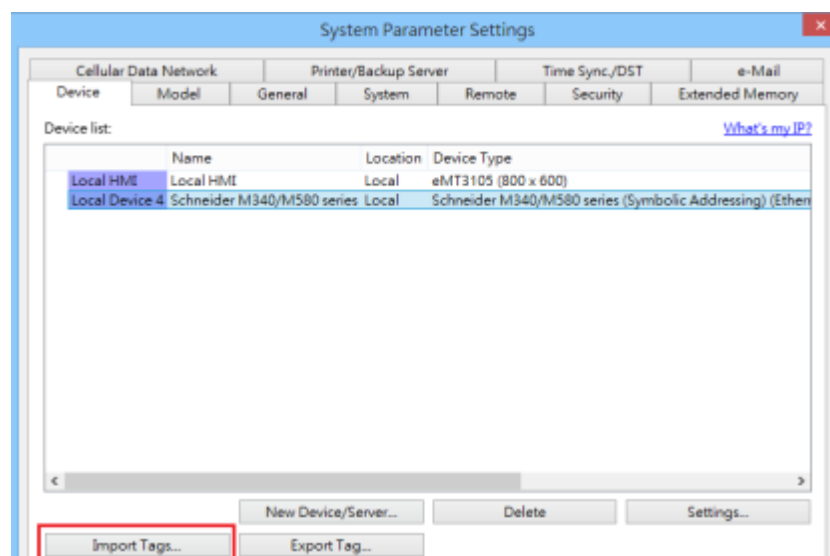


How to Import Tags:

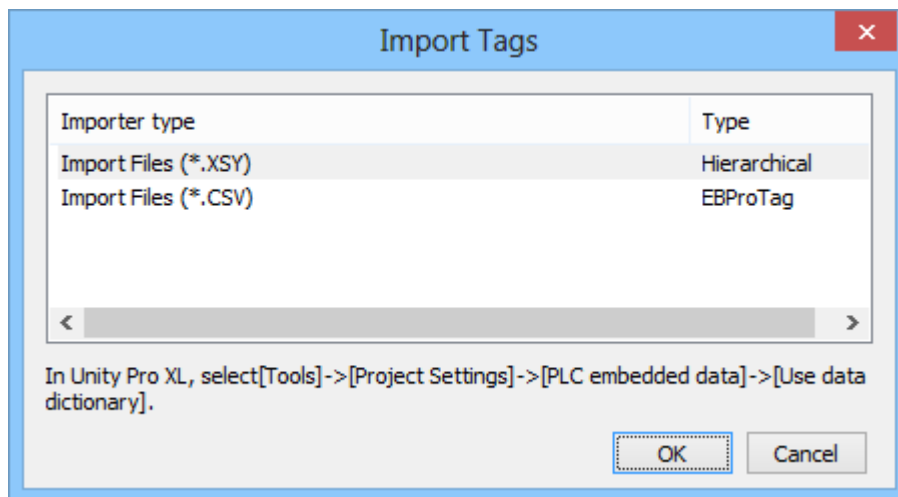
1. Export file (*.XSY) from PLC Software.



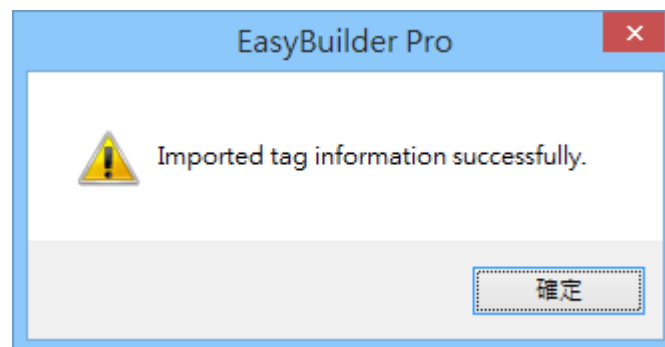
2. Import tags in the driver settings of EasyBuilder Pro.



3. Select the file format to import.



4. Import results dialog.



Wiring Diagram:

Ethernet cable:

