

Siemens S7-200

Supported Series: Siemens S7-200 series PLC
(CPU212/214/215/216/221/222/224/226/226XM)

Website: <http://www.siemens.com/entry/cc/en/>

HMI Setting:

Parameters	Recommen	Options	Notes
PLC type	SIEMENS S7-200		
PLC I/F	RS485 2w	RS485 2w	
Baud rate	9600	9600, 19200, 187.5K	The HMI which has a sticker "MPI187.5" on the rear cover supports 187.5K
Data bits	8	7,8	
Parity	Even	Even, Odd, None	
Stop bits	1	1, 2	
PLC sta. no.	2	1 ~ 126	
Turn around delay	5		
Send ACK delay(ms)	30		

Online simulator	YES	Extend address mode	NO
Broadcast command	NO		

PLC Setting:

Communication	Set station number to 2
---------------	-------------------------

Device Address:

Bit/Word	Device type	Format	Range	Memo
B	I	DDDDo	0 ~ 40957	Input (I)
B	Q	DDDDo	0 ~ 40957	Output (O)
B	M	DDDDo	0 ~ 40957	Bit Memory
B	VW_Bit	DDDDDo	0 ~ 102397	V Memory Bit Address
B	S	DDDDo	0 ~ 40957	SCR
B	SM	DDDDo	0 ~ 40957	Special Memory
B	T_Bit	DDD	0 ~ 255	Timer
B	C_Bit	DDD	0 ~ 255	Counter

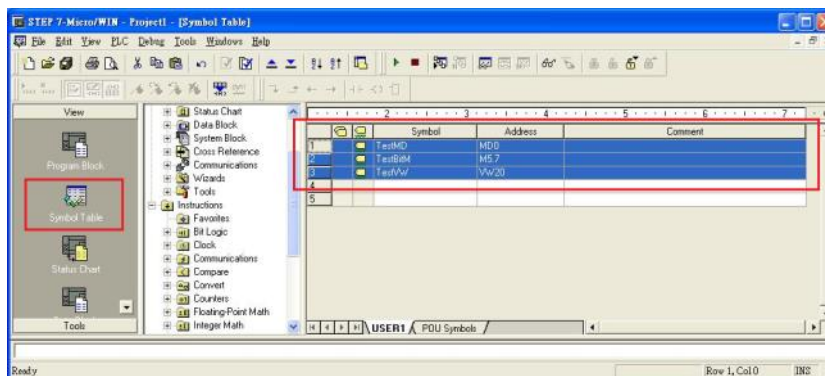
Bit/Word	Device type	Format	Range	Memo
Byte	VB	DDDDDD	0 ~ 10239	V Memory
W	VW	DDDDDD	0 ~ 10239	V Memory
W	VW_Odd	DDDDDD	0 ~ 10239	V Memory
DW	VD	DDDDDD	0 ~ 10239	V Memory Double Word
DW	VD_Odd	DDDDDD	0 ~ 10239	V Memory Double Word
W	VW_String	DDDDDD	0 ~ 10239	String
W	VW_String_Odd	DDDDDD	0 ~ 10239	String
DW	VD_String	DDDDDD	0 ~ 10239	String
DW	VD_String_Odd	DDDDDD	0 ~ 10239	String
Byte	MB	DDDDDD	0 ~ 10239	Byte Memory
W	MW	DDDDDD	0 ~ 10239	Word Memory
W	MW_Odd	DDDDDD	0 ~ 10239	Word Memory
DW	MD	DDDDDD	0 ~ 10239	Word Memory
Byte	SB	DDDDDD	0 ~ 10239	SCR
W	SW	DDDDDD	0 ~ 10239	SCR
DW	SD	DDDDDD	0 ~ 10239	SCR
Byte	SMB	DDDDDD	0 ~ 10239	Special Memory
W	SMW	DDDDDD	0 ~ 10239	Special Memory
DW	SMD	DDDDDD	0 ~ 10239	Special Memory
W	T	DDD	0 ~ 255	Timer
W	C	DDD	0 ~ 255	Counter

- Double word and floating point value must use VD device type.

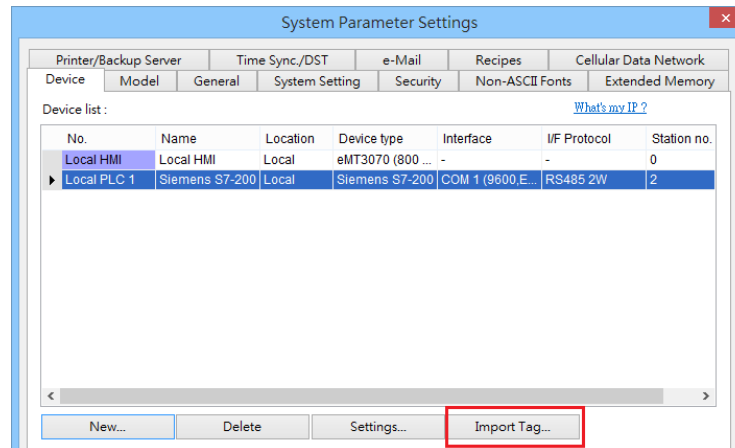
How to Import Tag:

The tags created in the Symbol Table in Step7-MicroWIN software can be imported to EasyBuilder.

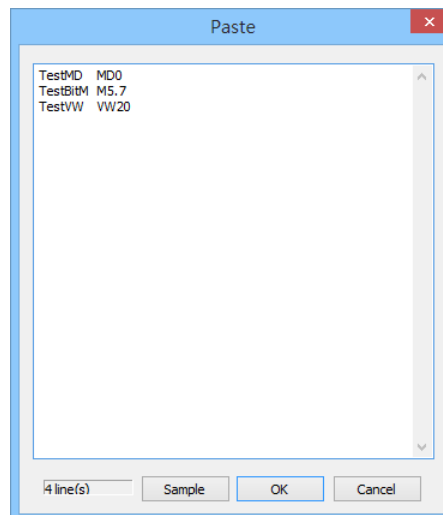
1. In **Symbol Table** create the tags. Select all the tags and click the right mouse button then **copy** the tags.



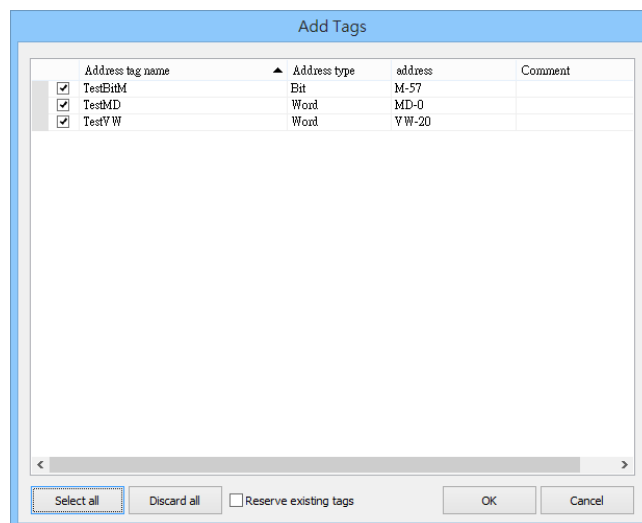
- Launch EasyBuilder, add the driver in the device list in **System Parameter Settings**, and then click **Import Tag** button.



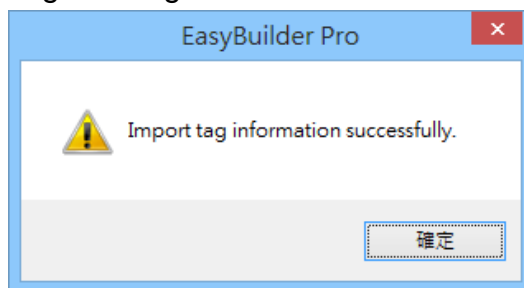
- Paste** the tags copied in step 1 and then click **OK**.



- Select all the tags and then click **OK**.



5. If succeeded, the following message window shows.



Wiring Diagram:

Diagram 1

RS-485 2W

The serial port pin assignments may vary between HMI models, please click the following link for more information.

