

TOSHIBA TOSVERT VF (EtherNet/IP)

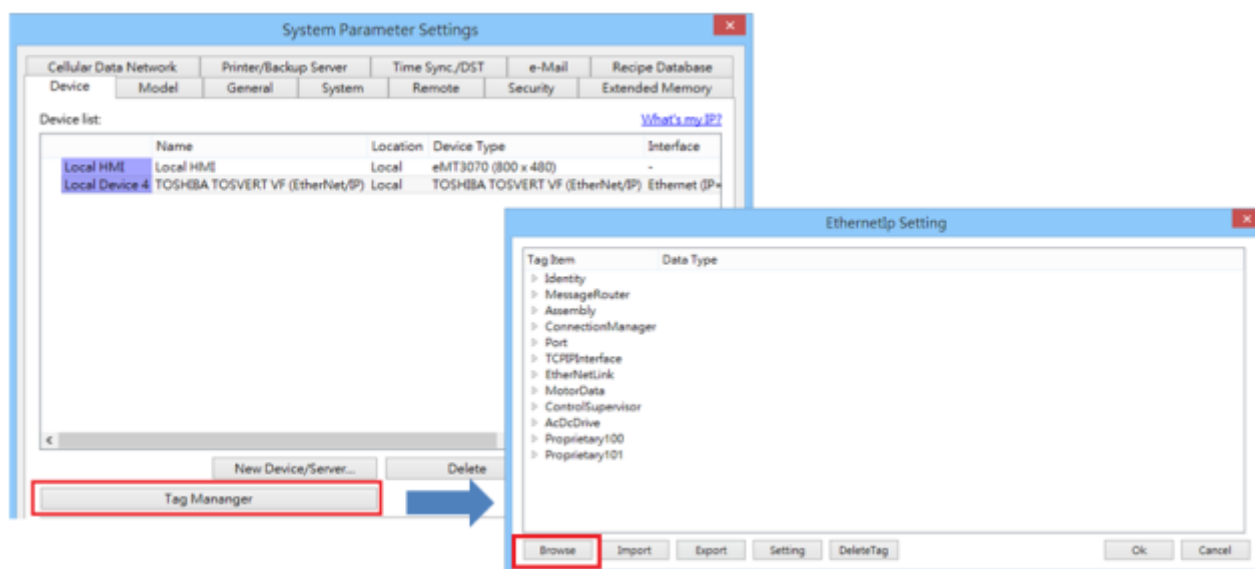
Supported Series: TOSHIBA TOSVERT VF (EtherNet/IP)

Website: <http://www.toshiba-machine.co.jp>

HMI Setting:

| Parameters | Recommended | Options | Notes |
|------------|----------------------------------|---------|-------|
| PLC type | TOSHIBA TOSVERT VF (EtherNet/IP) | | |
| PLC I/F | Ethernet | | |
| Port no. | 44818 | | |

Please click **[Tag Manager]** when adding this driver to initiate tag information. To edit address tag, please see the factory manual.



The following is an example of how to add Vendor ID in Tag Editor. See 3.2.3 *Identity Object* in factory manual for the detail of this ID.

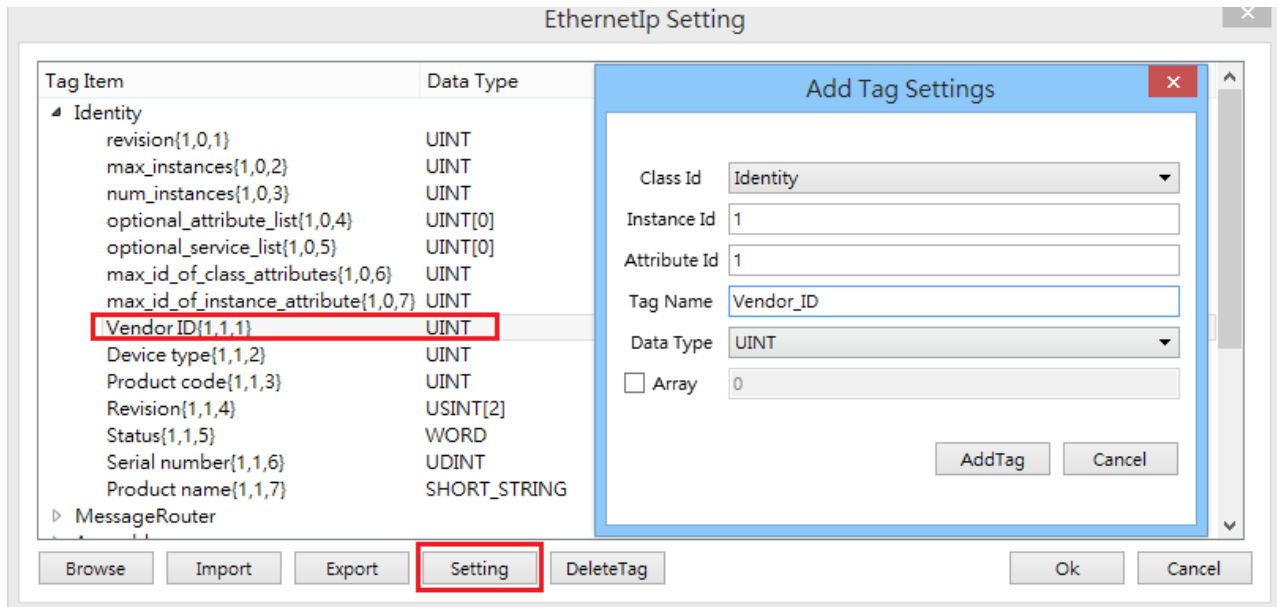
3.2. Identity Object

Class Code: 01_{HEX}

3.2.3. Instance Attributes

| Instance ID | Attribute ID | Access Rule | Name | Data Type | Value |
|-------------|--------------|-------------|--------------|---------------|--|
| 1 | 1 | Get | Vendor ID | UINT | 741 _{DEC} (Crevis Co., Ltd) |
| | 2 | Get | Device Type | UINT | 0C _{HEX} (Communications Adapter) |
| | 3 | Get | Product Code | UINT | 512 _{DEC} (NA-9188) |
| | 4 | Get | Revision | Structure of: | |
| | | | - Major | USINT | 1 ~ 9 |
| | | | - Minor | USINT | 1 ~ 255 |

Under Struct-Defined select Identity to add Vendor_ID. {1,1,1} represents {**Class code** , **Instance ID** , **Attribute ID**}. Enter “UINT” in Data Type field according to the factory manual. When finished, this data member can be found in Identity Object.



Support Device Type:

| Data type | EasyBuilder data format | Memo |
|-----------|--|-------------|
| Bool | bit | |
| Byte | 16-bit BCD, Hex, Binary, Unsigned | 8-bit |
| SInt | 16-bit BCD, Hex, Binary, Signed | 8-bit |
| USInt | 16-bit BCD, Hex, Binary, Unsigned | 8-bit |
| Word | 16-bit BCD, Hex, Binary, Unsigned | 16-bit |
| Int | 16-bit BCD, Hex, Binary, Signed | 16-bit |
| UInt | 16-bit BCD, Hex, Binary, Unsigned | 16-bit |
| DWord | 32-bit BCD, Hex, Binary, Unsigned | 32-bit |
| DInt | 32-bit BCD, Hex, Binary, Signed | 32-bit |
| Real | 32-bit Float | 32-bit |
| UDInt | 32-bit BCD, Hex, Binary, Unsigned | 32-bit |
| Array | Word array for ASCII input and display | Length=word |

Wiring Diagram:

Ethernet cable:

