

## VIPA 300S (Ethernet)

### HMI Setting:

Parameters	Recommended	Options	Notes
PLC type	VIPA 300S (Ethernet)		
PLC I/F	Ethernet		
Port no.	102		
PLC sta. no.	1	0-31	

### Device Address:

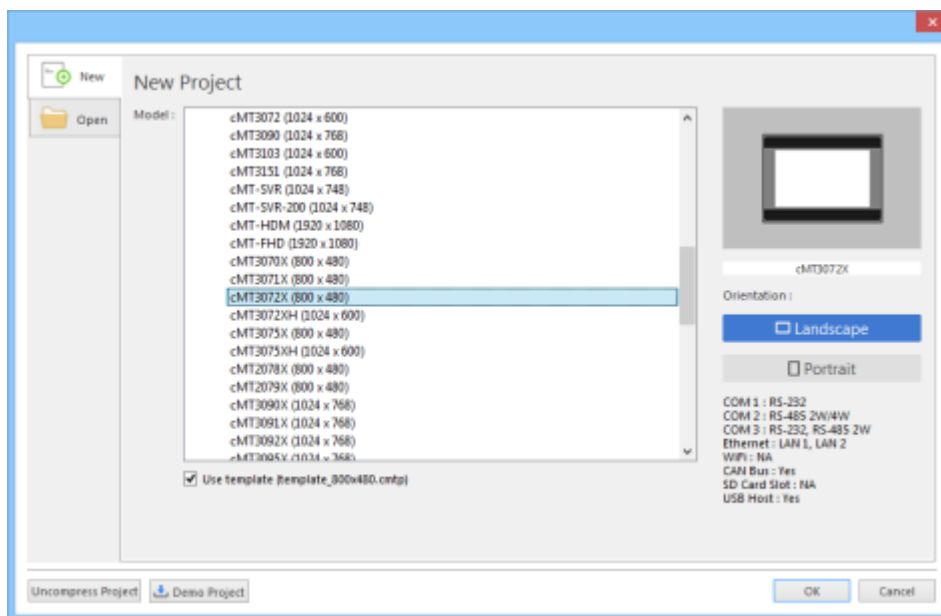
Bit/Word	Device type	Format	Range	Memo
B	I	DDDDo	0 ~ 40957	Input (I)
B	Q	DDDDo	0 ~ 40957	Output (O)
B	M	DDDDo	0 ~ 40957	Bit Memory
B	DBnBit	FFFFFFDDDDo	0 ~ 6553599997	
B	DBxBit	FFFFFFDDDDDo	0 ~ 10700655357	
B	DB0Bit-DB99Bit	DDDDDo	0 ~ 655357	Data Register Bit
W	IW	DDDD	0 ~ 4095	Input (I)
W	QW	DDDD	0 ~ 4095	Output (O)
Byte	MB	DDDD	0 ~ 4095	Bit Memory Byte
W	MW	DDDD	0 ~ 4095	Bit Memory
DW	MD	DDDD	0 ~ 4094	
Byte	DBBn	FFFFFFDDDD	0 ~ 655359999	
Byte	DBBx	FFFFFFDDDD	0 ~ 1070065535	
W	DBn	FFFFFFDDDD	0 ~ 655359999	Data Register (must be even)
W	DBx	FFFFFFDDDD	0 ~ 1070065535	
DW	DBDn	FFFFFFDDDD	0 ~ 655359999	Data Register Double Word (must be multiple of 4)
DW	DBDx	FFFFFFDDDD	0 ~ 1070065535	
W	DBn_String	FFFFFFDDDD	0 ~ 655359999	
W	DBx_String	FFFFFFDDDD	0 ~ 1070065535	
W	DBn_String1	FFFFDDDD	0 ~ 40969999	
W	DBx_String1	FFFFFFDDDD	0 ~ 1070065535	
DW	DBDn_String	FFFFFFDDDD	0 ~ 655359999	

Bit/Word	Device type	Format	Range	Memo
DW	DBDx_String	FFFFFFDDDD	0 ~ 1070065535	
W	DB0 ~ DB99	DDDD	0 ~ 65535	Data Register

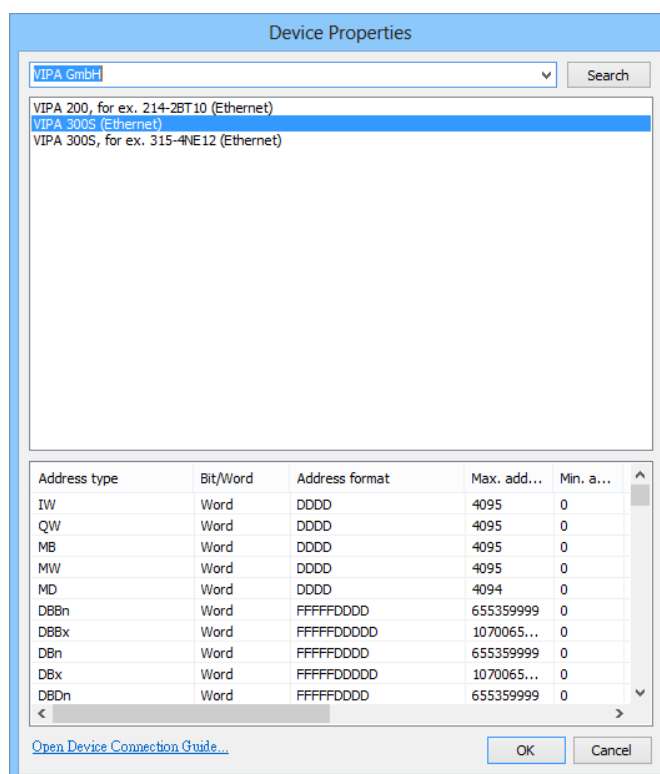
\* Double word and floating point value must use DBDn device type.

## EasyBuilder Device Setting Steps

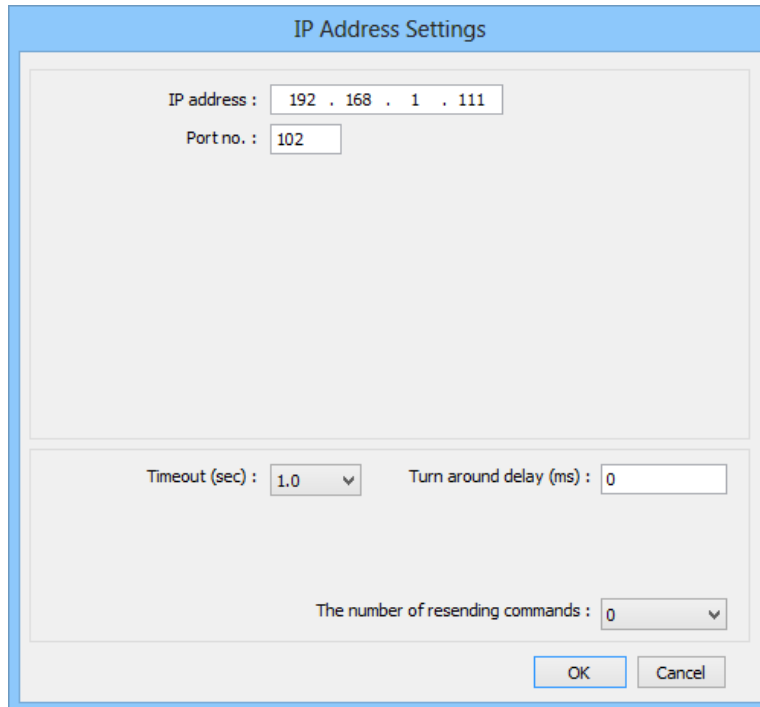
1. Open EasyBuilder, File/NEW, select HMI model and press **[OK]**.



2. "System Parameter Settings" window is shown, click **[New Device/Server]**.
3. Select **"VIPA 300S (Ethernet)"**.

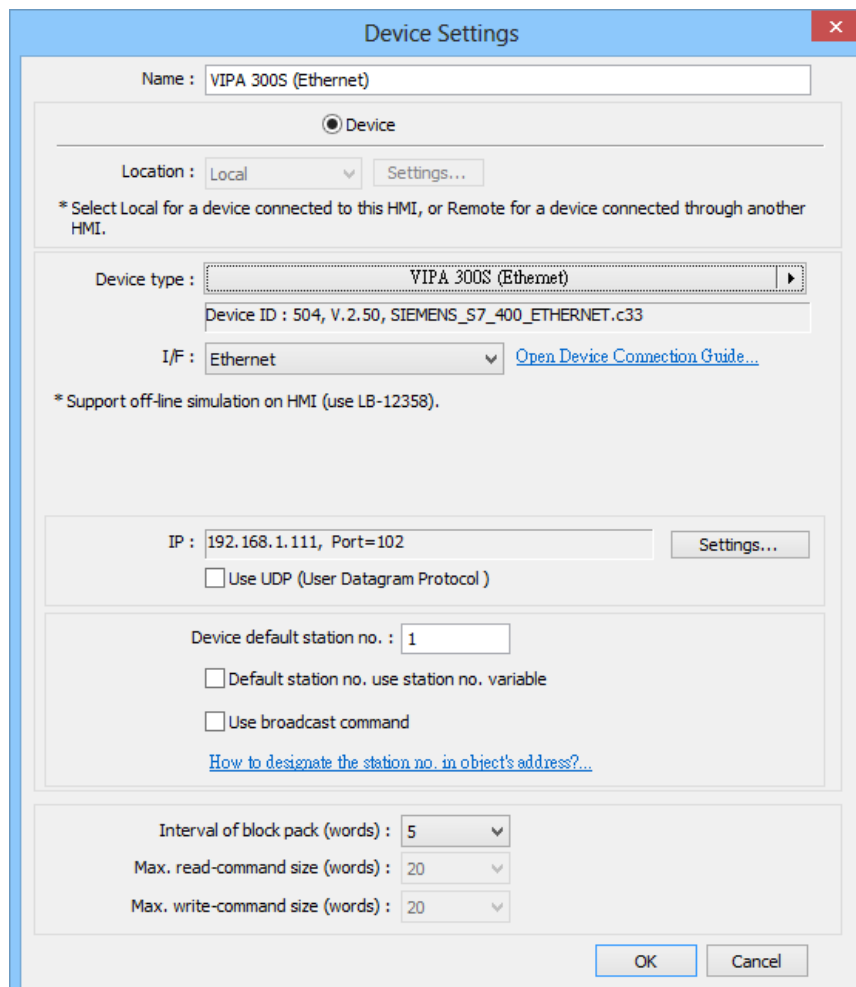


4. Press **[Settings]**.
5. Set IP address, Port no



The IP Address Settings dialog box is shown. It has a title bar 'IP Address Settings'. Inside, there are two input fields: 'IP address : 192 . 168 . 1 . 111' and 'Port no. : 102'. Below these, there are two more input fields: 'Timeout (sec) : 1.0' (with a dropdown arrow) and 'Turn around delay (ms) : 0'. At the bottom, there is a field 'The number of resending commands : 0' (with a dropdown arrow). At the very bottom right, there are 'OK' and 'Cancel' buttons.

6. The setting will be finished as below.



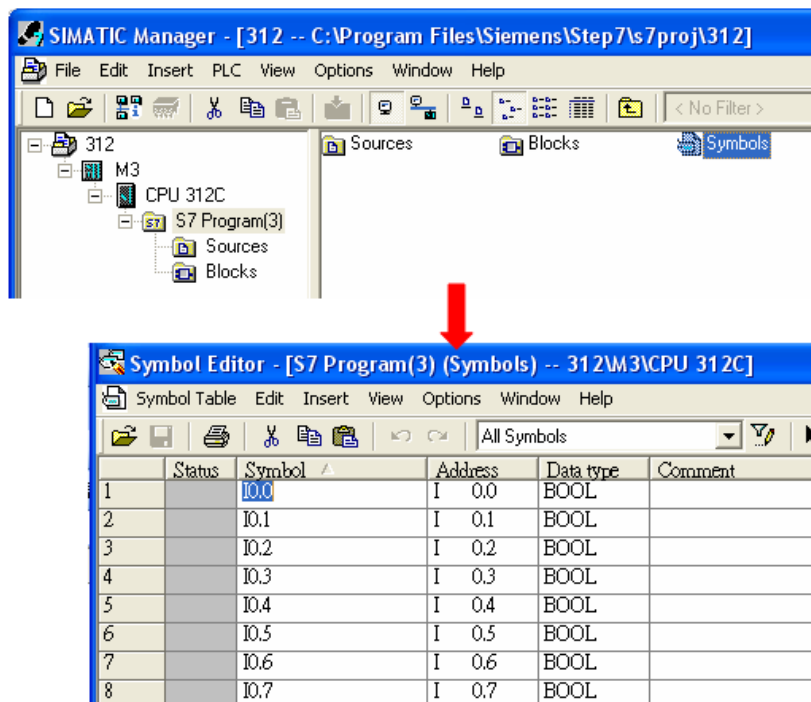
The Device Settings dialog box is shown. It has a title bar 'Device Settings' with a close button. Inside, there is a 'Name : VIPA 300S (Ethernet)' field. Below it, there is a 'Device' section with a 'Location : Local' dropdown and a 'Settings...' button. A note says: '\* Select Local for a device connected to this HMI, or Remote for a device connected through another HMI.' Below that, there is a 'Device type : VIPA 300S (Ethernet)' dropdown with a right arrow. Below it, there is a 'Device ID : 504, V.2.50, SIEMENS\_S7\_400\_ETHERNET.c33' field. Below that, there is an 'I/F : Ethernet' dropdown and a link 'Open Device Connection Guide...'. A note says: '\* Support off-line simulation on HMI (use LB-12358).' Below that, there is an 'IP : 192.168.1.111, Port=102' field and a 'Settings...' button. Below that, there is a checkbox 'Use UDP (User Datagram Protocol)'. Below that, there is a 'Device default station no. : 1' field. Below it, there are two checkboxes: 'Default station no. use station no. variable' and 'Use broadcast command'. Below that, there is a link 'How to designate the station no. in object's address?...'. Below that, there are three dropdowns: 'Interval of block pack (words) : 5', 'Max. read-command size (words) : 20', and 'Max. write-command size (words) : 20'. At the bottom right, there are 'OK' and 'Cancel' buttons.

## How to Import Tag:

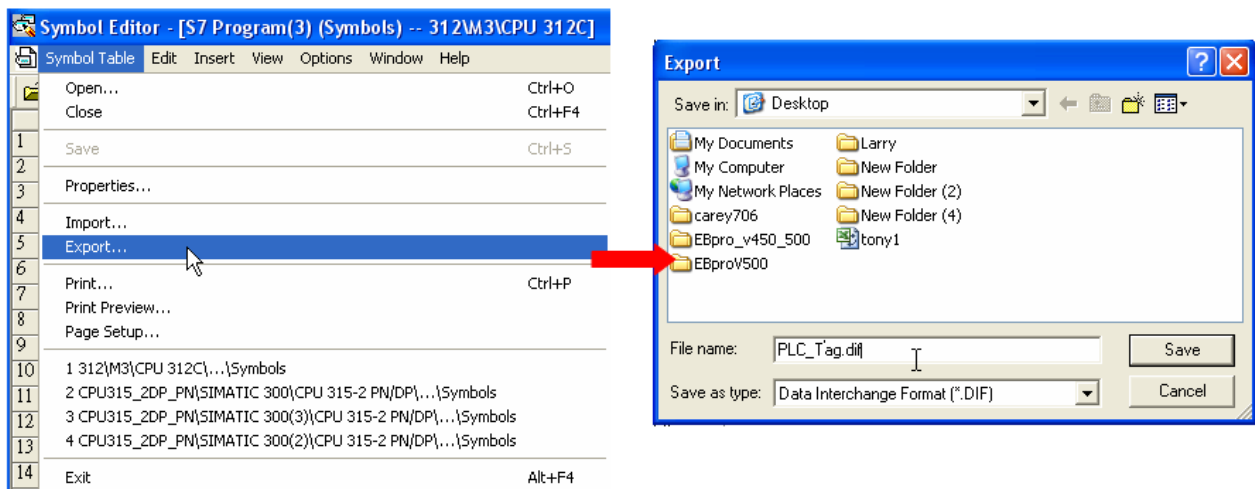
SIEMENS STEP 7 program allows building files of user-defined tag (\*.dif file and \*.AWL file), and import these files in EasyBuilderPro -> System Parameter Settings. The following describes how to build and import these two types of files.

### 1. Building \*.dif File

- a、In “Symbols” create user-defined tag.

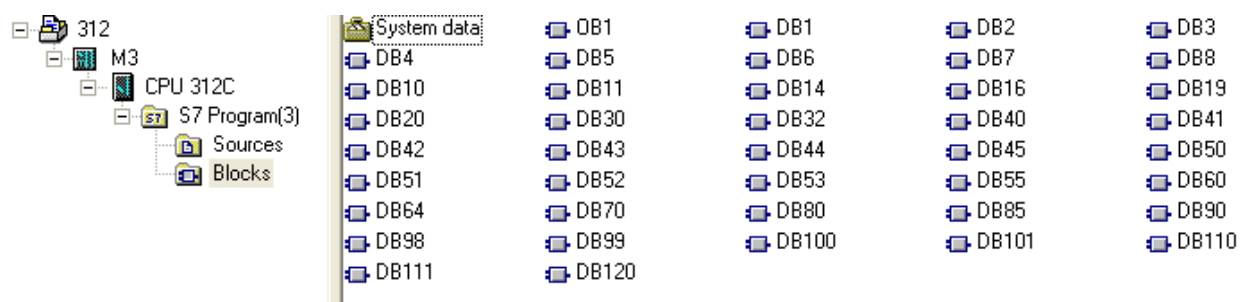


b、Click **Export** to export the edited file and click **Save**.

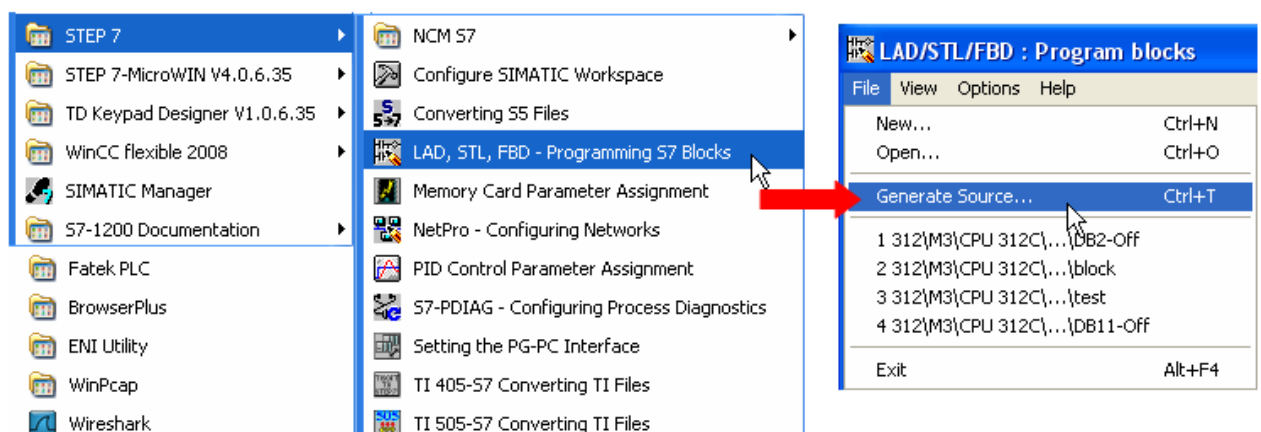


## 2. Building \*.AWF File

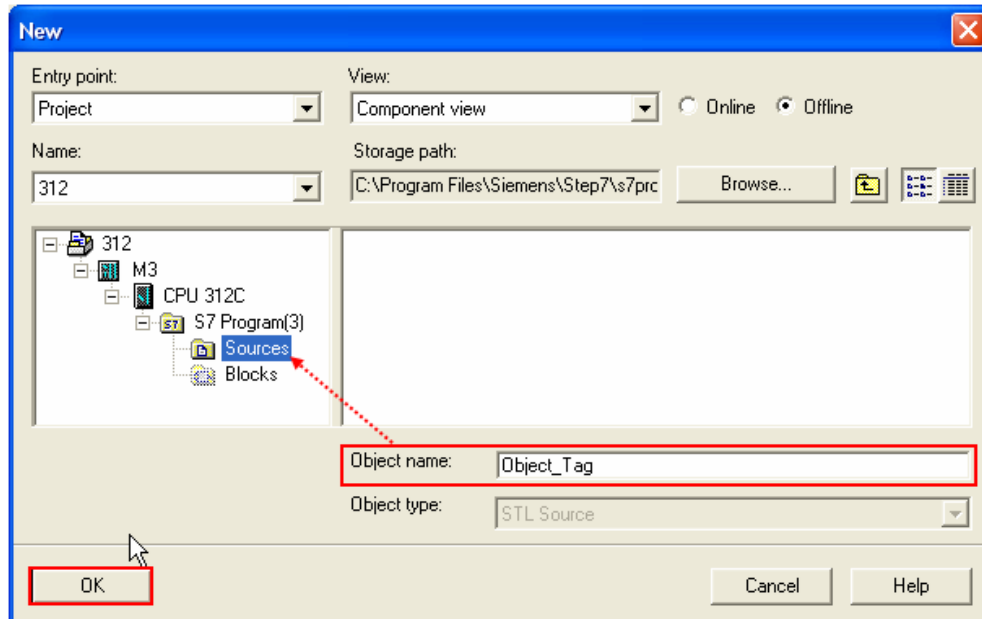
a、In **Blocks** create items as shown below:



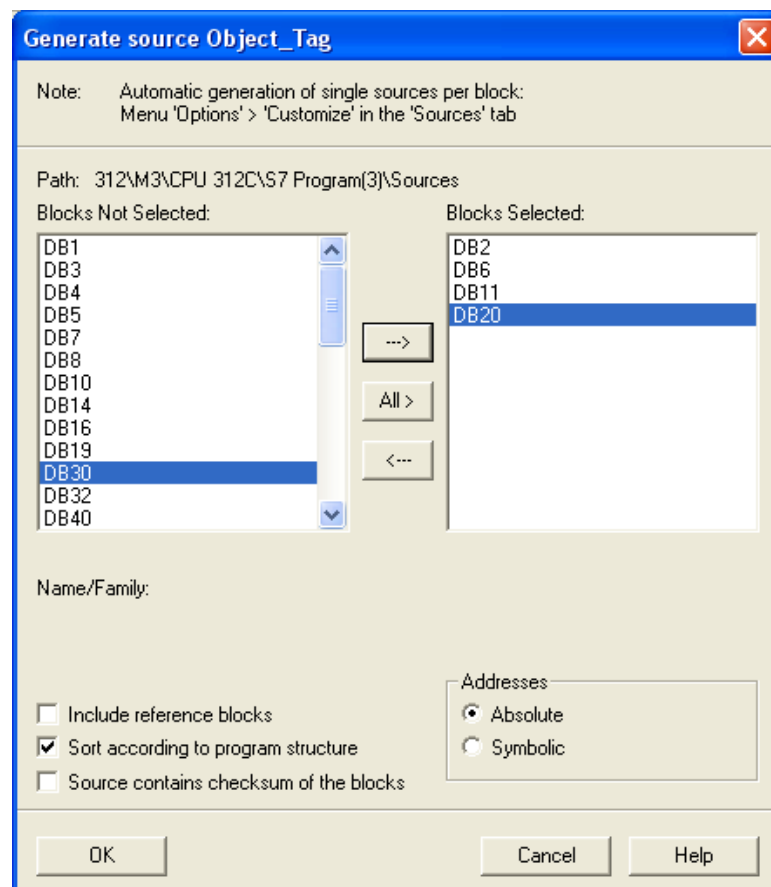
b、Open **LAD/STL, FBD – Programming S7 Blocks**, click **File -> Generate Source**.



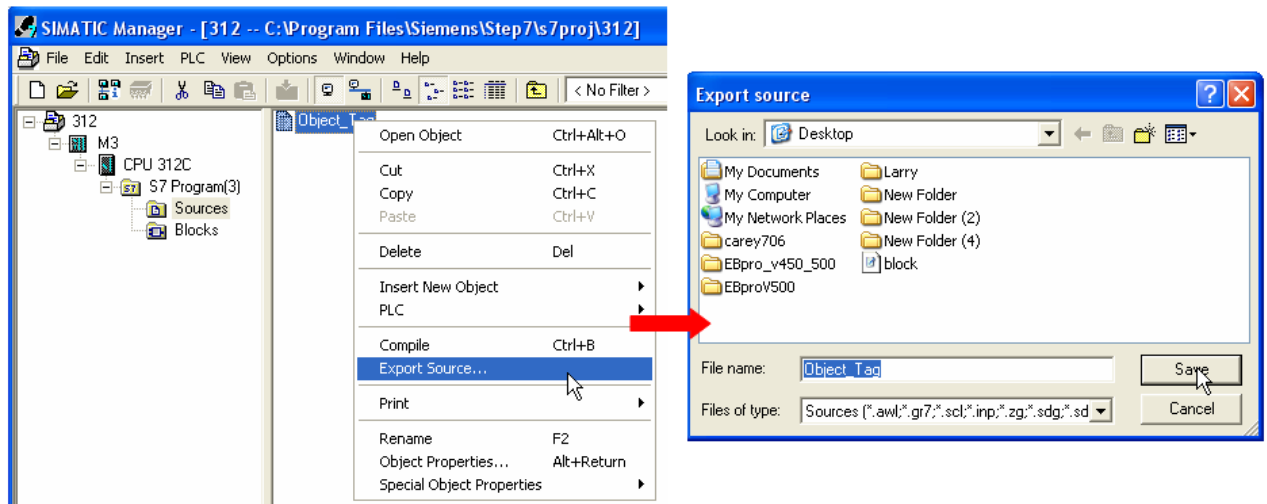
- c、 Select **Sources** as storage path, specify the file name then click **OK**.



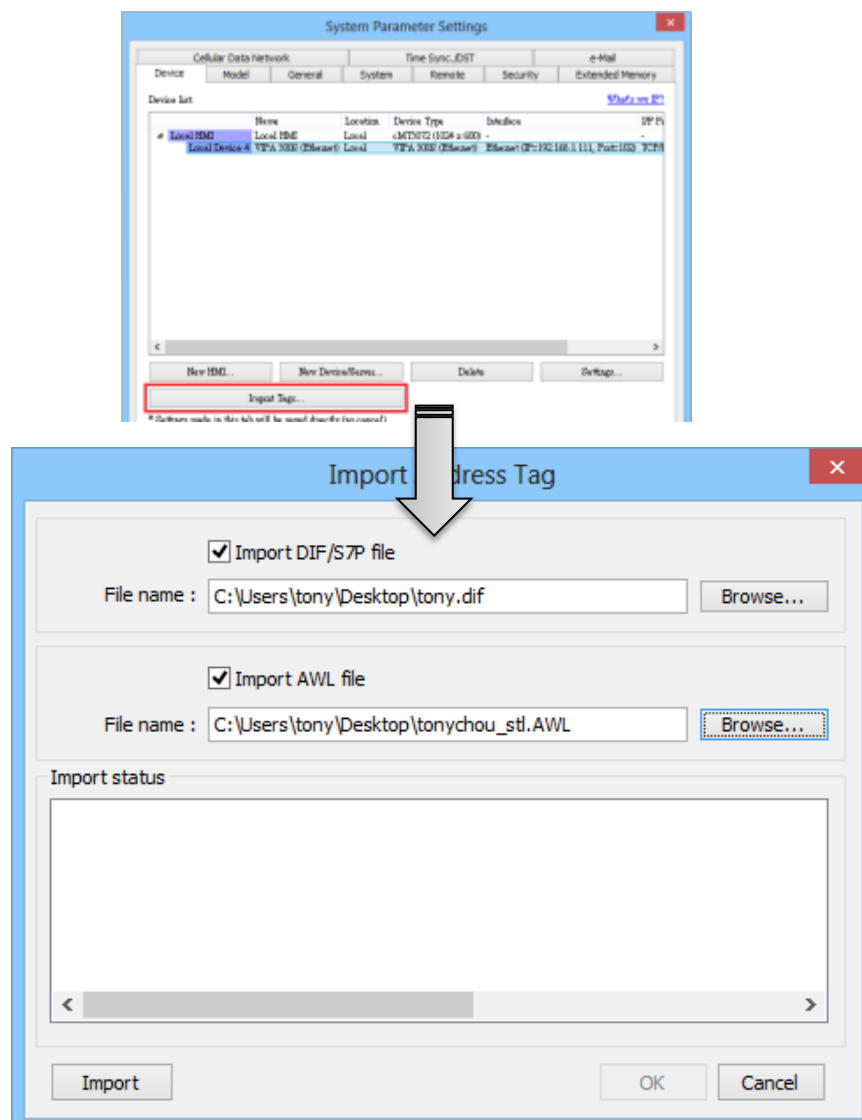
- d、 Select the objects to be exported then click **OK**.



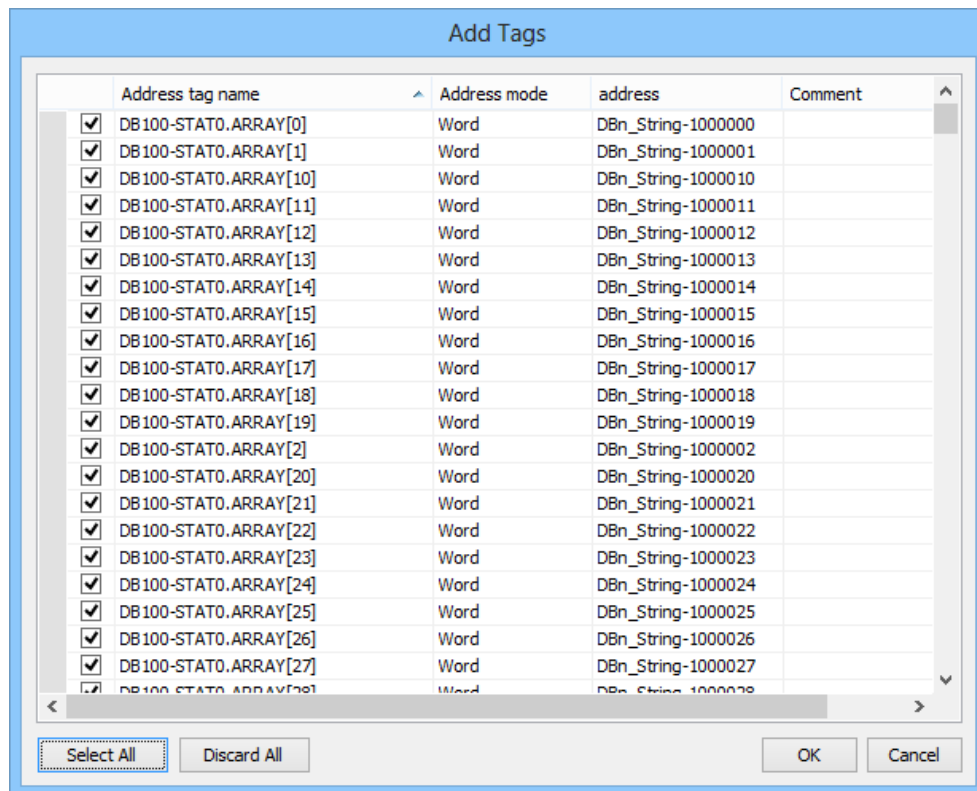
- e、 Under **Sources** there will be names of the saved files, select **Export Source** to build \*.AWL file.



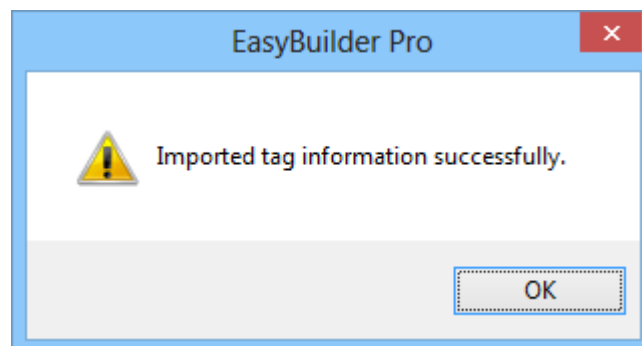
The generated \*.DIF/S7P and \*.AWL files can be imported in EasyBuilderPro **System Parameter Settings**, by clicking **Import Tag**.



Select the tag to import



Tag information successfully imported.



## Wiring Diagram:

Ethernet cable:

