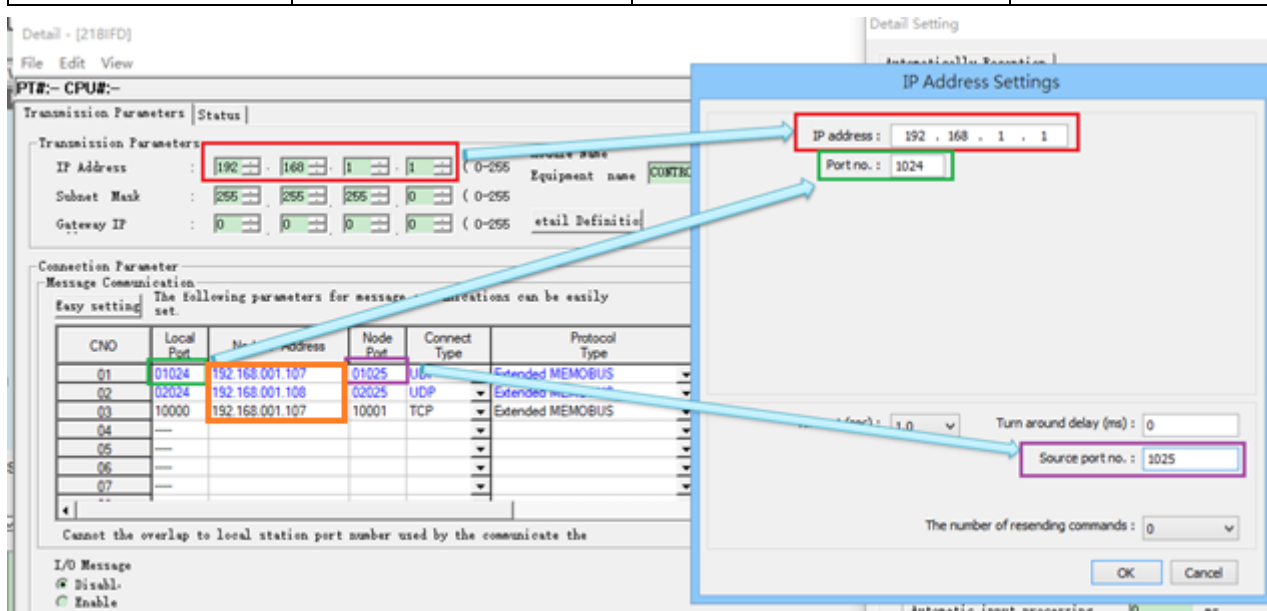


YASKAWA MP3000 Series – Extension (Ethernet)

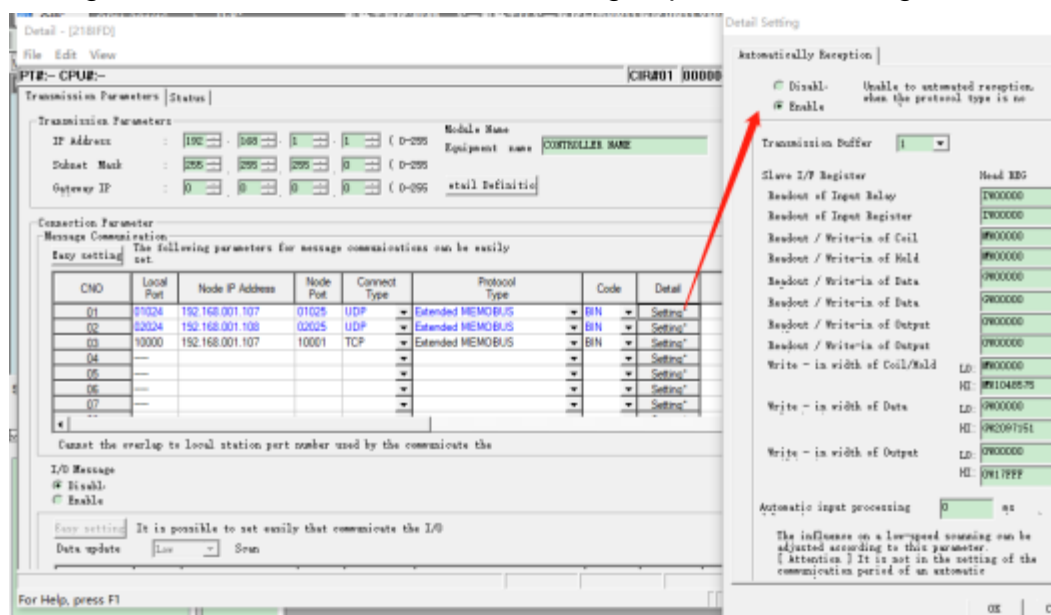
Website: <http://www.yaskawa.com/site/home.nsf/home/home.html>

HMI Setting:

Parameters	Recommended	Options	Notes
PLC type	YASKAWA MP3000 Series – Extension		
PLC I/F	Ethernet		
Port no.	1024	256 ~ 65535	Local Port
Source Port no.	1024	256 ~ 65535	



After checking enable, it will take effect after writing to plc and restarting.



Device Address:

Bit/Word	Device type	Format	Range	Memo
B	SB	DDDDh	0 ~ 65534f	
B	IB	HHHHHh	0 ~ 27fff	
B	OB	HHHHHh	0 ~ 27fff	
B	MB	DDDDDDh	0 ~ 1048575f	
B	GB	DDDDDDh	0 ~ 2097151f	
W	SW	DDDDD	0 ~ 65534	
W	IW	HHHHH	0 ~ 27fff	
W	OW	HHHHH	0 ~ 27fff	
W	MW	DDDDDD	0 ~ 1048575	
W	GW	DDDDDD	0 ~ 2097151	

Wiring Diagram:

Ethernet cable

