

# YASKAWA MP Series - Extension (Ethernet)

## HMI Setting:

Parameters	Recommended	Options	Notes
PLC type	YASKAWA MP Series - Extension (Ethernet)		
PLC I/F	Ethernet (UDP)		
Port no.	10000		
PLC sta. no.	1		

## PLC Setting:

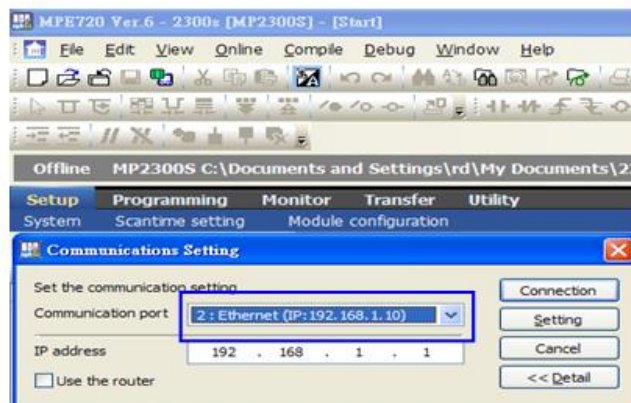
Yaskawa PLC Communication Parameter Settings

(1) PLC Factory Communication Parameter Settings:

Item	Set
IP Address	192.168.1.1
Subnet Mask	255.255.255.0
Gateway IP Address	0.0.0.0
System Port No.	10000 (UDP)
TCP Zero Window Timer Value	3 (s)
TCP Retry Time	500 (ms)
TCP Close Time	60 (s)
IP Assemble Time	30 (s)
Max. Packet Length	1500 (bytes)

(2) Setting Steps:

1. Set IP for PLC.



Setup	Programming	Monitor	Transfer	Utility
System	Scantime setting	Module configuration		
Ladder			Start	

Module Details MP2300S SLOT#00			
Slot Number	1	2	3
Module Type	CPU	218IFA	
Controller Number	-	01	
Circuit Number	-	01	
I/O Start Register	----	0000	
I/O End Register	----	07FF	
Disable Input		Enable	
Disable Output		Enable	
Motion Start Register	----	----	
Motion End Register	----	----	
Details			

218IFA : 100M Ethernet in functions.

■ 2108FA 12 MP2300S Offline Local

PT#:- CPU#:- RACK#01 Slot #00 CH#01 0000-07FF

Transmission Parameters Status

Transmission Parameters

IP Address: 192.168.1.1 (0-255) Module Name Definition: CONTROLLER NAME

Subnet Mask: 255.255.255.0 (0-255)

Gateway IP Address: 0.0.0.0 (0-255) Detail Definition

Connection Parameter

Message Communication

Enter setting It is possible to follow parameters setting easily that communicate the message.

CNO	Local Port	Node IP Address	Node Port	Connect Type	Protocol Type	Code	Detail
01	10000	000.000.000.000	00000	UDP	Extended MEMOBUS	BIN	Setting
02	-----						Setting
03	-----						Setting
04	-----						Custom

Cannot the overlap to local station port number used by the communicate the IO message.

IO Message Communication

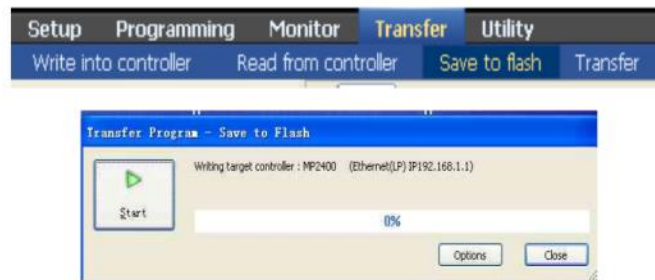
☒ Enable ☐ Disable

Enter setting It is possible to set easily that communicate the IO message.

Data update timing: Low -> Stop

Read/Write/Read	Local Port	Node IP Address	Node Port	Connect Type	Protocol Type	Code	Detail
Read	-----						Setting

5. Download PLC communication parameters to PLC, and restart the controller.



(3) HMI Settings:

1. Select Ethernet for PLC I/F.
2. Tick [UDP].
3. Set PLC IP and Port, the default Port is 10000.



## Device Address:

Bit/Word	Device type	Format	Range	Memo
B	SB	DDDDh	0 ~ 8191f	
B	IB	HHHHh	0 ~ ffff	
B	OB	HHHHh	0 ~ ffff	
B	MB	DDDDDh	0 ~ 65534f	
W	SW	DDDD	0 ~ 8191	
W	IW	HHHH	0 ~ ffff	
W	OW	HHHH	0 ~ ffff	
W	MW	DDDDD	0 ~ 65534	
DW	ML	DDDDD	0 ~ 65534	

## Wiring Diagram:

### Ethernet cable

