

## Schneider UniTelway

Supported Series: Modicon TSX Micro&Nano&Neza series PLC.

Website: <http://www.modicon.com>

### HMI Setting:

Parameters	Recommended	Options	Notes
PLC type	Schneider UniTelway		
PLC I/F	RS485 2W	RS232/RS485	
Baud rate	19200	9600~115200	
Data bits	8	7,8	Must set to 8 for this protocol
Parity	Odd	Even, Odd, None	
Stop bits	1	1, 2	
HMI sta. no.	5	1-8	
PLC sta. no.	0	0-3	

Online simulator	YES	Extend address mode	YES
Broadcast command	NO		

### PLC Setting:

Communication mode	UniTelWay protocol, set PLC as master
--------------------	---------------------------------------

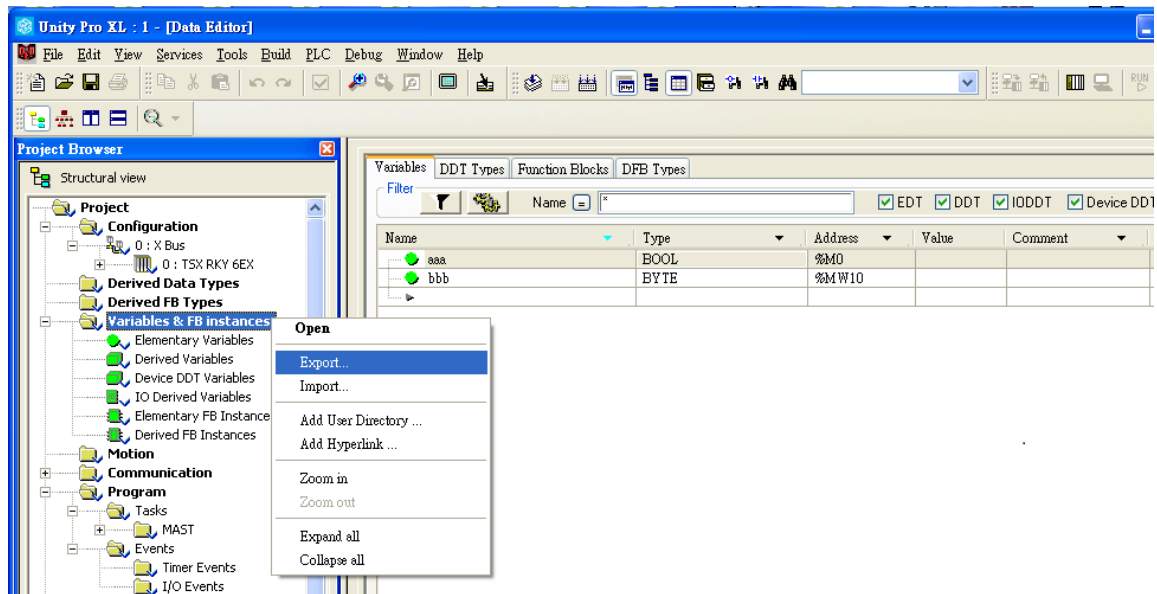
### Device Address:

Bit/Word	Device type	Format	Range	Memo
B	S	DDDDD	0 ~ 32767	Internal relay
B	M	DDDDD	0 ~ 32767	Auxiliary relay
B	MW.B	DDDDDdd	0 ~ 3276715	Data register bit
W	MW	DDDDD	0 ~ 32767	Data register

## How to Import Tags:

### Export tag(\*.XSY):

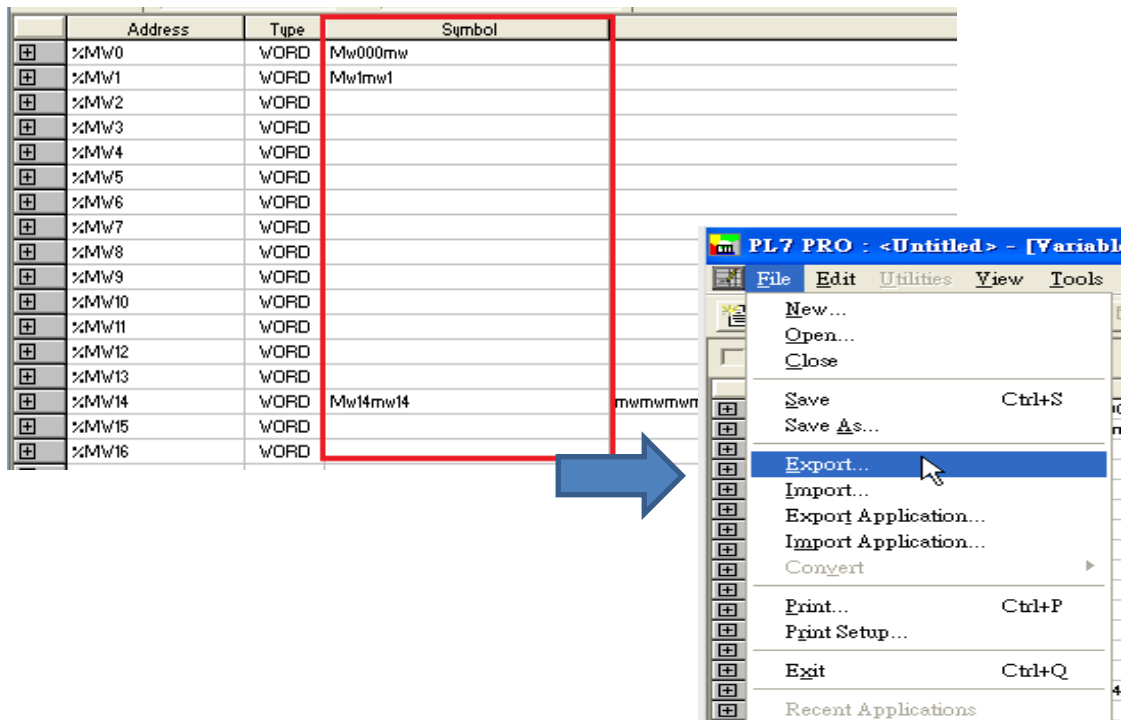
Unity Pro XL -> Variables & FB instances -> Export (\*.XSY)



### Export tag(\*.SCY):

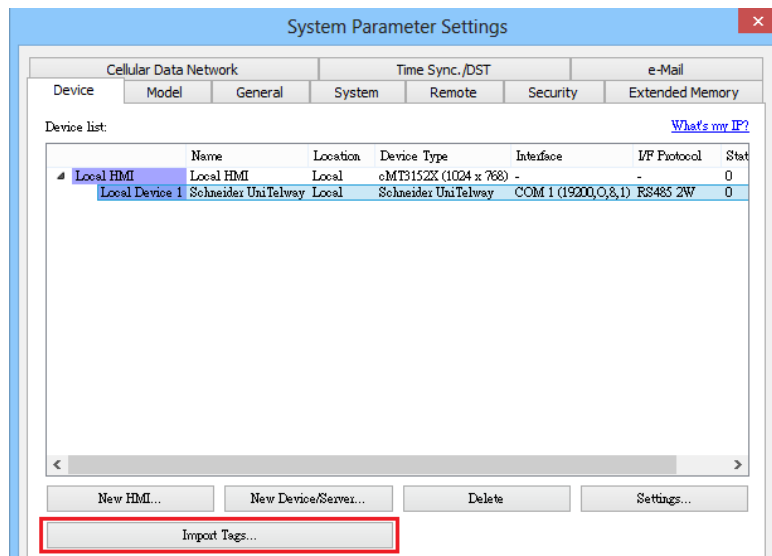
PL7 PRO -> Variables, create data, File -> Export SCY file.

Note: Symbol must have data to be exported.

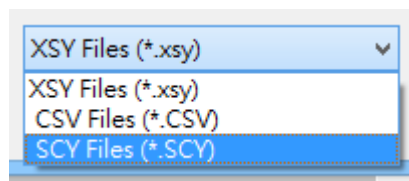


## Import tag:

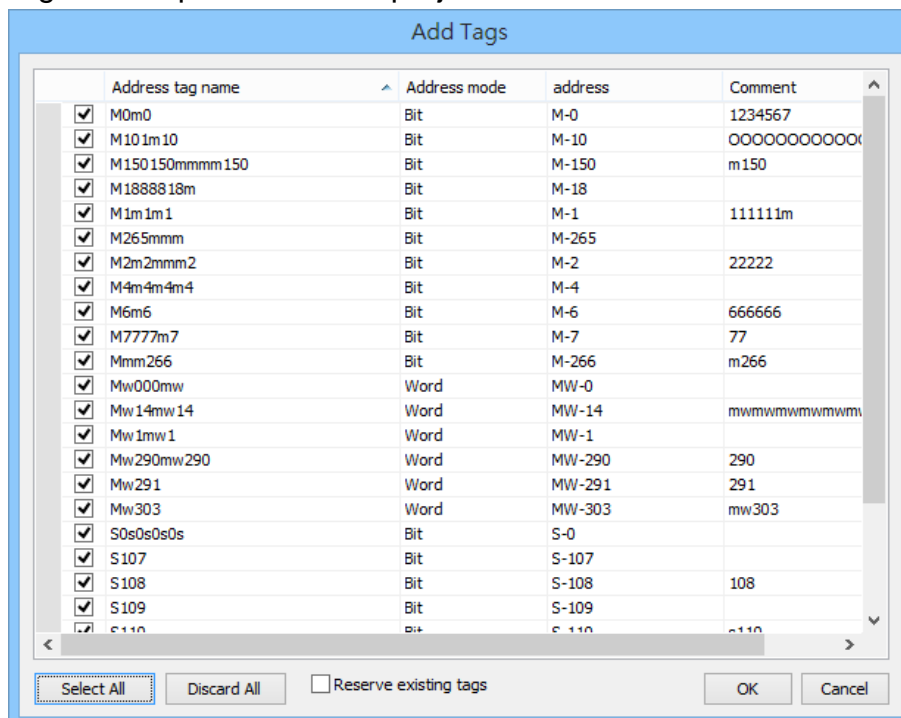
### 1. EasyBuilder Pro -> System Parameter Settings -> Import Tags



### 2. Select the file type to import.



### 3. Select the tag to be imported into the project.



## Wiring Diagram:

**RS-485 2W** (TSX37-XX/TSX07-XX CPU : 9P D-Sub to 9P D-Sub)

The serial port pin assignments may vary between HMI models, please click the following link for more information.

**The following is the view from the soldering point of a connector.**

