

CODESYS V3 (Ethernet)

Supported series: LTI MOTION MO CM-3, MO CM-6, CODESYS V3, Hitachi-EH150

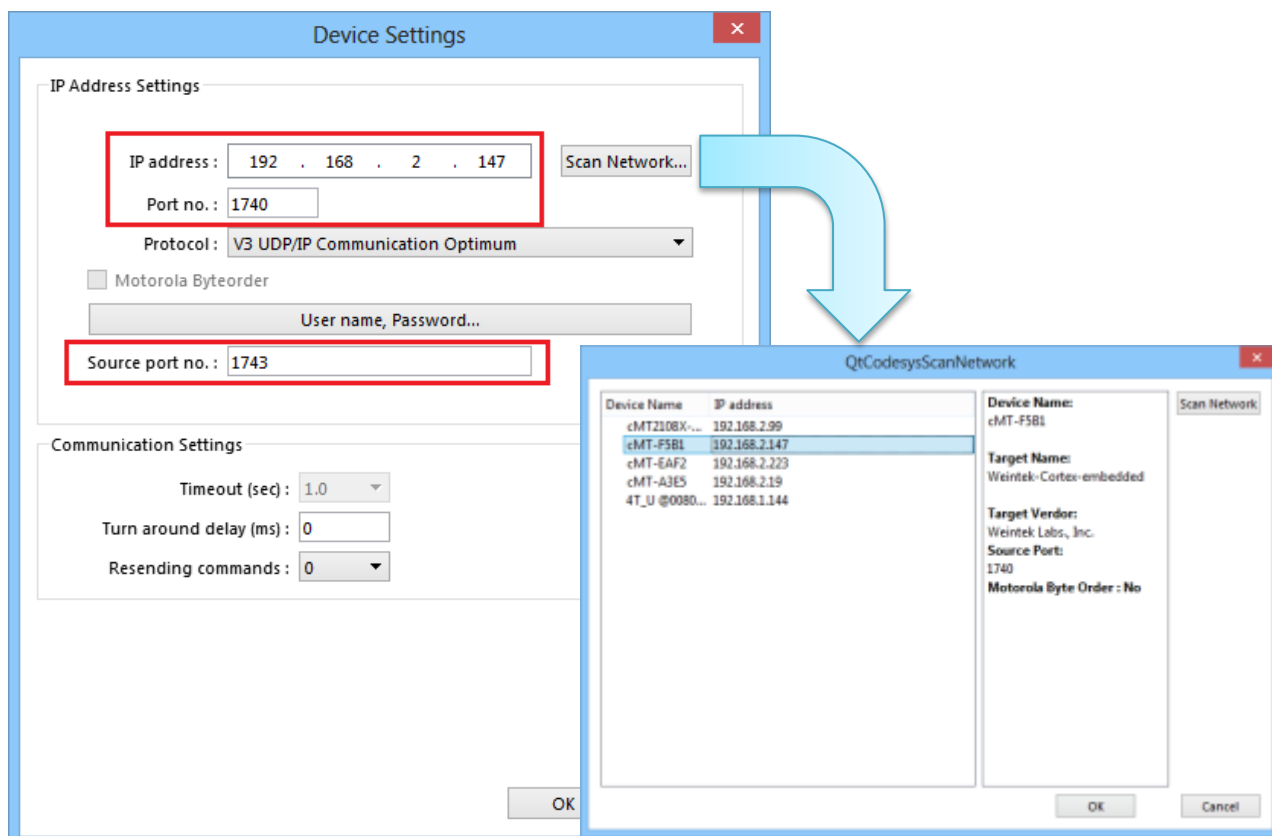
Website: <https://www.codesys.com/>

HMI Setting:

Parameters	Recommended	Options	Notes
PLC type	CODESYS V3 (Ethernet)		
PLC I/F	Ethernet		
Port no.	1740		*Note
Source port	1742		*Note
Protocol	V3 UDP/IP	V3 UDP/IP V3 TCP/IP V3 TCP/IP Communication Optimum V3 UDP/IP Communication Optimum	
Motorola Byteorder			
User name, Password			

*Note:

Codesys V3 UDP, UDP Communication Optimum, through **[Scan Network]** function, you can get IP address and related Port no. information..

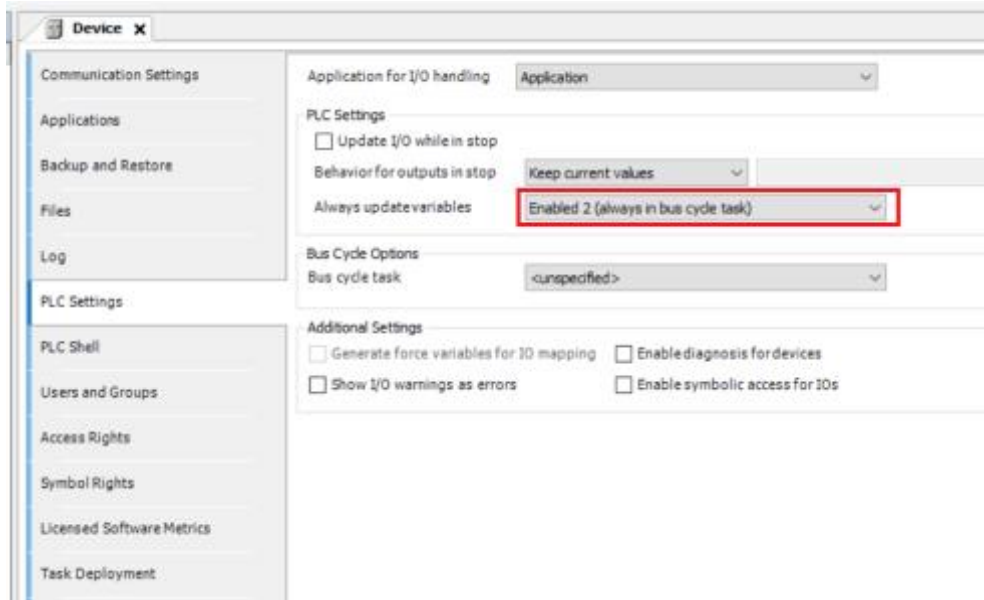


PLC Setting:

Device user management

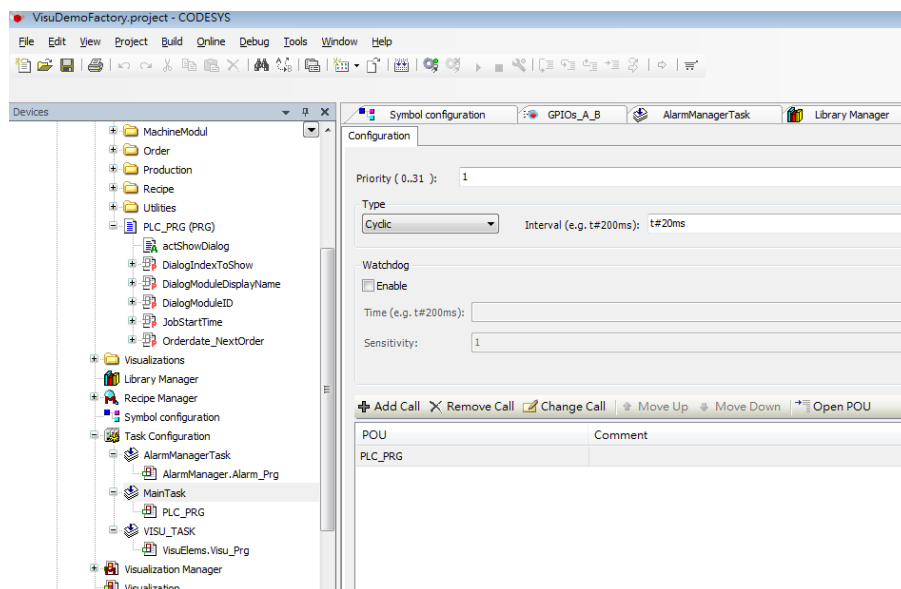
Enable or disable according to the settings.

If the response of the communication value is delayed, you can try to adjust the **"Always update variables"** setting parameter to **"Enabled 2 (always in bus cycle task)"**.

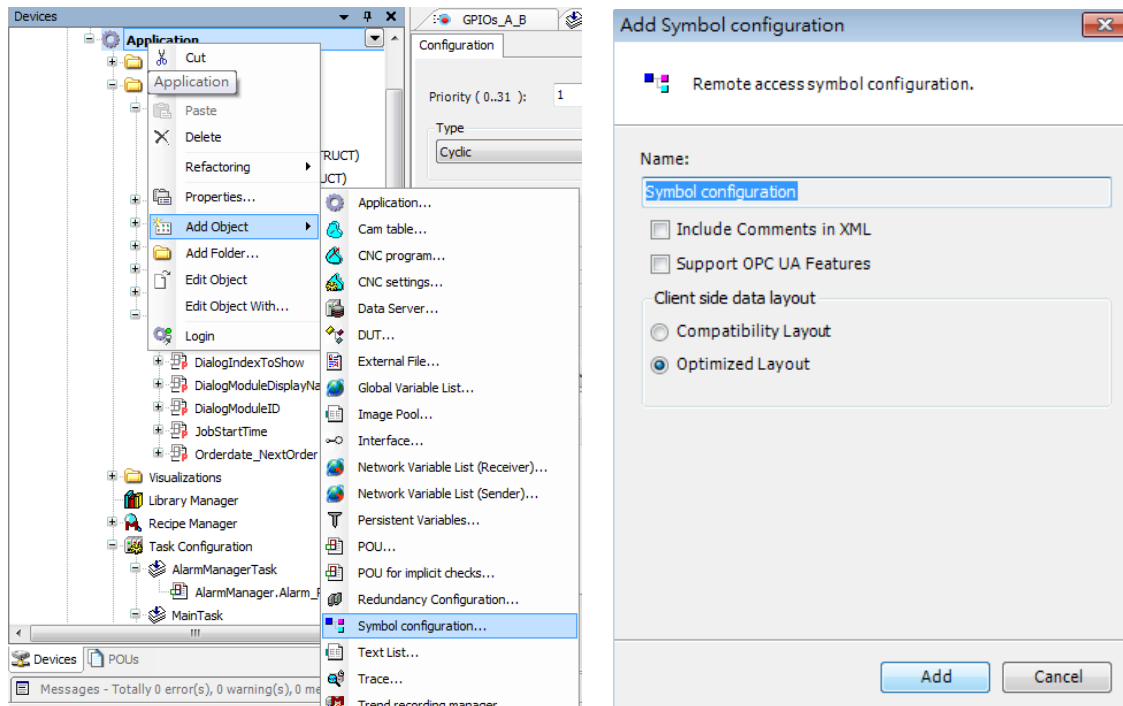


How to Import Tags:

1. Under "MainTask" set POU PLC_PRG.

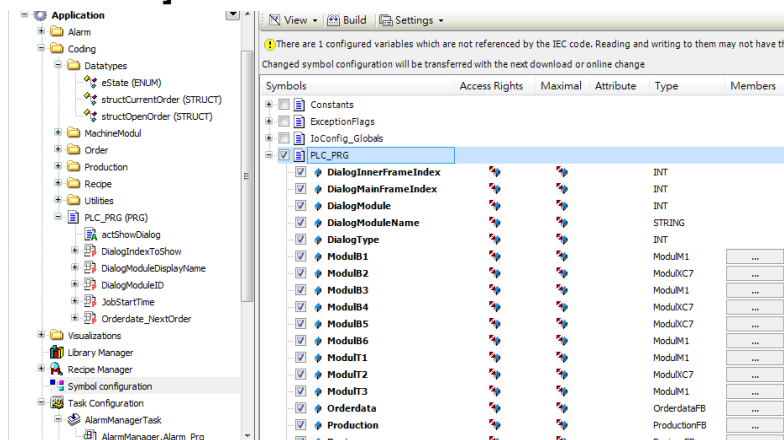


2. Add "Symbol configuration" into Devices list.



3. Select PLC_PRG and its tag information is shown, build the project.

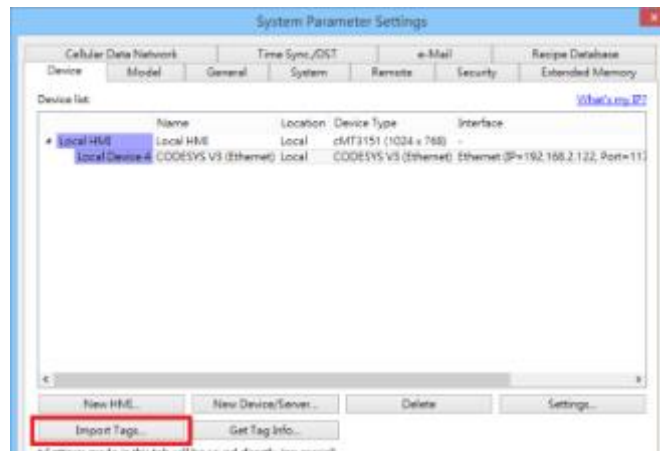
[build] -> [Generate Code]



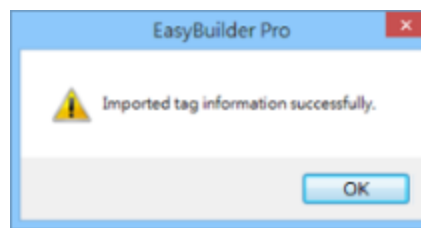
4. A *.xml file is generated in the directory of the project.

VisuDemoFactory.Device.Application.77b33013-b5cd-4...	2016/4/29 11:36	BOOTINFO 檔案	43,347 KB
VisuDemoFactory.Device.Application.77b33013-b5cd-4...	2016/4/29 11:36	BOOTINFO_GUL...	1 KB
VisuDemoFactory.Device.Application.77b33013-b5cd-4...	2016/4/29 11:36	COMPILEINFO 檔...	43,347 KB
VisuDemoFactory.Device.Application.xml	2016/4/29 11:36	XML Document	29 KB
VisuDemoFactory.project	2016/4/29 19:26	CODESYS project	1,362 KB
VisuDemoFactory.project.~u	2016/5/4 11:17	~U 檔案	1 KB
VisuDemoFactory-admin-Weintek-RD-APP1.opt	2016/4/29 19:26	OPT 檔案	81 KB
VisuDemoFactory-AllUsers.opt	2016/4/29 19:26	OPT 檔案	1 KB

5. In System Parameter Settings click **[New]** to add CoDeSys V3 (Ethernet) driver into the device list and then click **[Import Tags]**, and then select the tag file (.xml) generated by the PLC software.



6. When the tags are imported successfully, click **[OK]** to leave.



Note: **[Get Tag Info]** The obtained address may be incomplete, it is recommended to use the **[Import Tags]** function.

Support Device Type:

Data type	EasyBuilder data format	Memo
Bool	bit	
Byte	16-bit BCD, Hex, Binary, Unsigned	8-bit
SInt	16-bit BCD, Hex, Binary, Signed	8-bit
USInt	16-bit BCD, Hex, Binary, Unsigned	8-bit
Word	16-bit BCD, Hex, Binary, Unsigned	16-bit
Int	16-bit BCD, Hex, Binary, Signed	16-bit
UInt	16-bit BCD, Hex, Binary, Unsigned	16-bit
DWord	32-bit BCD, Hex, Binary, Unsigned	32-bit
DInt	32-bit BCD, Hex, Binary, Signed	32-bit
Real	32-bit Float	32-bit
UDInt	32-bit BCD, Hex, Binary, Unsigned	32-bit

Data type	EasyBuilder data format	Memo
TIME	32-bit BCD, Hex, Binary, Unsigned	32-bit
TIME_OF_DAY	32-bit BCD, Hex, Binary, Unsigned	32-bit
DATE	32-bit BCD, Hex, Binary, Unsigned	32-bit
DATE_AND_TIME	32-bit BCD, Hex, Binary, Unsigned	32-bit
LInt	64-bit Signed	64-bit
ULInt	64-bit Unsigned	64-bit
LWord	64-bit Unsigned	64-bit
LReal	64-bit Float	64-bit
String	Word array for ASCII input and display	Length=word
WString	Word array for ASCII input and display	Length=word

Note1: String length must be set identical to the length in Codesys software.

Note2: EBPro V6.03.02 or later supports 64 bits data type (**cMT Series only**), but please note that the address limit range is 48 bits in maximum.

Note3: The array type of DUT is not supported, as shown in the following example:

```
VAR
    arStationStockData : ARRAY[0..26] OF structStockData;
END_VAR
```

Note4: Arrays starting with values other than 0 are not supported, for example, tag[1..7] type.

Wiring Diagram:

Ethernet cable:

