

# Mitsubishi FX5U

Supported Series: Mitsubishi FX5U/FX5UC

Website: <http://www.mitsubishi-automation.com>

## HMI Setting:

Parameters	Recommended	Options	Notes
PLC type	Mitsubishi FX5U		
PLC I/F	RS485 4w		
Baud rate	19200	9600 ~ 115200	
Data bits	8	7 , 8	
Parity	None	None/Odd/Even	
Stop bits	1	1 , 2	
PLC sta. no.	0	0 ~ 15	
Message pattern	1	1,4,5	Message Pattern *Note1
Network number	0	0 ~ 999	

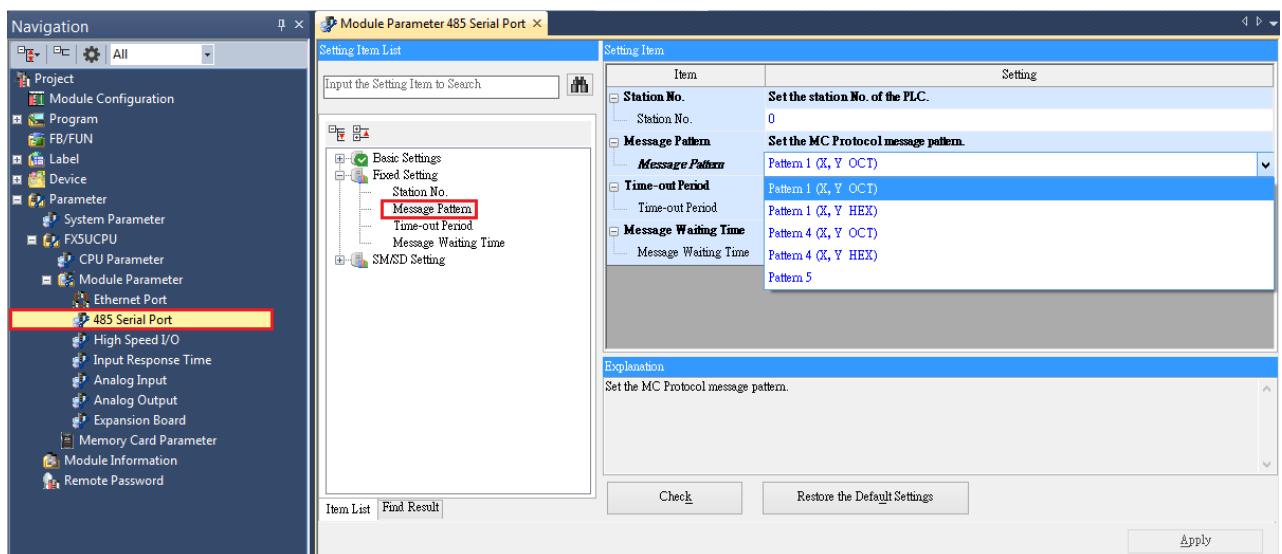
\*Note1:

Pattern1 (X,Y OCT) = ASCII Mode

Pattern4 (X,Y OCT) = ASCII Mode (CR,LF)

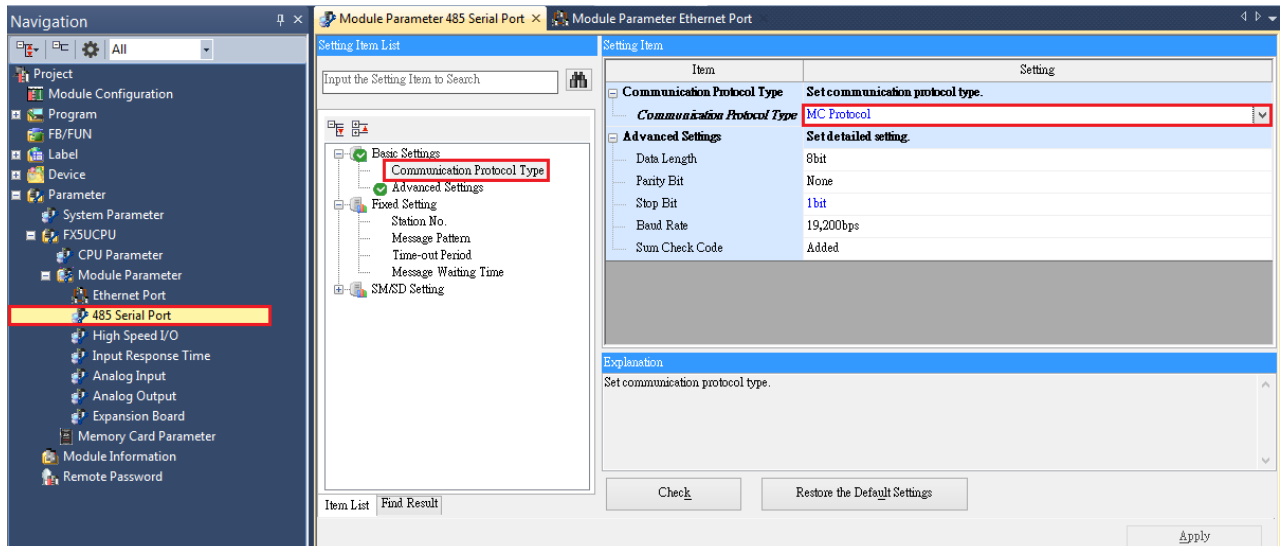
Pattern5 = Binary Mode

Online simulator	YES	Extend address mode	NO
------------------	-----	---------------------	----



## PLC Setting:

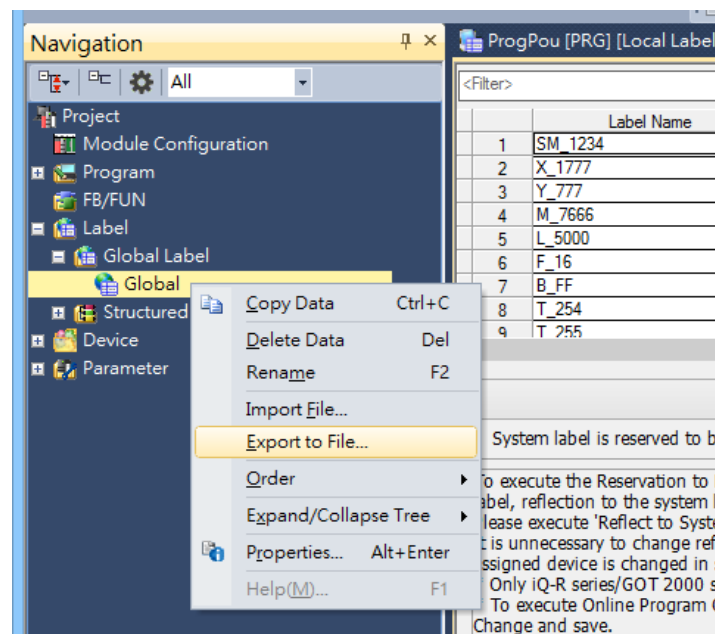
Communication Protocol	MC Protocol
Sum Check Code	Added



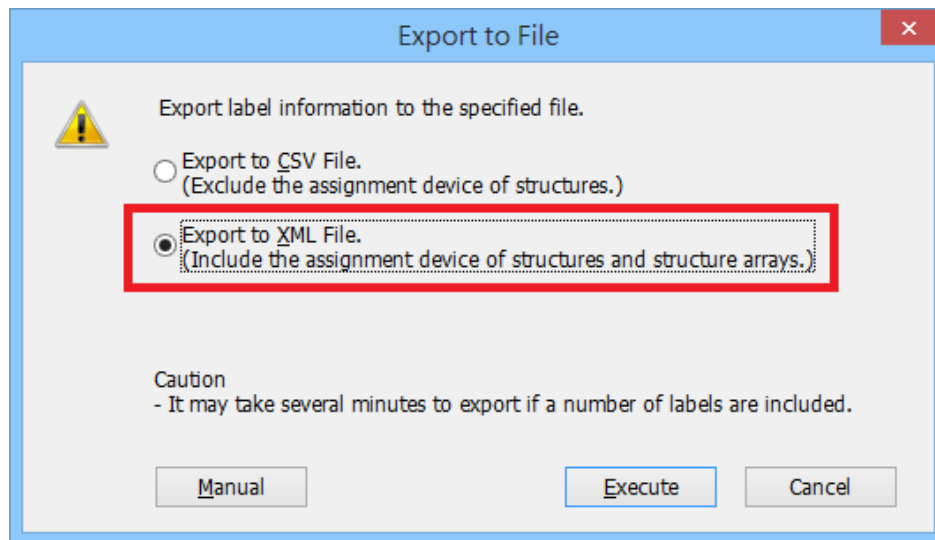
## Import Tags:

### GX Works3 Export Tags:

1. Project -> Label -> Global Label -> Global, right click on the mouse -> Export to File

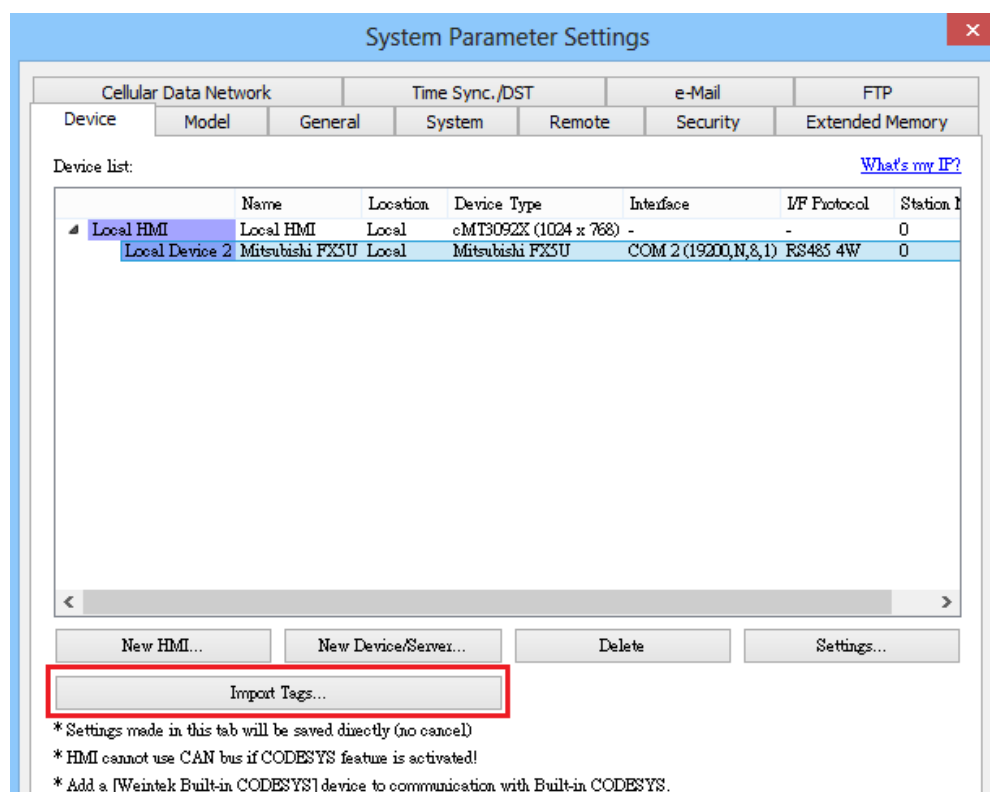


## 2. Export to XML File -> Execute.

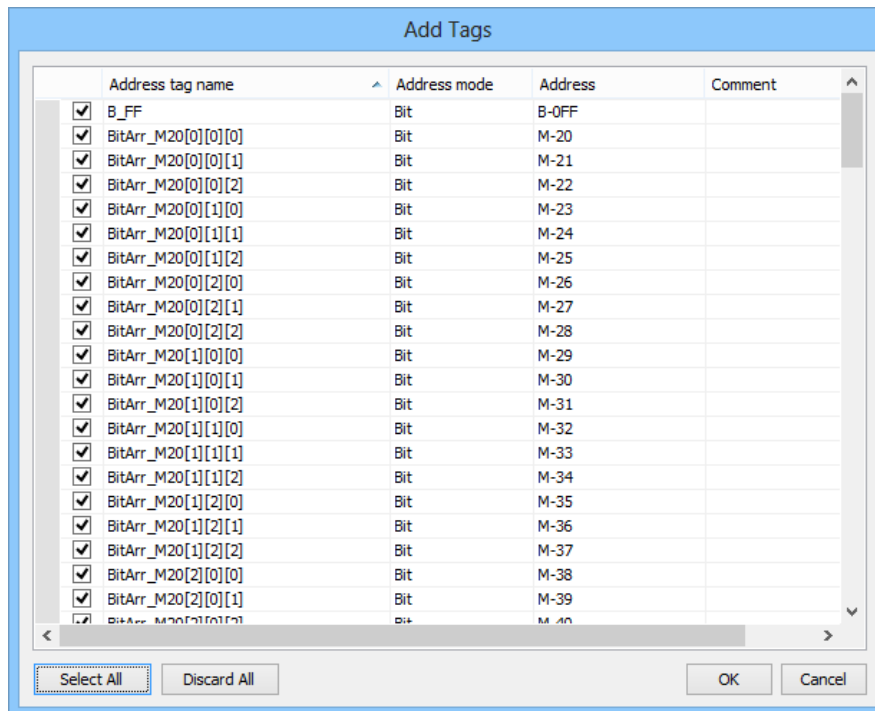


## EasyBuilder Pro Import Tags:

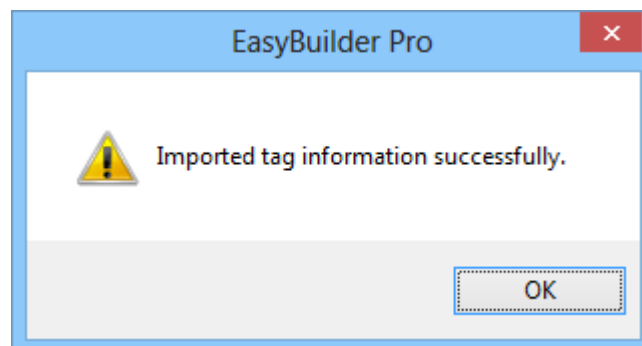
### 1. After setting the [System Parameters] and creating the driver, click [Import Tags].



2. Select the **.XML** file, then select the tag you want to import.



3. Imported tag information successfully.



### Limitations:

1. Structure in structure and array in structure are not supported.
2. If TN, CN, LCN, SN and other addresses are used in the structure, three members of **Contact**, **Coil**, and **Current Value** will be automatically generated
3. The String type will end with 0x00. If the length is set to 16 words, then a complete string will be 17 words in length.

#### 4. Support data type list:

Data Type	Support
Bit	✓
Word [Unsigned] / Bit String [16-bit]	✓
Double Word [Unsigned] / Bit String [32-bit]	✓
Word [Signed]	✓
Double Word [Signed]	✓
FLOAT [Single Precision]	✓
Time	✓
String(32)	✓
Pointer	✗
Timer	✓
Counter	✓
Long Counter	✓
Retentive Timer	✓

#### Device Address:

Bit/Word	Device	Format	Range	Memo
B	LCS	DDDD	0 ~ 1023	Long counter Contact * <b>Note1</b>
B	LCC	DDDD	0 ~ 1023	Long counter Coil * <b>Note1</b>
B	SM	DDDD	0 ~ 9999	Special Relay
B	X	OOOO	0 ~ 1777	Input Relay
B	Y	OOOO	0 ~ 1777	Output Relay
B	M	DDDDD	0 ~ 32767	Internal Relay
B	L	DDDDD	0 ~ 32767	Latch Relay
B	F	DDDDD	0 ~ 32767	Annunciator
B	B	HHHH	0 ~ 7FFF	Link Relay
B	TS	DDDD	0 ~ 1023	Timer Contact
B	TC	DDDD	0 ~ 1023	Timer Coil
B	SS	DDDD	0 ~ 1023	Retentive Timer Contact
B	SC	DDDD	0 ~ 1023	Retentive Timer Coil
B	CS	DDDD	0 ~ 1023	Counter Contact
B	CC	DDDD	0 ~ 1023	Counter Coil
B	SB	HHHH	0 ~ 7FFF	Special Link Relay
B	S	DDDD	0 ~ 4095	Step relay
B	D_Bit	DDDDh	0 ~ 7999F	Data Register bit
B	SD_bit	DDDDh	0 ~ 11999F	Special register Bit
B	R_bit	DDDDh	0 ~ 32767F	File Register Bit

Bit/Word	Device	Format	Range	Memo
B	SW_bit	HHHHh	0 ~ 7FFFF	Special Link Register Bit
B	W_bit	HHHHh	0 ~ 7FFFF	Link Register Bit
DW	LCN	DDDD	0 ~ 1023	Long counter Current Value <b>*Note1</b>
DW	LZ	D	0 ~ 1	Long Index Register
W	SD	DDDDD	0 ~ 11999	Special register
W	D	DDDD	0 ~ 7999	Data Register
W	R	DDDDD	0 ~ 32767	File Register
W	W	HHHH	0 ~ 7FFF	Link Register
W	TN	DDDD	0 ~ 1023	Timer Current value
W	SN	DDDD	0 ~ 1023	Retentive Timer Current value
W	CN	DDDD	0 ~ 1023	Counter Current value
W	SW	HHHH	0 ~ 7FFF	Special Link Register
W	Z	DD	0 ~ 19	Index Register

**\*Note1: ASCII mode does not support LCS, LCC, LCN**

## Wiring Diagram:

### RS-485 4W

The serial port pin assignments may vary between HMI models, please click the following link for more information.

