

## KW ProConOS (Symbolic Addressing)

Supported Series: KW ProConOS

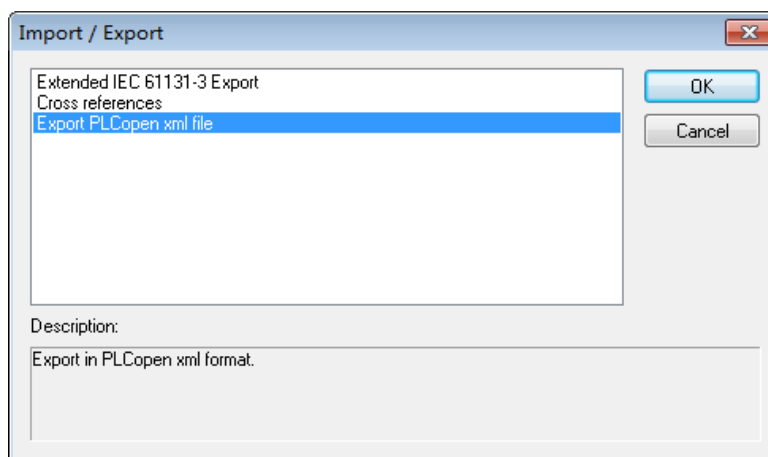
Website: <https://www.phoenixcontact.com/online/portal/pc>

### HMI Setting:

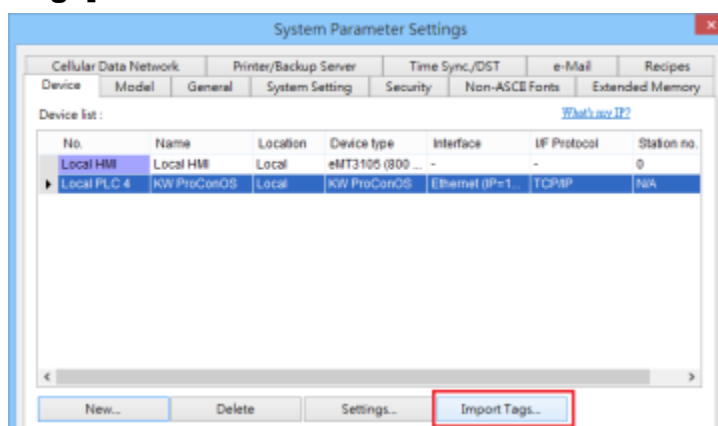
Parameters	Recommended	Options	Notes
PLC type	KW ProConOS (Symbolic Addressing)		
PLC I/F	Ethernet		
Port no.	41101		

### Import Tags:

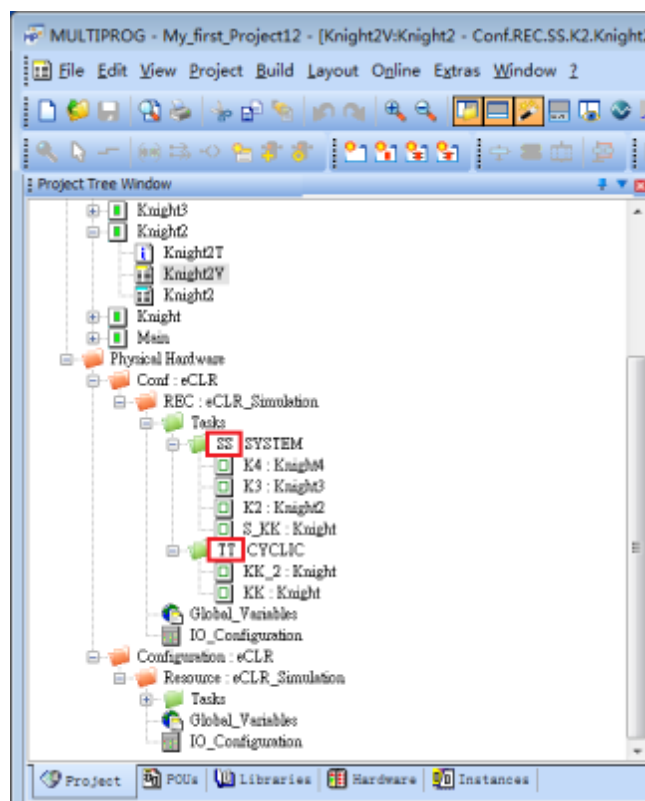
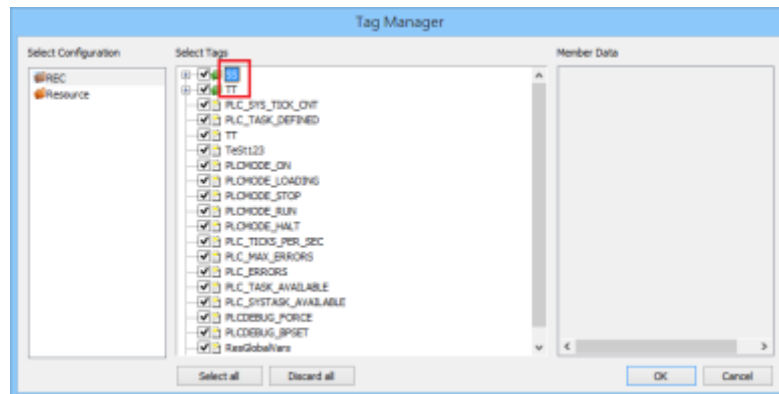
1. **Export tags:** Launch **MULTIPROG** software, select **File -> Export -> Export PLCopen xml file**.



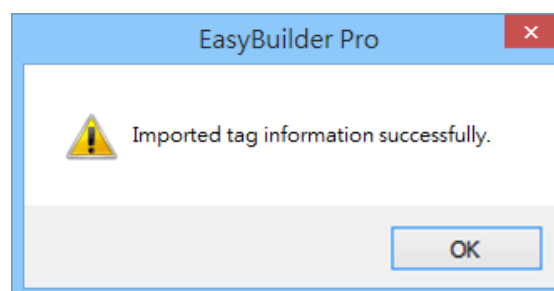
2. Launch **EasyBuilder Pro**, select **KW ProConOS** driver, set communication parameters, and then click **[Import Tags]**.



3. Select the imported .xml file, select the tags and then enter **task name** manually.  
Entering incorrect name can result in communication failure.



4. Click OK, the “Import tag information successfully.” message shows.



## Support Device Type:

Data type	EasyBuilder data format	Memo
Bool	bit	
Byte	16-bit BCD, Hex, Binary, Unsigned	8-bit
SInt	16-bit BCD, Hex, Binary, Signed	8-bit
USInt	16-bit BCD, Hex, Binary, Unsigned	8-bit
Word	16-bit BCD, Hex, Binary, Unsigned	16-bit
Int	16-bit BCD, Hex, Binary, Signed	16-bit
UInt	16-bit BCD, Hex, Binary, Unsigned	16-bit
DWord	32-bit BCD, Hex, Binary, Unsigned	32-bit
DInt	32-bit BCD, Hex, Binary, Signed	32-bit
Real	32-bit Float	32-bit
UDInt	32-bit BCD, Hex, Binary, Unsigned	32-bit

## Wiring Diagram:

Ethernet cable:

