

VIPA 300S, for ex. 315-4NE12 (Ethernet)

HMI Setting:

Parameters	Recommended	Options	Notes
PLC type	VIPA 300S, for ex. 315-4NE12 (Ethernet)		
PLC I/F	Ethernet		
Port no.	102		
PLC sta. no.	1	0-31	

Device Address:

Bit/Word	Device type	Format	Range	Memo
B	I	DDDDo	0 ~ 99997	Input (I)
B	Q	DDDDo	0 ~ 99997	Output (O)
B	M	DDDDo	0 ~ 99997	Bit Memory
B	DBnBit	FFFFFDDDDo	0 ~ 6553599997	Data Register Bit
B	DBxBit	FFFFFDDDDDo	0 ~ 10700655327	
B	DB0Bit-DB99Bit	DDDDDo	0 ~ 655357	Data Register Bit
W	IW	DDDD	0 ~ 9999	Input (I)
W	QW	DDDD	0 ~ 9999	Output (O)
W	MW	DDDD	0 ~ 9999	Bit Memory
DW	MD	DDDD	0 ~ 9998	Bit Memory Double
DW	MD_Anyaddr	DDDD	0 ~ 9998	Bit Memory Double Word
W	DBn	FFFFFDDDD	0 ~ 40969999	Data Register (must be even)
DW	DBDn	FFFFFDDDD	0 ~ 655359999	Data Register Double Word
W	DBn_String	FFFFFDDDD	0 ~ 655359999	
DW	DBDn_String	FFFFFDDDD	0 ~ 655359999	DW
W	DB0 ~ DB99	DDDDDD	0 ~ 65535	Data Register (must be even)
Byte	MB	DDDD	0 ~ 9999	Bit Memory Byte
Byte	DBBn	FFFFFDDDD	0 ~ 655359999	Data Register Byte
Byte	DBBx	FFFFFDDDDDD	0 ~ 1070065535	
W	DBx	FFFFFDDDDDD	0 ~ 1070065535	
DW	DBDx	FFFFFDDDDDD	0 ~ 1070065535	

DW	DBDn_Anyaddr	FFFFFDDDD	0 ~ 655359999	Data Register Double
W	DBx_String	FFFFFDDDD	0 ~ 1070065535	
W	DBn_String1	FFFFFDDDD	0 ~ 655359999	
W	DBx_String1	FFFFFDDDD	0 ~ 1070065535	
DW	DBDx_String	FFFFFDDDD	0 ~ 1070065535	

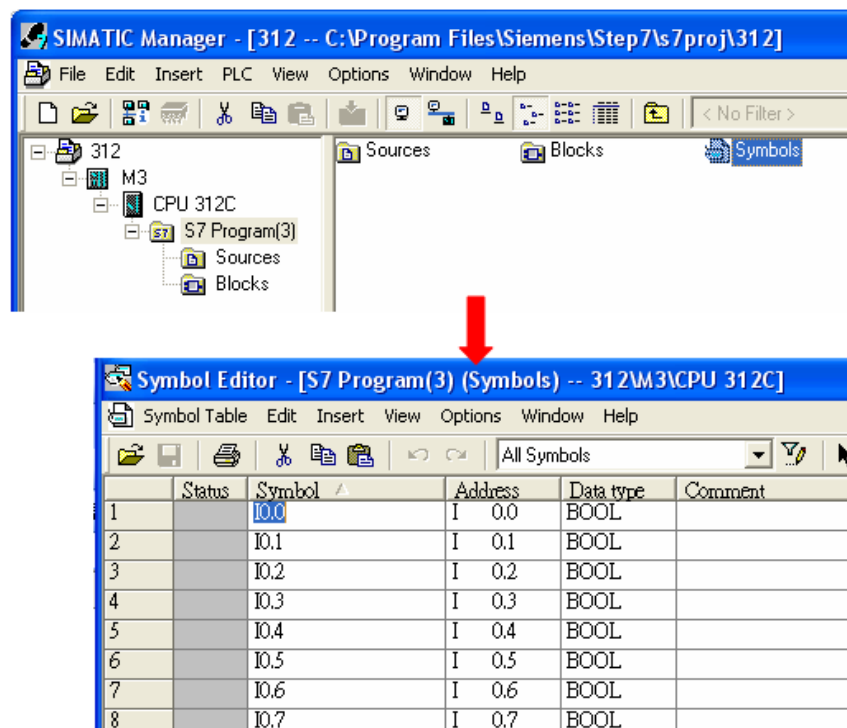
- Double word and floating point value must use DBDn device type.

How to Import Tag:

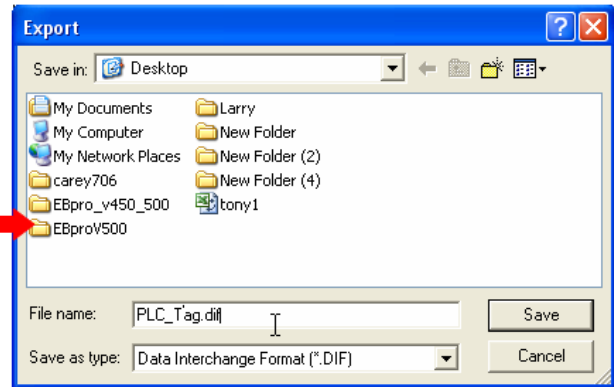
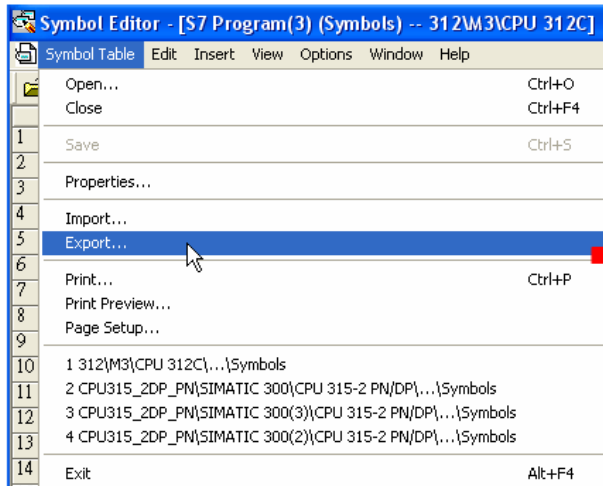
SIEMENS STEP 7 program allows building files of user-defined tag (*.dif file and *.AWL file), and import these files in EasyBuilder8000/EasyBuilderPro -> System Parameter Settings. The following describes how to build and import these two types of files.

1. Building *.dif File

- In "Symbols" create user-defined tag.

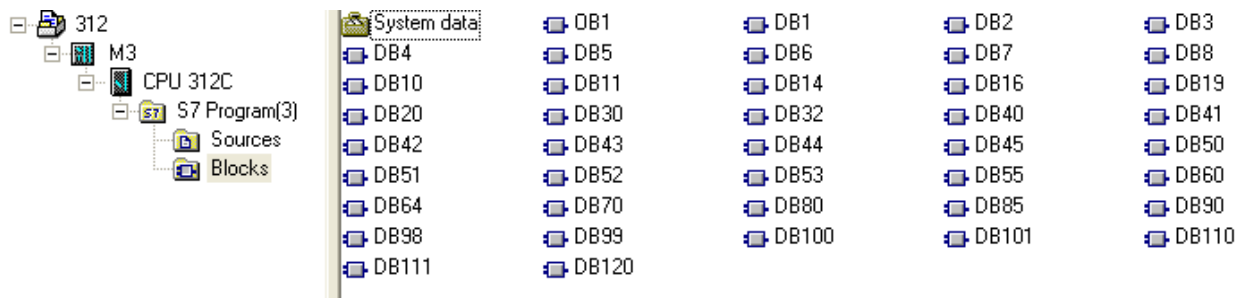


- Click **Export** to export the edited file and click **Save**.

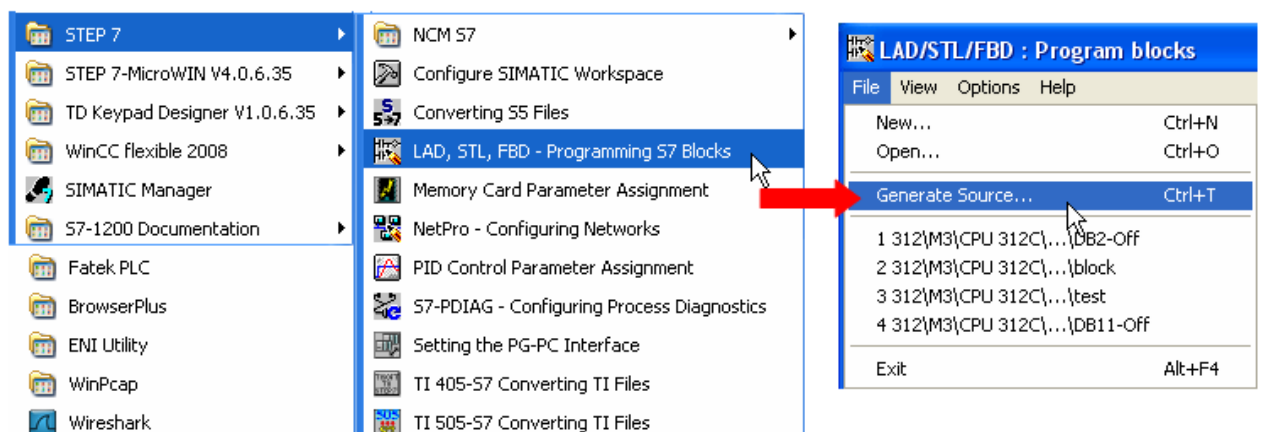


2. Building *.AWF File

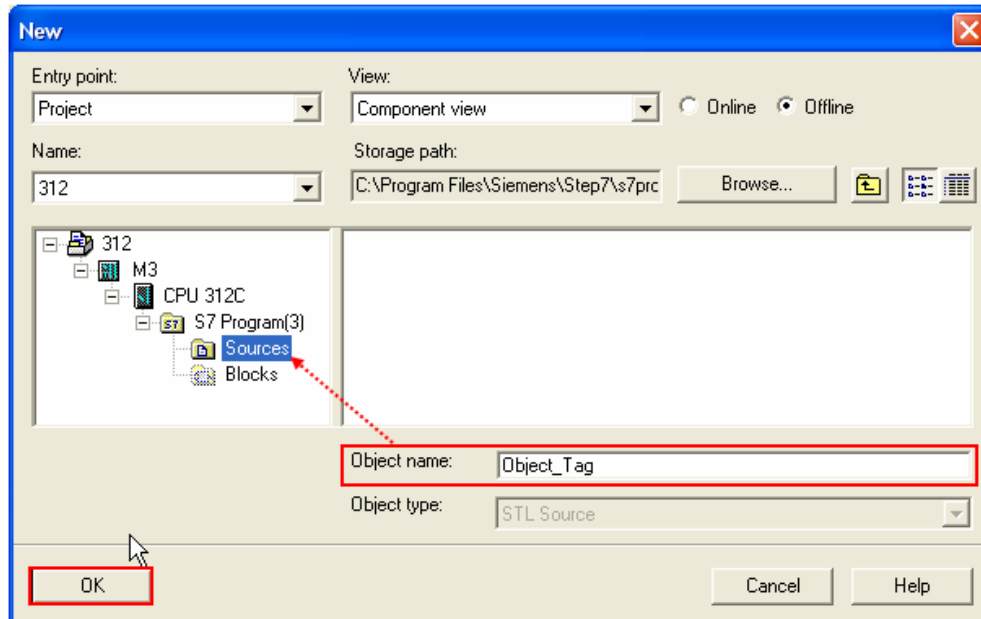
a、 In **Blocks** create items as shown below:



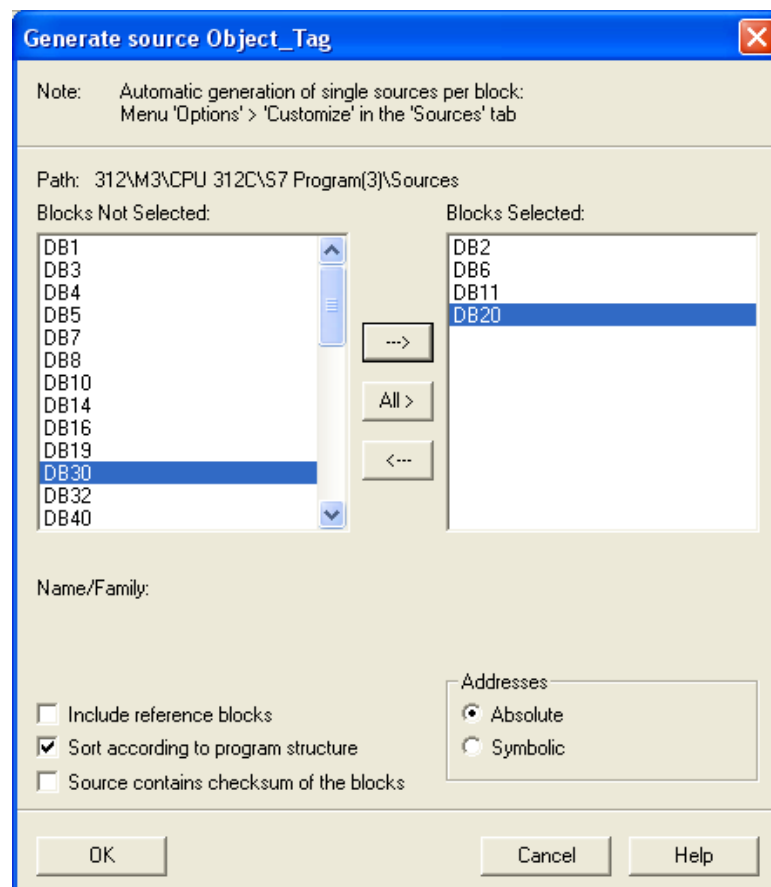
b、 Open **LAD/STL, FBD – Programming S7 Blocks**, click **File -> Generate Source**.



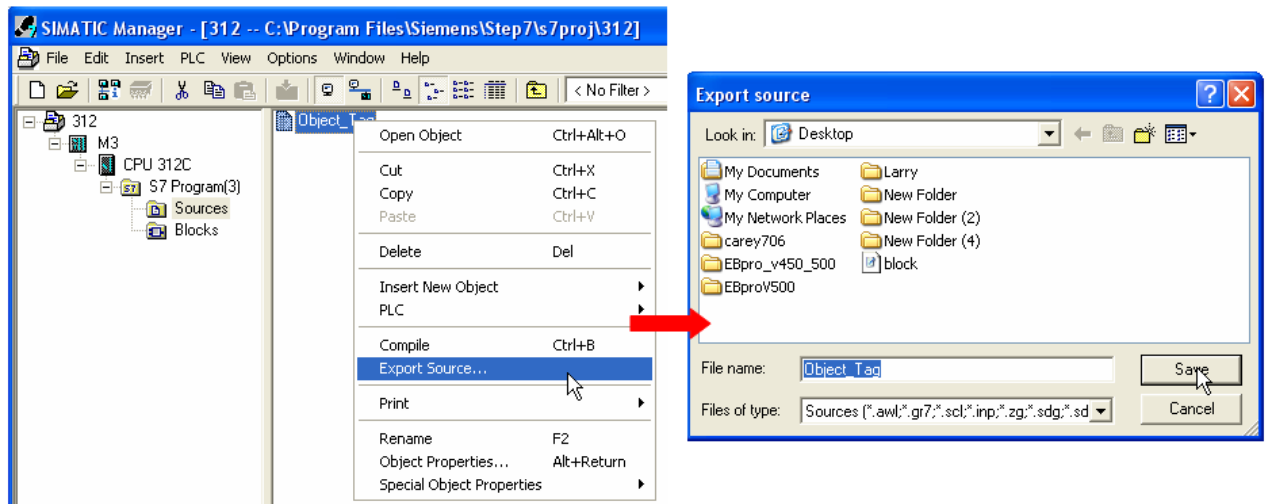
- c、 Select **Sources** as storage path, specify the file name then click **OK**.



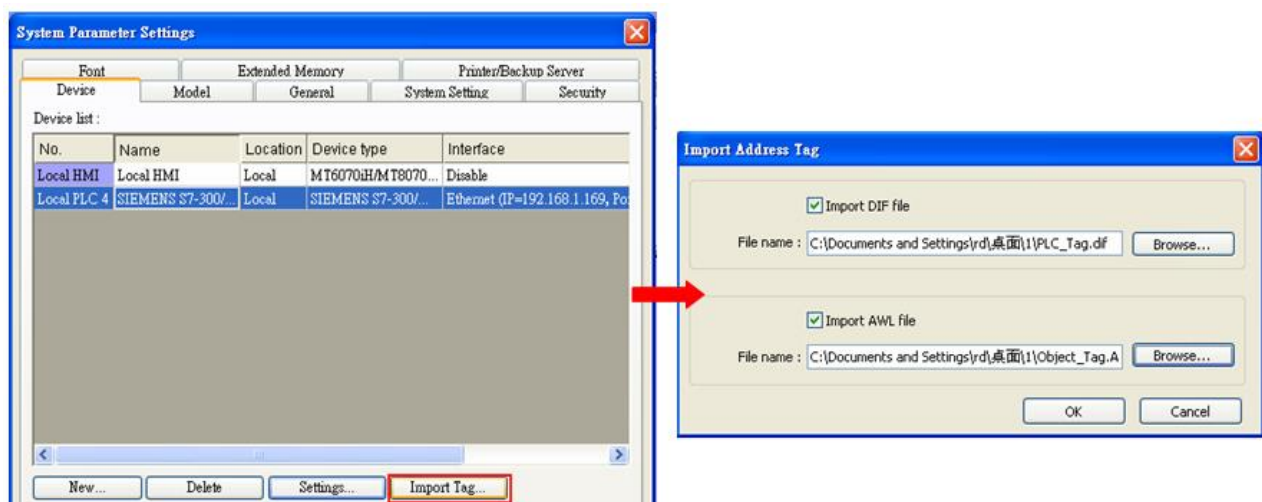
- d、 Select the objects to be exported then click **OK**



- e、 Under **Sources** there will be names of the saved files, select **Export Source** to build *.AWL file.



The generated *.dif and *.AWL files can be imported in EasyBuilder8000/EasyBuilderPro **System Parameter Settings**, by clicking **Import Tag**.



Tag information successfully imported.



Wiring Diagram:

Ethernet cable:

