

# Bosch Rexroth SIS (Symbolic Addressing)

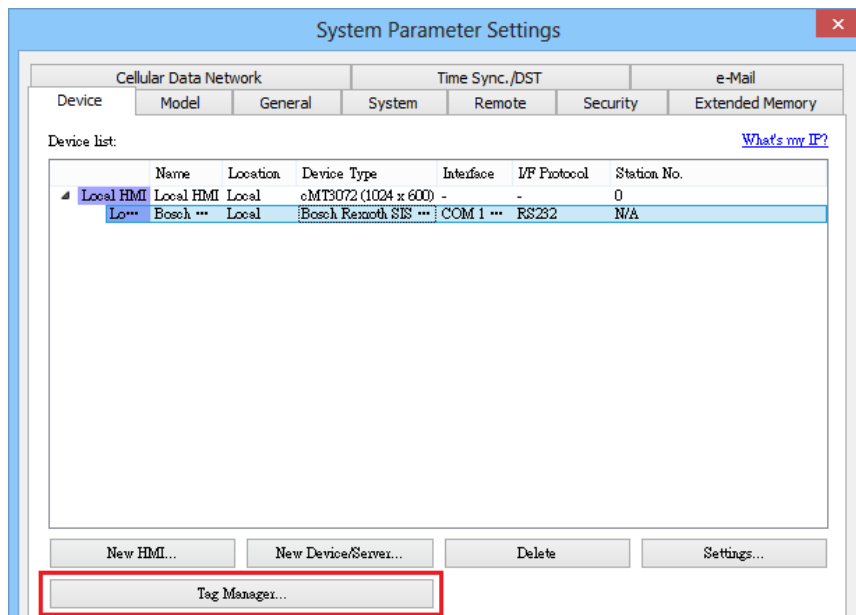
Supported Series: IndraDrive HCS02

## HMI Setting:

| Parameters | Recommended                             | Options | Notes |
|------------|-----------------------------------------|---------|-------|
| PLC type   | Bosch Roxroth SIS (Symbolic Addressing) |         |       |
| PLC I/F    | RS232                                   |         |       |
| Baud rate  | 38400                                   |         |       |
| Data bits  | 8                                       |         |       |
| Parity     | None                                    |         |       |
| Stop bits  | 1                                       |         |       |

## How to Import Tags:

1. Click **[New]** to add **[Bosch Roxroth SIS (Symbolic Addressing)]** driver, and then click **[Tag Manager]**.



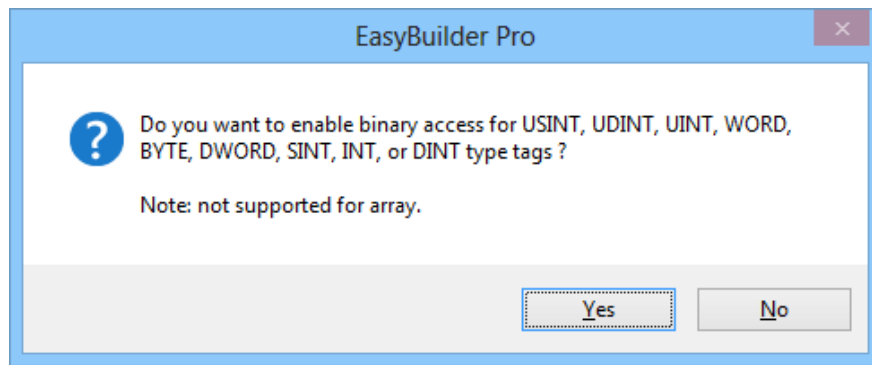
2. Select the tag **(.SYM\_XML)** file to be imported.

How to generate \*.SYM\_XML:

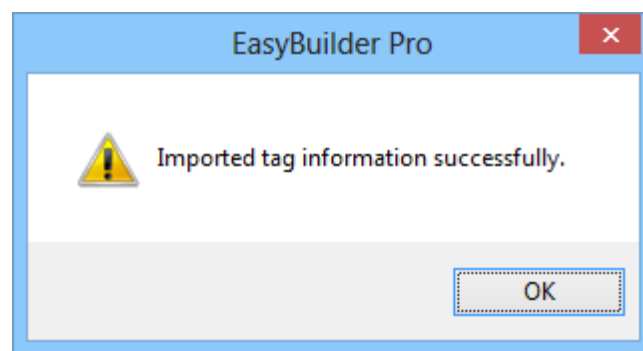
step1. **[Project]** -> **[Options]** -> **[Symbol configuration]** , select **[Dump symbol entries]** and **[Dump XML symbol table]**.

step2. Open **[Configure symbol file]**, select **[Export data entries]**

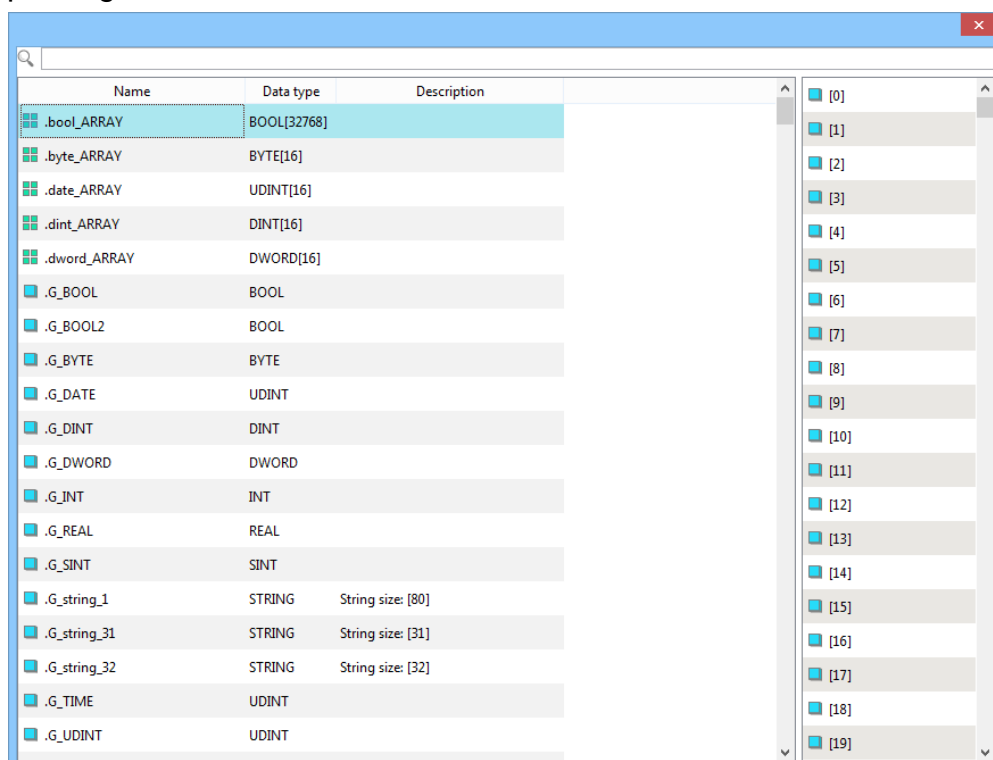
3. Choose whether to enable the binary access function.



4.Imported tag information successfully.



4. Display import tag information.



## Wiring Diagram:

### RS-232 (CM1-SC02A: 9P D-Sub)

The serial port pin assignments may vary between HMI models, please click the following link for more information.

