

Weintek Remote IO (MODBUS TCP/IP)

Supported Series: Weintek Remote IO (iR-ETN)

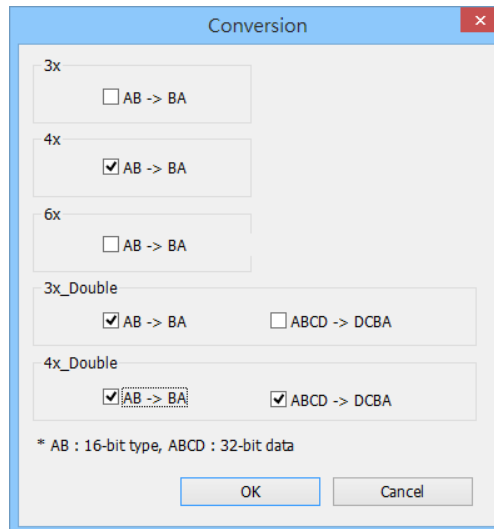
HMI Setting:

Parameters	Recommended	Options	Notes
PLC type	Weintek Remote IO (MODBUS TCP/IP)		
PLC I/F	Ethernet		
Port no.	502		
PLC sta. no.	1	0~255	

Device Address:

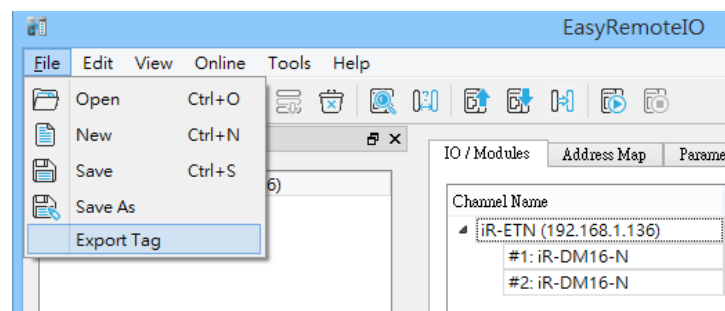
Bit/Word	Device type	Format	Range	Memo
B	0x	DDDDDD	0 ~ 65535	Output bit
B	0x_single_Bit	DDDDDD	0 ~ 65535	
B	0x_multi_coils	DDDDDD	0 ~ 65535	Write multiple coils
B	1x	DDDDDD	0 ~ 65535	Input bit (read only)
B	1x_single_Bit	DDDDDD	0 ~ 65535	
B	3x_bit	DDDDDDdd	0 ~ 6553515	Input Register bit(read
B	4x_bit	DDDDDDdd	0 ~ 6553515	Output Register bit
B	6x_bit	DDDDDDdd	0 ~ 6553515	Output Register bit
W	3x	DDDDDD	0 ~ 65535	Input Register
DW	3x_Double	DDDDDD	0 ~ 65535	*Note1
W	4x	DDDDDD	0 ~ 65535	Output Register
DW	4X_Double	DDDDDD	0 ~ 65535	*Note1
DW	5x	DDDDDD	0 ~ 65535	4x double word swap
W	6x	DDDDDD	0 ~ 65535	4x single word write
W	4x string central europe	DDDDDD	0 ~ 65535	Convert the Central Europe ASCII to Unicode.
W	4x string central europe (rev)	DDDDDD	0 ~ 655355	

Note1: Go the [System Parameter Settings] -> [Device Properties] and click [Conversion] to set the data format of device types 3x, 4x, 6x, 3x_double, 4x double.

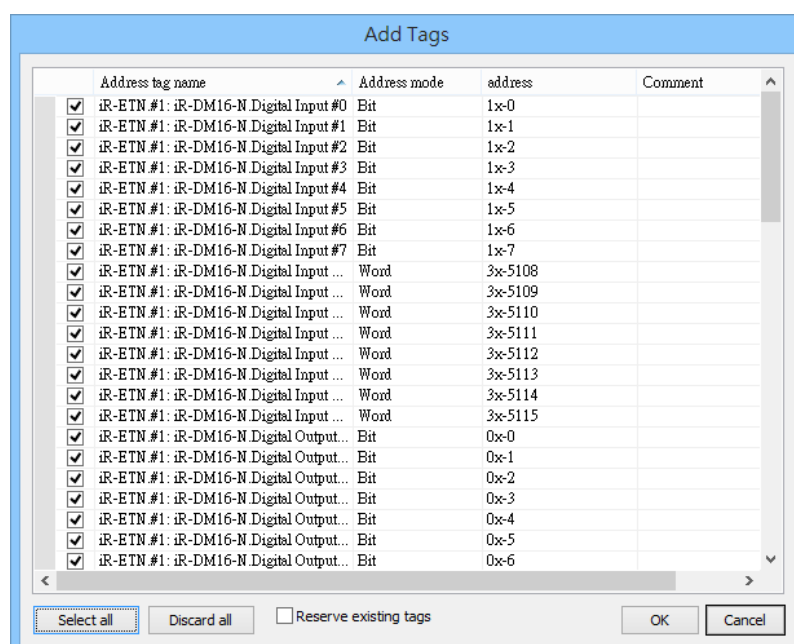


How to Import Tags:

Step1. EasyRemoteIO export tag



Step2. EasyBuilder Pro -> System Parameter Settings -> Device (Driver) -> Import Tags



Wiring Diagram:

Diagram 1

Ethernet cable:

