

Mitsubishi M70 (Ethernet)

Supported Series : Mitsubishi M70 (QJ71E71+Q04A CPU)

Website: <http://www.mitsubishi-automation.com>

HMI Setting:

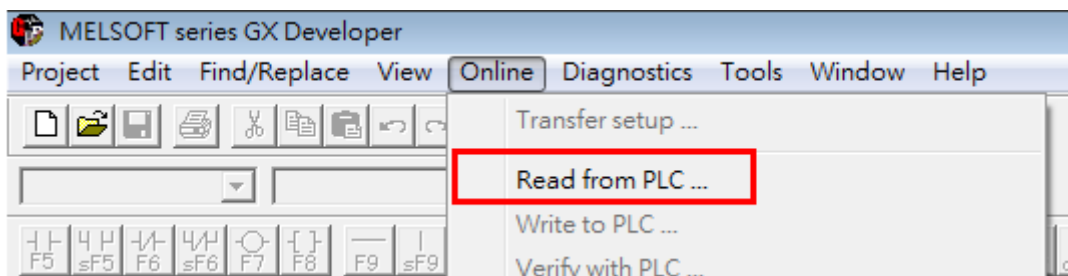
| Parameters | Recommended | Options | Notes |
|------------|---------------------------|---------|-------|
| PLC type | Mitsubishi M70 (Ethernet) | | |
| PLC I/F | Ethernet | | |
| Port no. | 5002 | | |

| | | | |
|------------------|-----|----------------|-----|
| Online simulator | YES | EasyAccess 2.0 | YES |
|------------------|-----|----------------|-----|

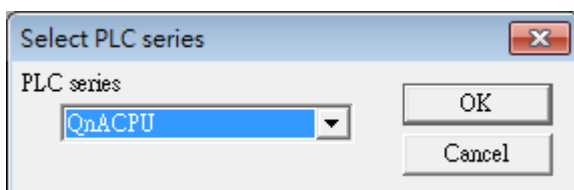
*Only support 1 HMI to 1 PLC for communication.

PLC Setting:

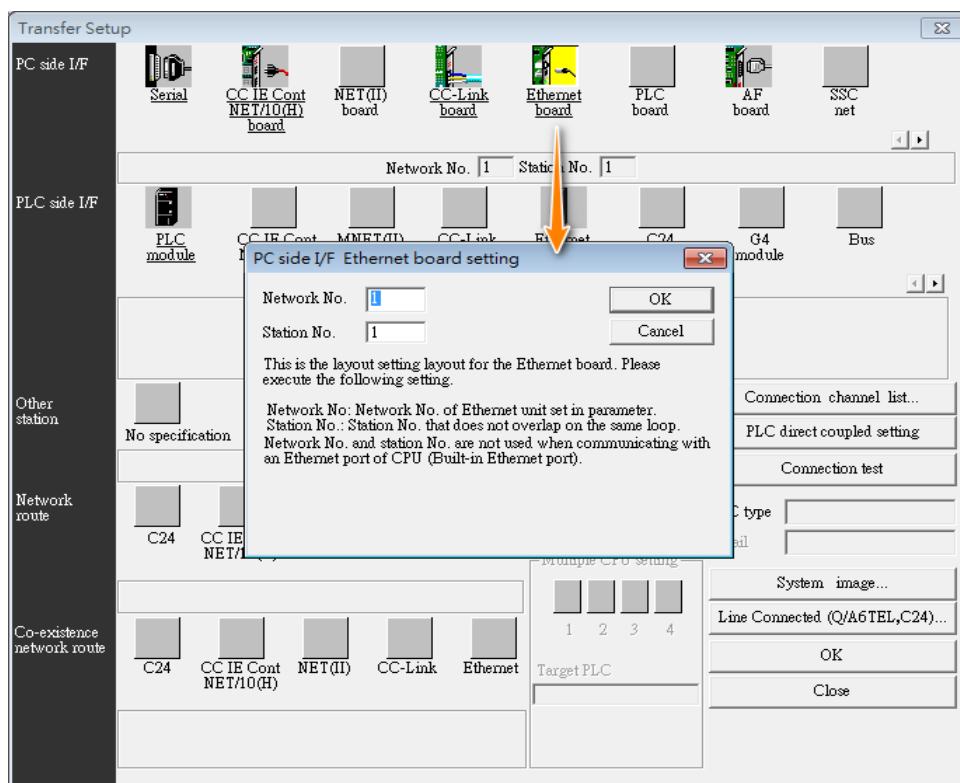
1. GX Developer -> Online -> Read from PLC



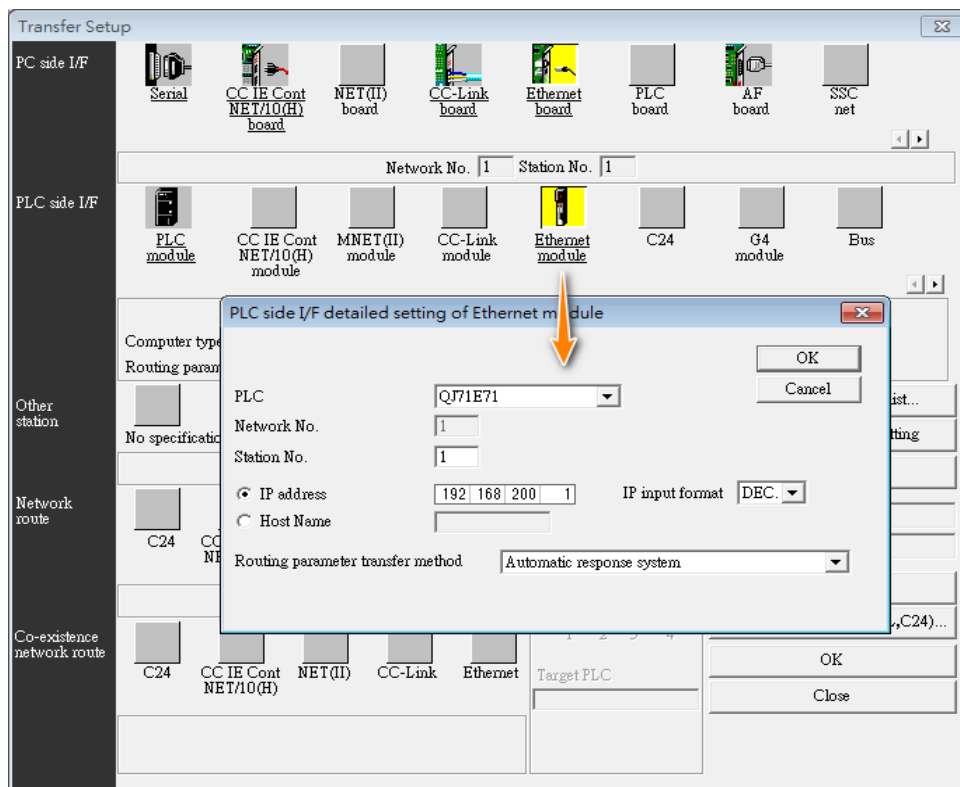
2. Select PLC series -> QnACPU -> OK



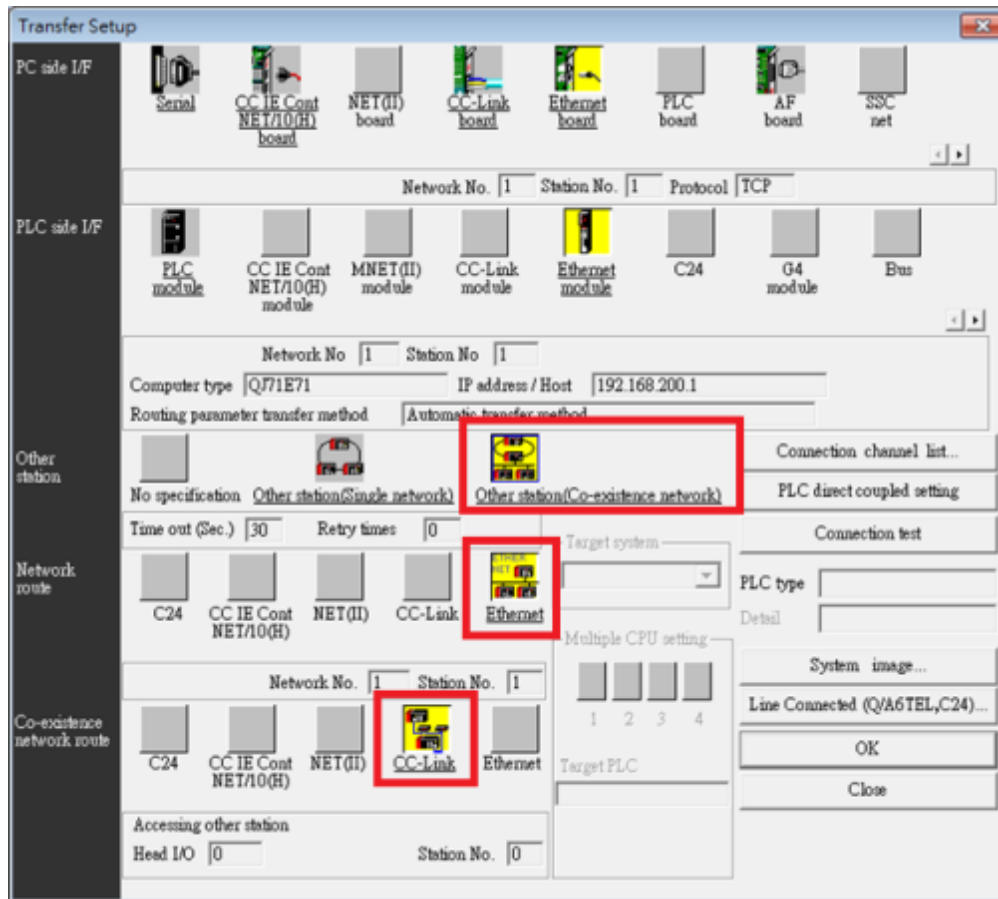
3. Ethernet board -> PC side I/F Ethernet board setting



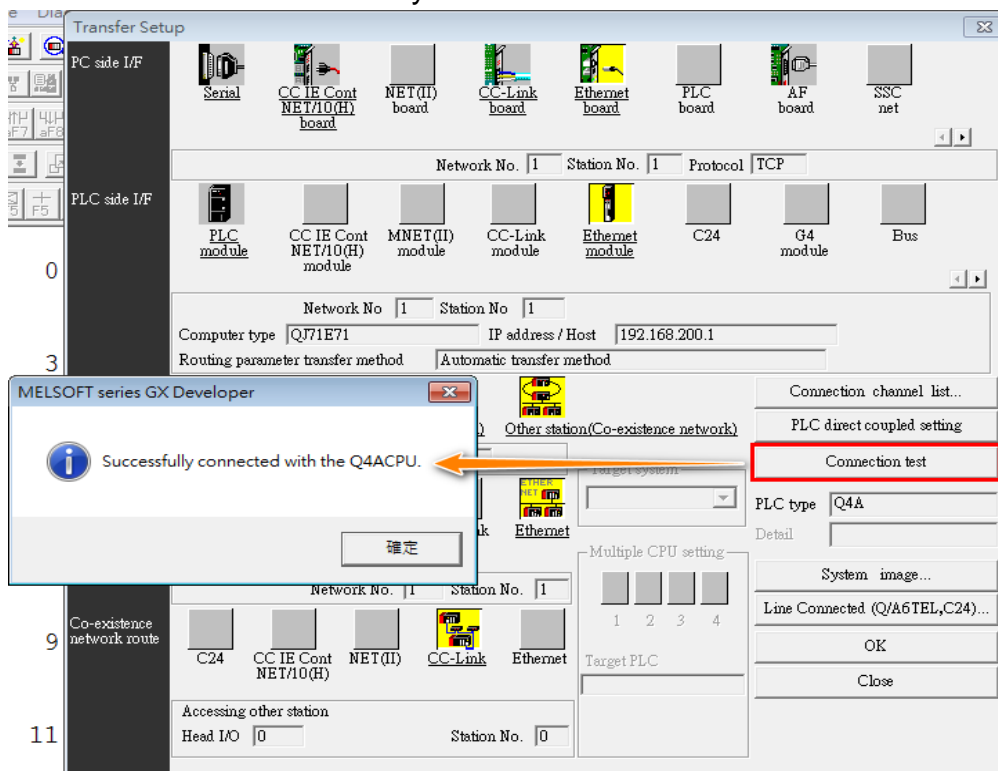
4. Ethernet module -> PC side I/F detailed setting of Ethernet module



5. Other station (Co-existence network) / Ethernet / CC-Link



6. Connection test -> Successfully



Device Address:

| Bit/Word | Device type | Format | Range | Memo |
|----------|-------------|-----------|--------------|-----------------|
| B | X | HHHH | 0 ~ 1fff | |
| B | Y | HHHH | 0 ~ 1fff | |
| B | M | DDDDD | 0 ~ 10239 | |
| B | L | DDDD | 0 ~ 8191 | |
| B | F | DDDD | 0 ~ 2047 | |
| B | V | DDDD | 0 ~ 2047 | |
| B | B | HHHH | 0 ~ 1fff | |
| B | SM | DDDD | 0 ~ 2047 | |
| B | SB | HHH | 0 ~ 7ff | |
| B | DX | HHH | 0 ~ fff | |
| B | DY | HHH | 0 ~ fff | |
| B | D_Bit | DDDDDDh | 0 ~ 12287f | h: bit no.(0~f) |
| B | ZR_Bit | DDDDDDDDh | 0 ~ 1042431f | h: bit no.(0~f) |
| B | TC | DDDD | 0 ~ 2047 | |
| B | TS | DDDD | 0 ~ 2047 | |
| B | CC | DDDD | 0 ~ 1023 | |
| B | CS | DDDD | 0 ~ 1023 | |
| B | STC | DD | 0 ~ 63 | |
| B | STS | DD | 0 ~ 63 | |
| B | D | DDDDD | 0 ~ 12287 | |
| W | W | HHHH | 0 ~ 1fff | |
| W | SW | HHH | 0 ~ 7ff | |
| W | R | DDDDD | 0 ~ 32767 | |
| W | SD | DDDD | 0 ~ 2047 | |
| W | Z | DD | 0 ~ 15 | |
| W | ZR | DDDDDDDD | 0 ~ 1042431 | |
| W | TN | DDDD | 0 ~ 2047 | |
| W | CN | DDDD | 0 ~ 1023 | |
| W | STN | DD | 0 ~ 63 | |

Wiring Diagram:

Ethernet cable:

