

## KEYENCE KV-8000 (Symbolic) (Ethernet)

Supported Series: KEYENCE KV-8000

Website: <http://www.keyence.com/>

### HMI Setting:

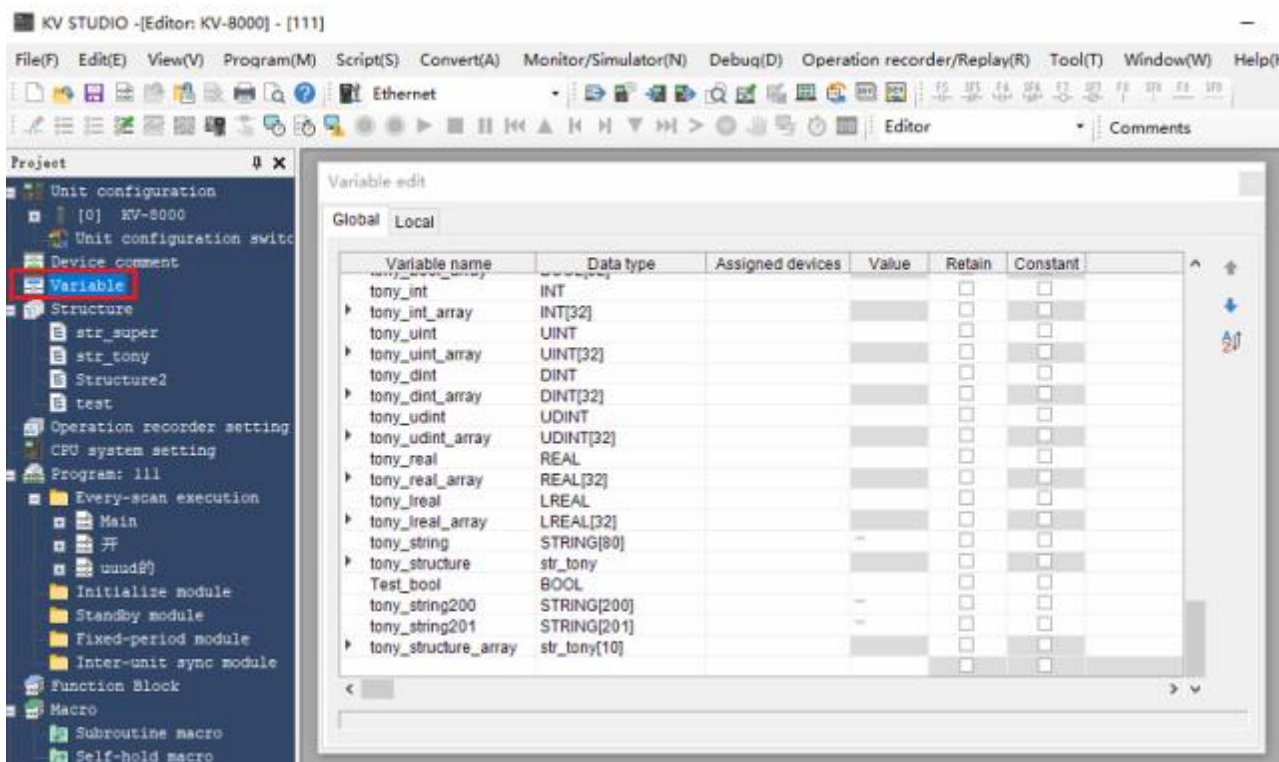
Parameters	Recommended	Options	Notes
PLC type	KEYENCE KV-8000 (Symbolic) (Ethernet)		
PLC I/F	Ethernet		
Port no.	8500		

On-line simulator	Yes	Multi-HMI connect	Yes
-------------------	-----	-------------------	-----

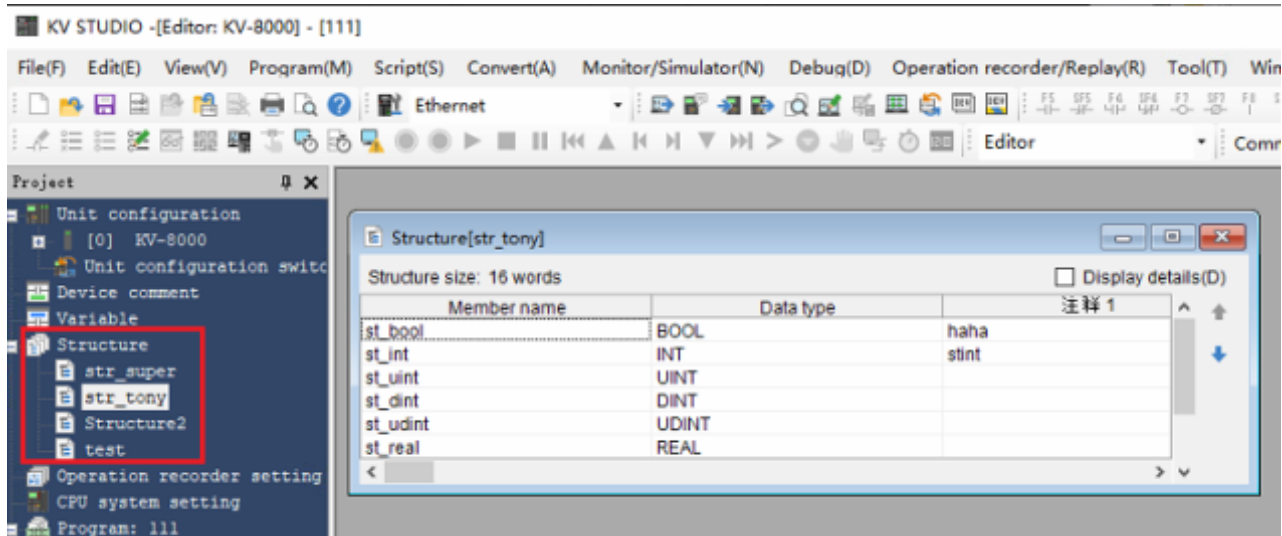
### Export Tags:

Software KV STUDIO creates tag:

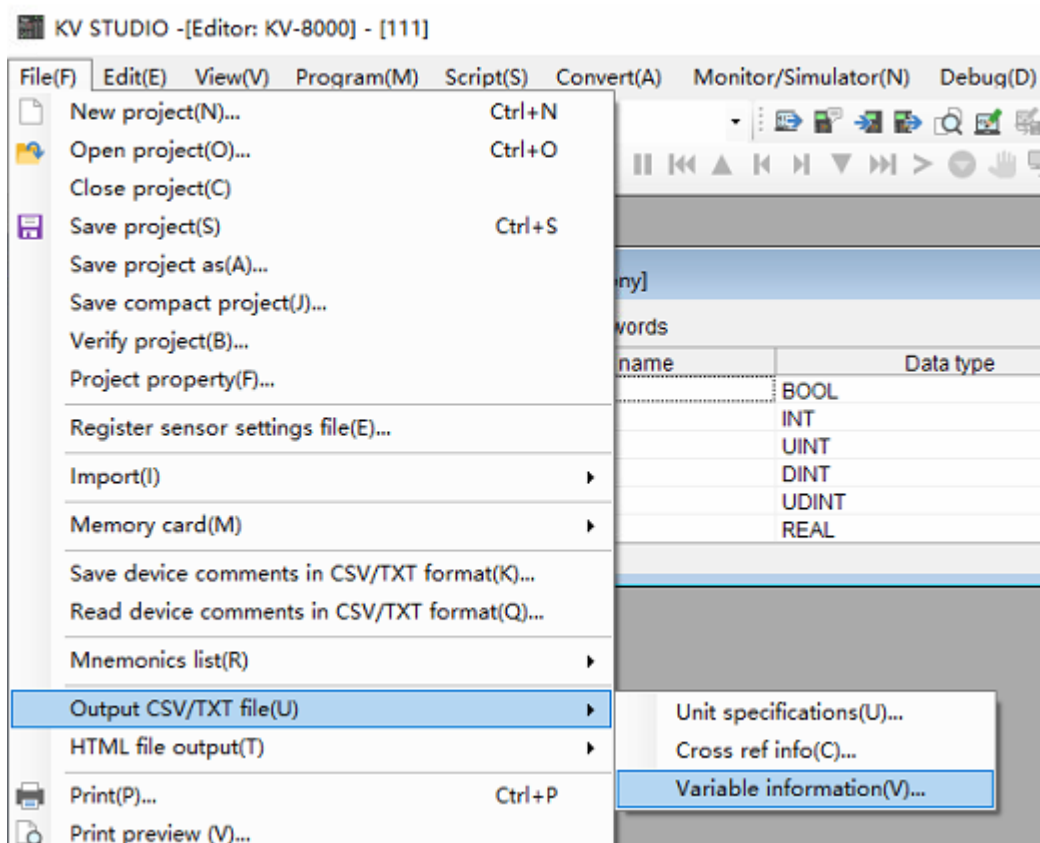
1. **Variable** -> **Global** or **Local**, create tag (Tag name limit cannot exceed 60 characters).



## 2. Support Sturcutre address.

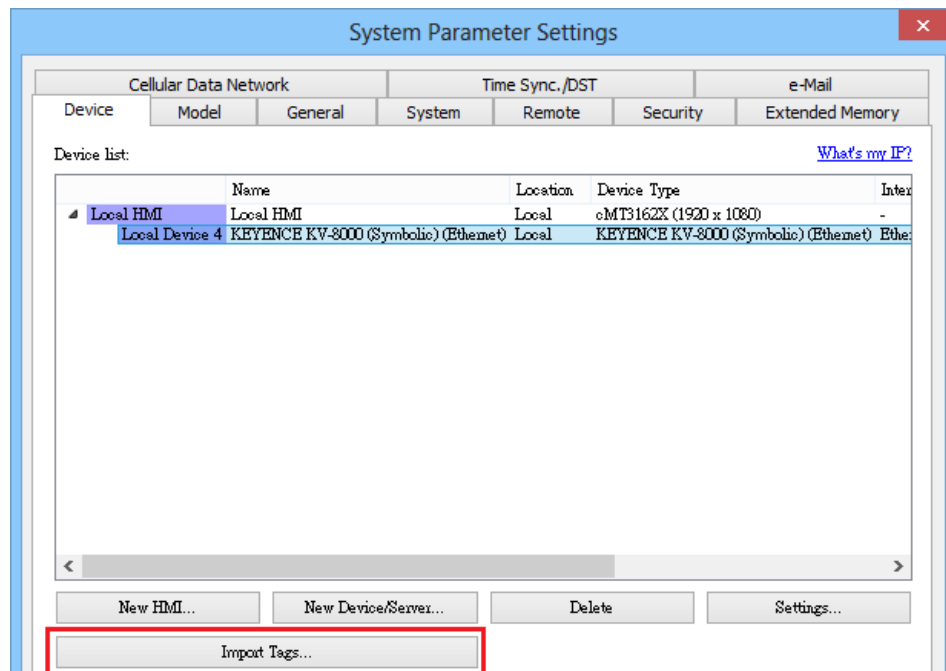


## 3. Export tag: File -> Output CSV/TXT file -> Variable information

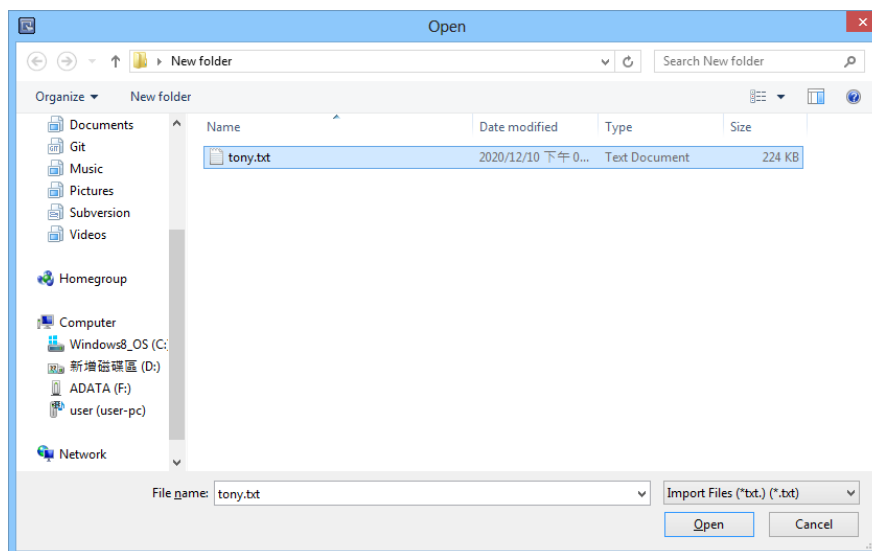


## Import Tags:

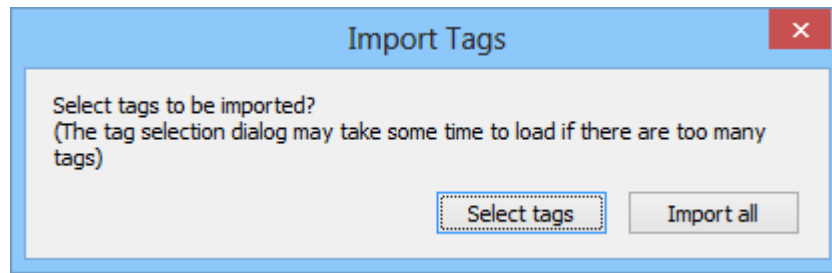
1. In EasyBuilder Pro -> System Parameter Settings -> New Driver (KV-8000) -> Import Tags.



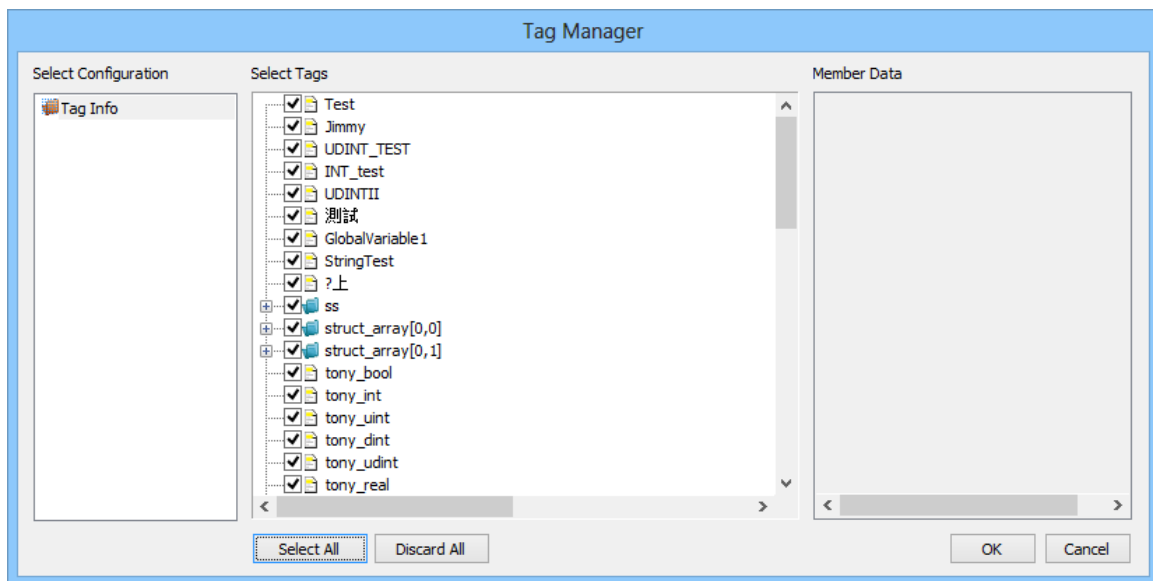
2. Select the .txt file to import.



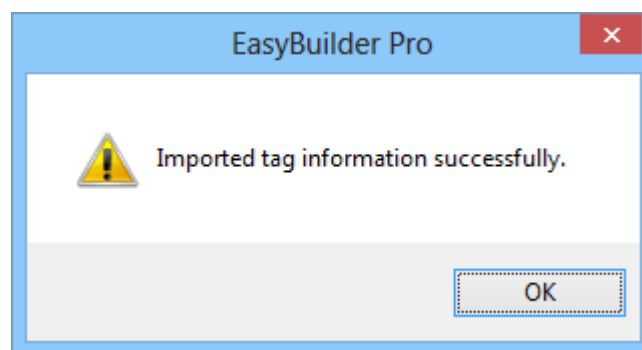
### 3. Import some or all of the tags



### 4. Select the tag you want to import in Tag Manager, press **OK**.



### 5. Imported tag information successfully.

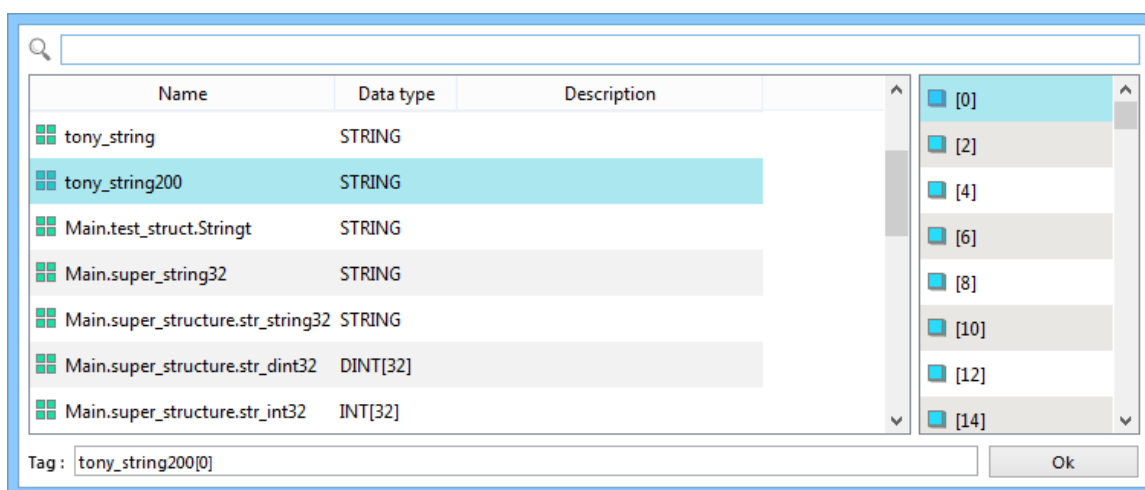


## Support Device Type:

Data type	EasyBuilder data format	Memo
BOOL	bit	
INT	16-bit BCD, Hex, Binary, Signed	16-bit
UINT	16-bit BCD, Hex, Binary, Unsigned	16-bit
DINT	32-bit BCD, Hex, Binary, Signed	32-bit
UDINT	32-bit BCD, Hex, Binary, Unsigned	32-bit
REAL	32-bit Float	32-bit
LREAL	64-bit Float	64-bit *Note1
STRING	Word array for ASCII input and display	*Note2
Array		BOOL, INT, UINT, DINT, UDINT, REAL, LREAL, Structure *Note3
Struct		BOOL, INT, UINT, DINT, UDINT, REAL, LREAL, STRING Array

**Note1:** EBPro V6.03.02 or later supports 64 bits data type (**cMT Series only**), but please note that the address limit range is 48 bits in maximum.

**Note2:** String In EasyBuilder Pro, only even addresses can be selected, and support string length up to 2000.



**Note3:** Support 1~3D array, 4D arrays and above cannot be imported.

## Wiring Diagram:

### Ethernet cable:

