

## Inovance H5U Series (Ethernet)

Supported Series: Inovance H5U Series

Website: <http://www.inovance.cn/>

### HMI Setting:

Parameters	Recommended	Options	Notes
PLC type	Inovance H5U Series (Ethernet)		
PLC I/F	Ethernet		
Port no.	12939		

### Device Address:

Bit/Word	Device type	Format	Range	Memo
B	UB	HHHHHHHH	0 ~ 4C4B400	
W	UW	HHHHHHHH	0 ~ 4C4B400	

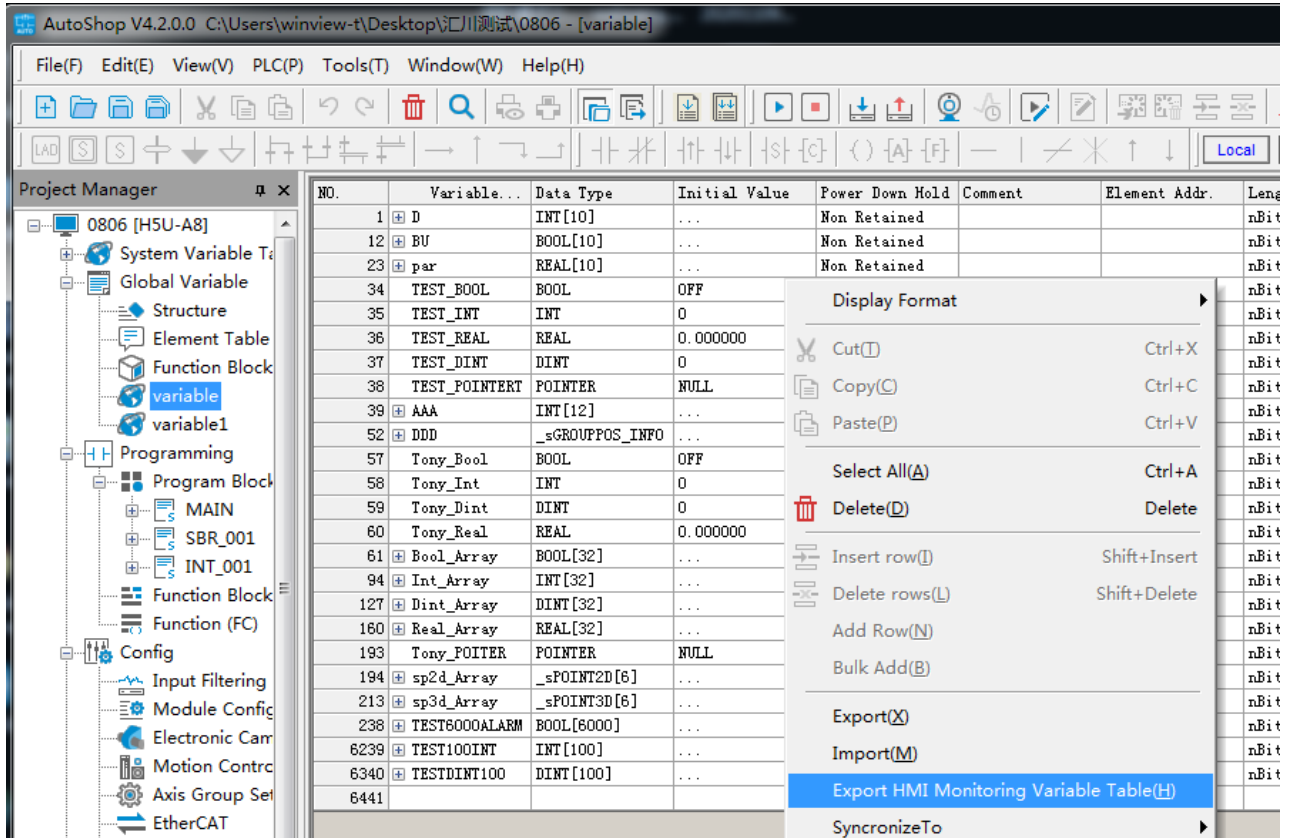
### Support Device Type:

Data type	EasyBuilder data format	Memo
Bool	bit	
Int	16-bit BCD, Hex, Binary, Signed	16-bit
DInt	16-bit BCD, Hex, Binary, Signed	32-bit
Real	32-bit Float	32-bit
Array		Bool, Int, DInt, Real

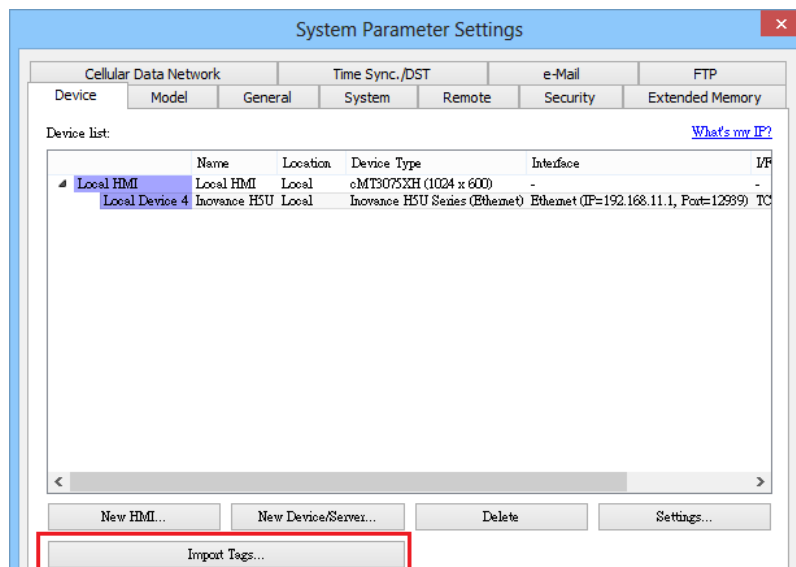
## Import Tags

1.The following instructions use the software as: AutoShop V4.2.0.0

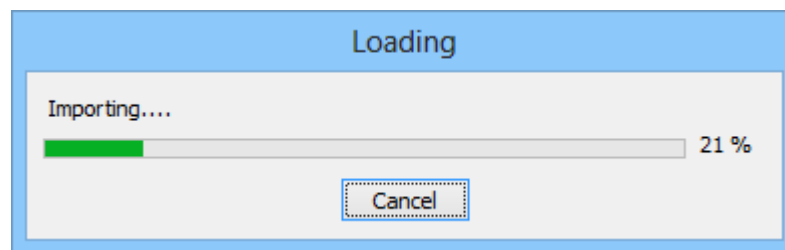
Variable -> Right click -> Export HMI Monitoring Variable Table -> Save CSV File



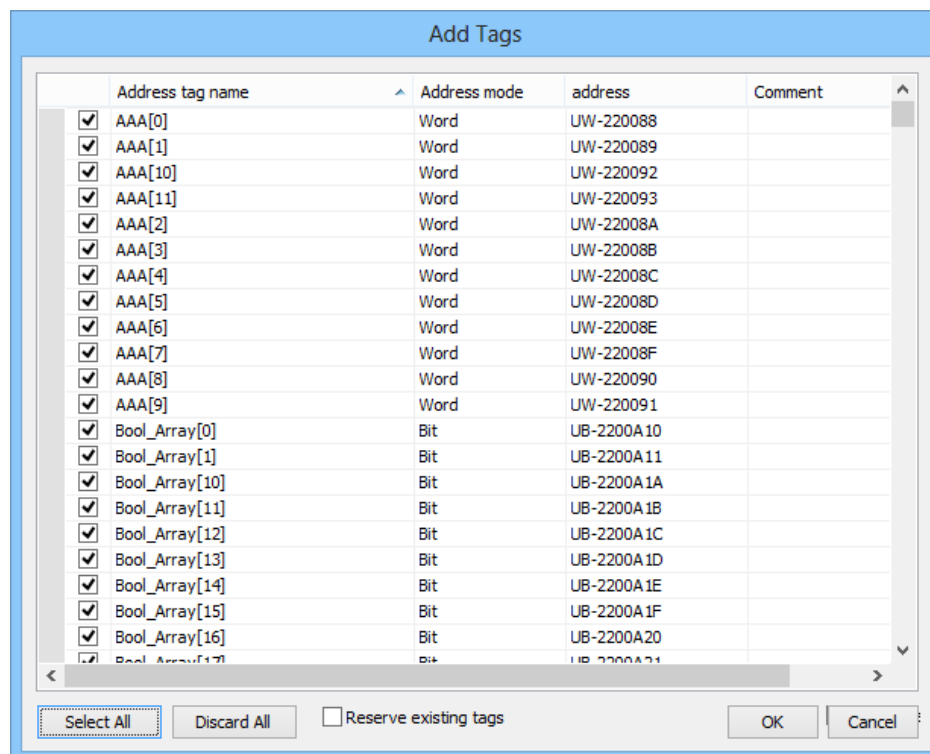
2. EasyBuilder Pro -> System Parameter Settings -> Import Tags (CSV)



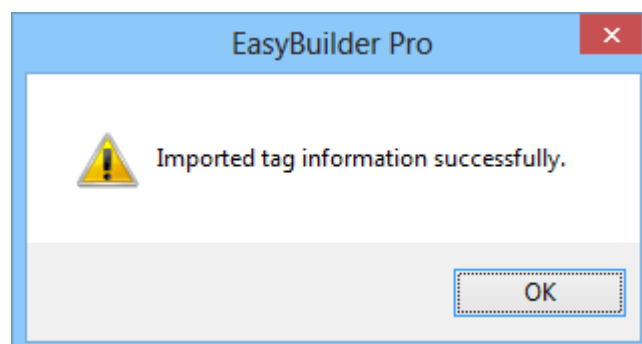
### 3. Loading



### 4. Select the imported tag -> OK



### 5. Imported tag information successfully.



## Wiring Diagram:

### Ethernet cable:

