

Barcode/RFID Reader

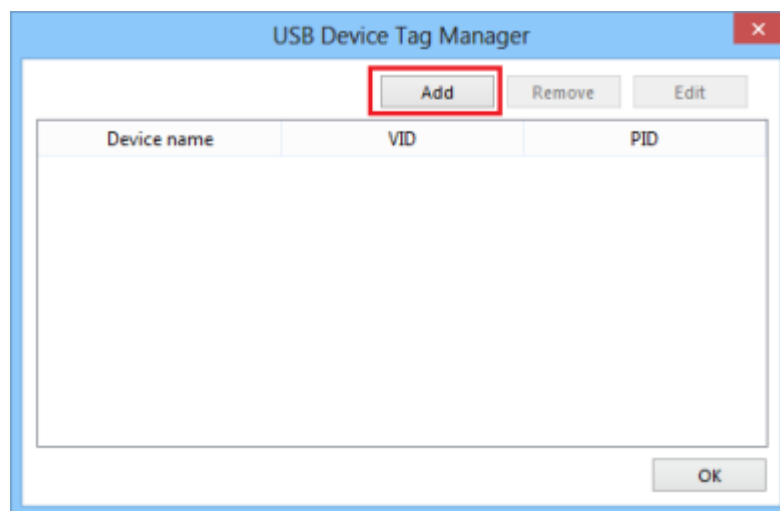
Supported Devices: Barcode Scanner, RFID Reader in interrupt communication mode

HMI Settings:

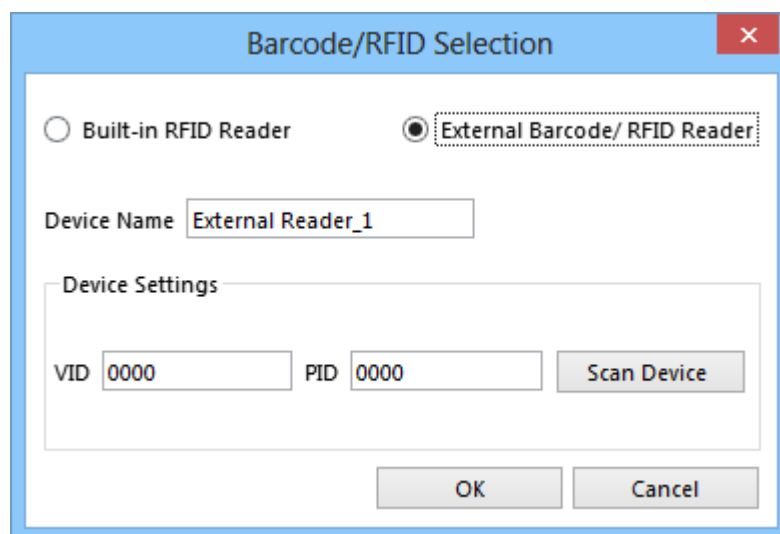
Parameters	Recommended	Options	Notes
PLC type	Barcode/RFID Reader		
PLC I/F	USB		

Tag Manager:

1. Click **[Add]** to add a new device.



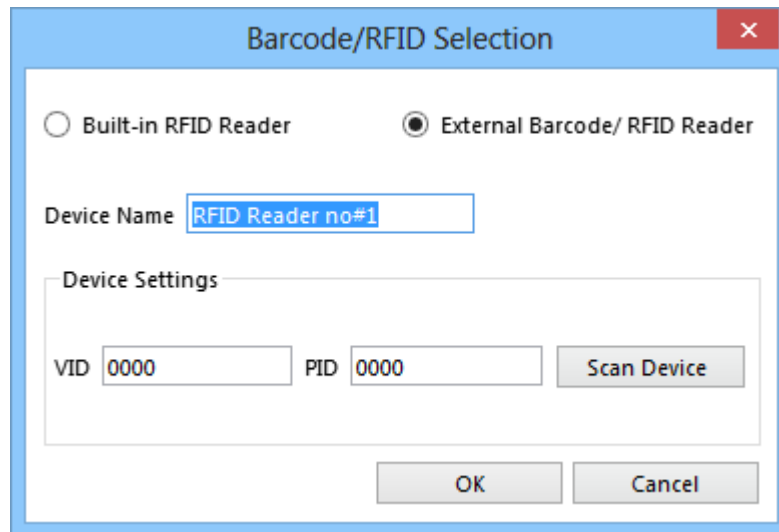
2. Select Built-in RFID Reader or External Barcode/RFID Reader



* Only models supported by the built-in RFID Reader will display this setting item.

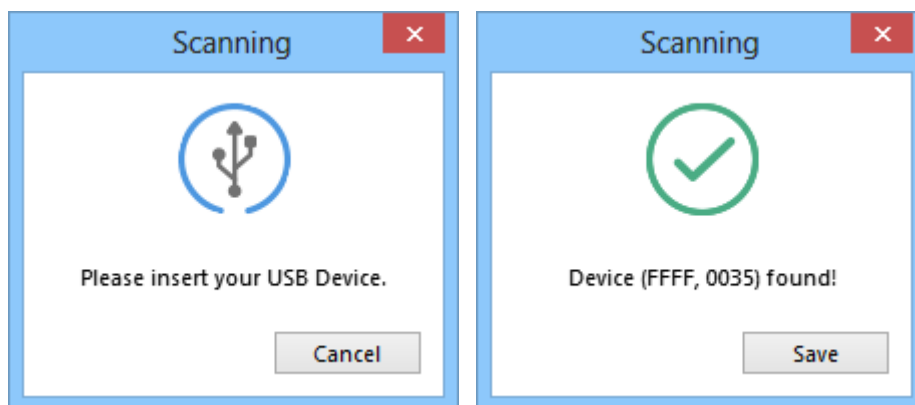
3. Modify the **[Device Name]**, it cannot be modified after confirmation.

Next click **[Scan USB Device]**.

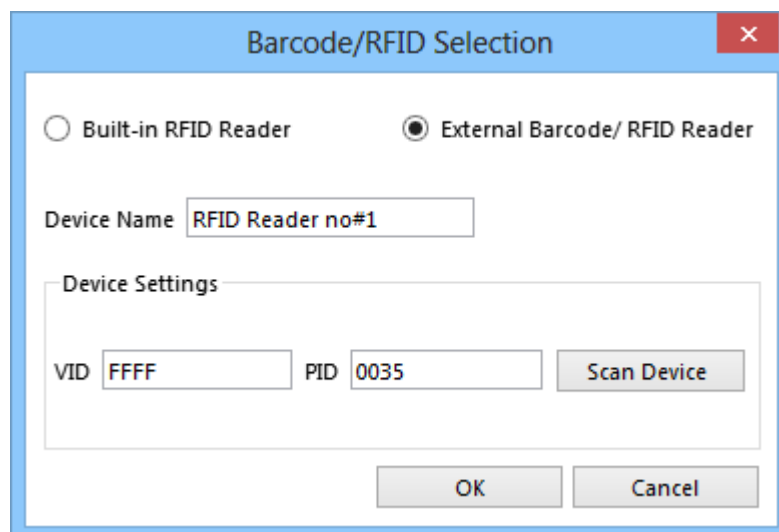


The dialog box is titled "Barcode/RFID Selection". It has two radio buttons: "Built-in RFID Reader" (unselected) and "External Barcode/ RFID Reader" (selected). Below them is a text field for "Device Name" containing "RFID Reader no#1". Under a "Device Settings" section, there are two text fields: "VID" with "0000" and "PID" with "0000". To the right of these fields is a "Scan Device" button. At the bottom are "OK" and "Cancel" buttons.

4. Insert the USB Device into the PC, scan the **[VID]** and **[PID]** of the device and click **[Save]** -> **[OK]**.

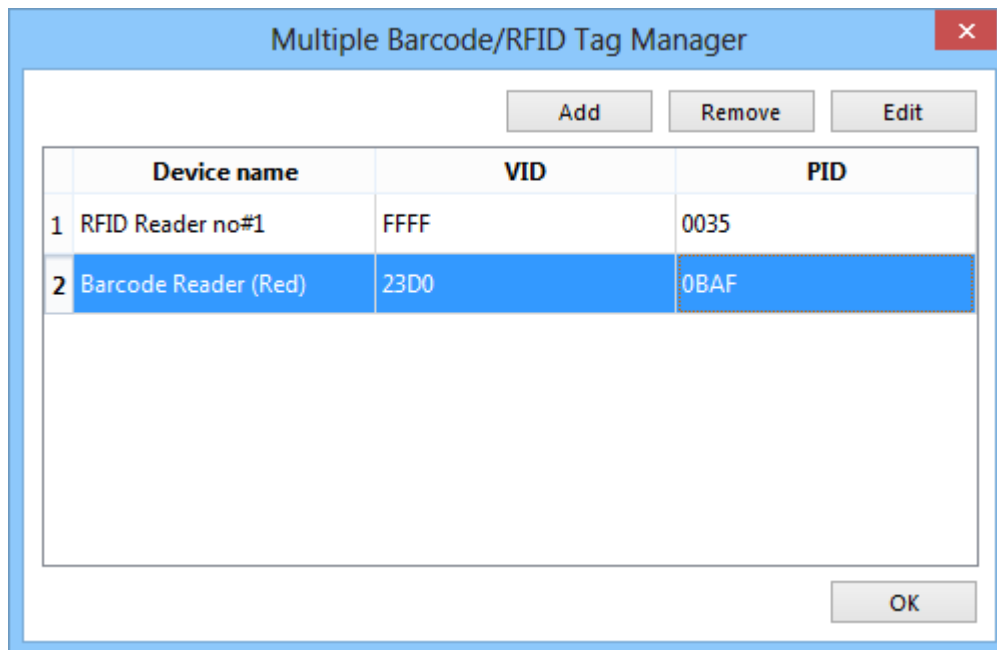


Two "Scanning" dialog boxes are shown side-by-side. The left one has a USB icon and the text "Please insert your USB Device." with a "Cancel" button. The right one has a green checkmark icon and the text "Device (FFFF, 0035) found!" with a "Save" button.



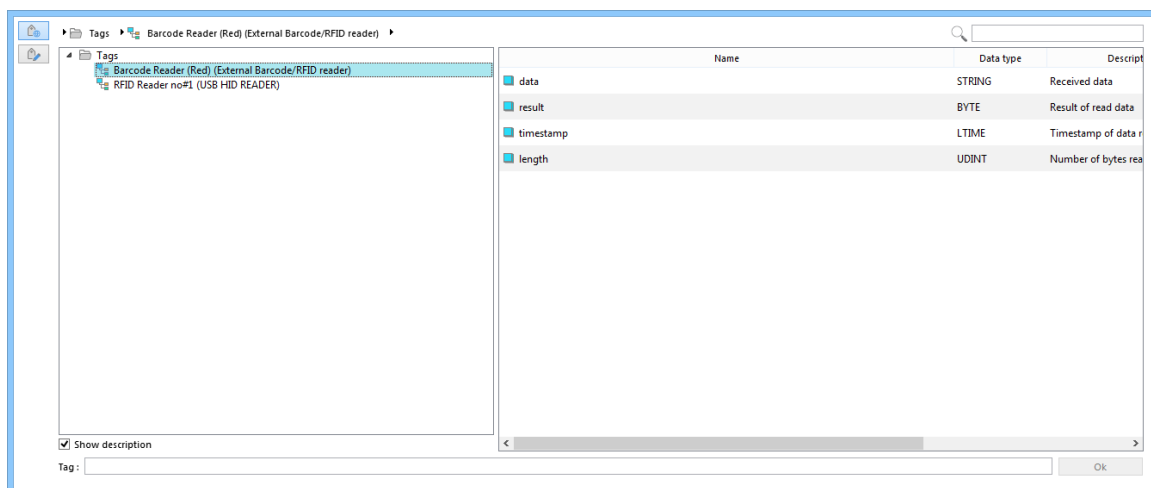
The "Barcode/RFID Selection" dialog box is shown again. The "External Barcode/ RFID Reader" radio button is selected. The "Device Name" field still contains "RFID Reader no#1". In the "Device Settings" section, the "VID" field now contains "FFFF" and the "PID" field contains "0035". The "Scan Device" button is still present. "OK" and "Cancel" buttons are at the bottom.

5. The user can see that the device has been displayed in the list. In this window, other usb devices can be added. Devices added to the list can also edit or delete settings.



Device Name, VID/PID, no duplicates allowed.

6. After adding the settings, the user can select the corresponding device address in the object.



DriverCapability:

Bit	Describe
Bit 0	The device supports the basic functions of the USB driver.
Bit 1	Device supports hot plug detection.

Status:

Status	Describe
0	The device is offline.
1	The device is online.

Read completed:

Status	Describe
0	Read not completed.
1	Read completed.

Reset:

Status	Describe
0	No action.
1	Reset data, length, read_completed, timestamp, result.

***Action when bit off -> on**

Result:

Status	Describe
0	Reading data.
1	Reading data completed.
2	Reading data format error.

Other Address Description:

Status	Describe
Length	Length of read data.
Timestamp	Timestamp for reading data.
Data	The content of the data read.