

Schleicher XCX 300/800

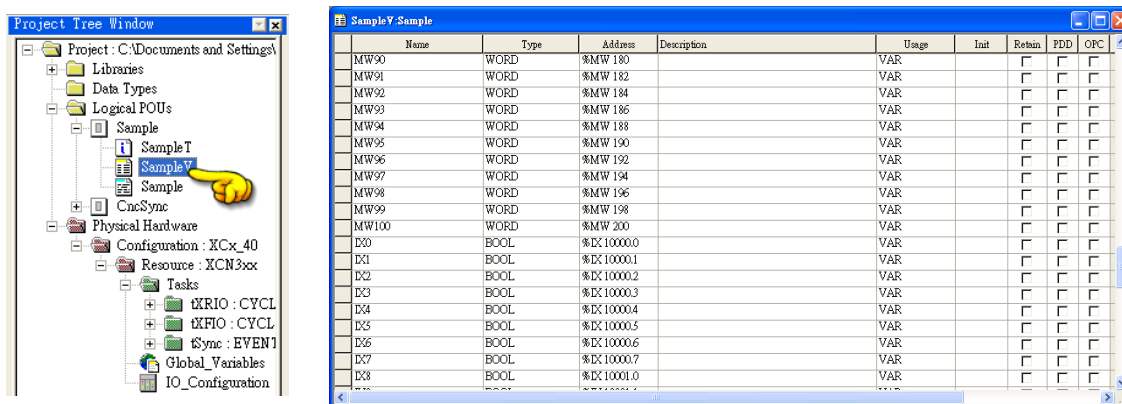
Website: <http://www.schleicher-electronic.com>

HMI Setting:

Parameters	Recommended	Options	Notes
PLC type	Schleicher XCX 300/800		
PLC I/F	Ethernet	RS232, RS422, Ethernet	
Port no.	20547		
Baud rate	9600		
Data bits	8		
Parity	Odd		
Stop bits	1		

PLC Setting:

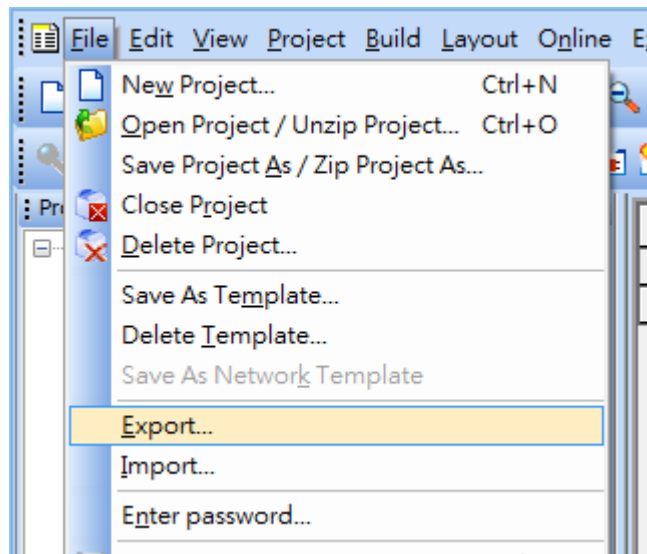
1. A variable must be created for HMI access.



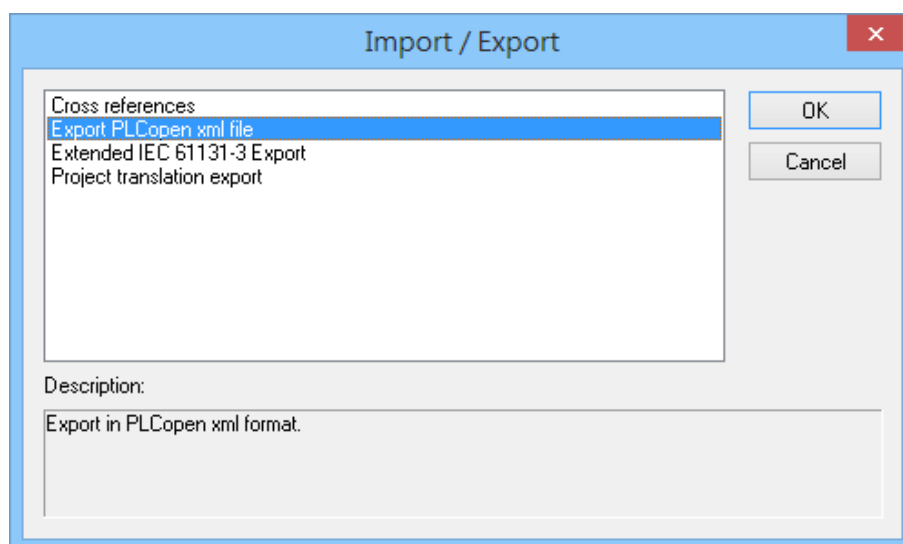
The image shows two screenshots from a software interface. The left screenshot is the 'Project Tree Window' showing a project structure with folders like Libraries, Data Types, Logical POU's, Sample, CncSync, Physical Hardware, Configuration: XCx_40, Resource: XCN3xx, Tasks, and Global Variables. A yellow arrow points to the 'Sample' folder. The right screenshot is a table titled 'SampleY-Sample' showing variable declarations.

Name	Type	Address	Description	Usage	Init	Return	PDI	OPC
MW90	WORD	%MW 180		VAR				
MW91	WORD	%MW 182		VAR				
MW92	WORD	%MW 184		VAR				
MW93	WORD	%MW 186		VAR				
MW94	WORD	%MW 188		VAR				
MW95	WORD	%MW 190		VAR				
MW96	WORD	%MW 192		VAR				
MW97	WORD	%MW 194		VAR				
MW98	WORD	%MW 196		VAR				
MW99	WORD	%MW 198		VAR				
MW100	WORD	%MW 200		VAR				
D0	BOOL	%IX 10000.0		VAR				
D1	BOOL	%IX 10000.1		VAR				
D2	BOOL	%IX 10000.2		VAR				
D3	BOOL	%IX 10000.3		VAR				
D4	BOOL	%IX 10000.4		VAR				
D5	BOOL	%IX 10000.5		VAR				
D6	BOOL	%IX 10000.6		VAR				
D7	BOOL	%IX 10000.7		VAR				
D8	BOOL	%IX 10001.0		VAR				

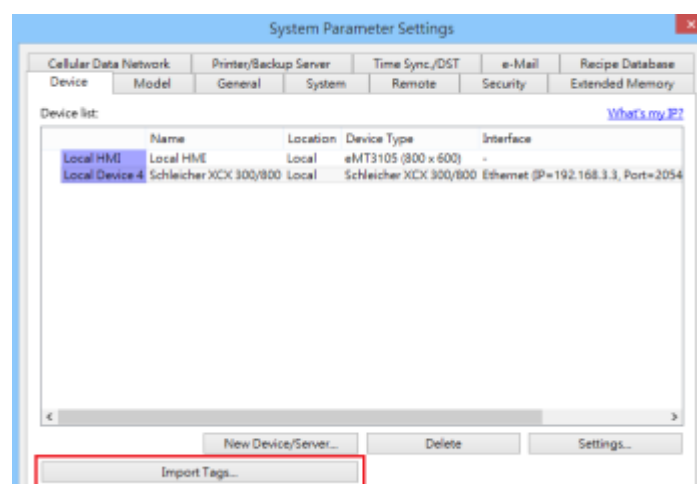
2. Export tag (Support global variables and POU variables)



3. Export PLCopen xml file -> OK



4. EasyBuilder Pro -> Import Tags



Device Address:

Bit/Word	Device type	Format	Range	Memo
B	IX	DDDDDo	0 ~ 655357	Input %IX
B	QX	DDDDDo	0 ~ 655357	Output %QX
B	MX	DDDDDDDDDo	0 ~ 518326727	%MX
W	IW_EVEN	DDDDD	0 ~ 65535	%IW (must be even)
W	QW_EVEN	DDDDD	0 ~ 65535	%QW (must be even)
W	MW_EVEN	DDDDDDDD	0 ~ 51832672	%MW (must be even)
DW	ID_EVEN	DDDDD	0 ~ 65535	%ID (must be even)
DW	QD_EVEN	DDDDD	0 ~ 65535	%QD (must be even)
DW	MD_EVEN	DDDDDDDD	0 ~ 51832672	%WD (must be even)
Byte	IB	DDDDD	0 ~ 65535	
Byte	QB	DDDDD	0 ~ 65535	
Byte	MB	DDDDDDDD	0 ~ 51832672	
W	IW	DDDDD	0 ~ 65535	%IW
W	QW	DDDDD	0 ~ 65535	%QW
W	MW	DDDDDDDD	0 ~ 51832672	%MW
DW	ID	DDDDD	0 ~ 65535	%ID
DW	QD	DDDDD	0 ~ 65535	%QD
DW	MD	DDDDDDDD	0 ~ 51832672	%WD
W	STRING	DDDDDDDD	0 ~ 51832672	

- Word address must be even.

Wiring Diagram:

Diagram 1

RS-232 (Schleicher XCX300 RS232 Port)

The serial port pin assignments may vary between HMI models, please click the following link for more information.

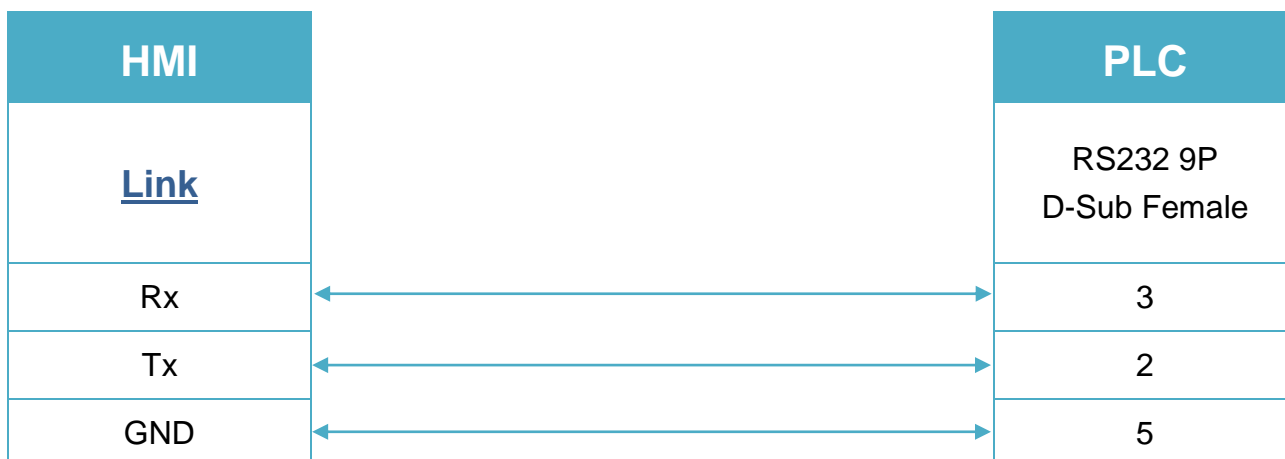


Diagram 2

RS-485 4W (Schleicher XCX300 RS485 4W Terminal)

The serial port pin assignments may vary between HMI models, please click the following link for more information.

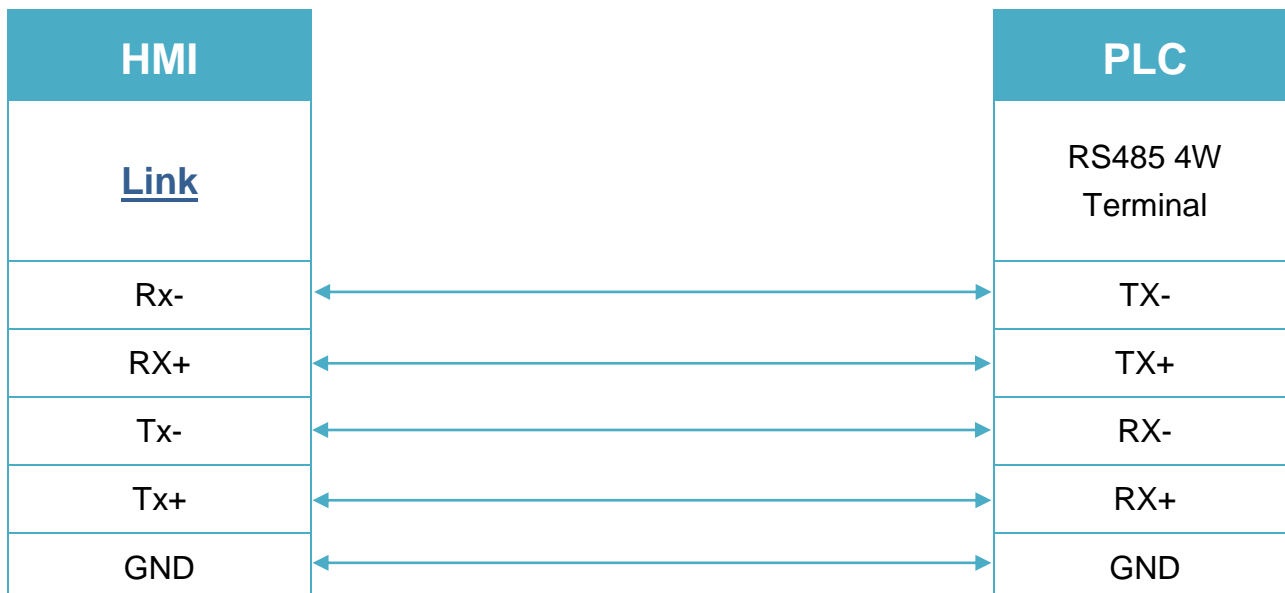


Diagram 3

Ethernet cable:

